



## UK Office

### Everest Biotech Ltd

Cherwell Innovation Centre  
77 Heyford Park  
Upper Heyford  
Oxfordshire  
OX25 5HD  
UK

Enquiries:

[info@everestbiotech.com](mailto:info@everestbiotech.com)

Sales:

[sales@everestbiotech.com](mailto:sales@everestbiotech.com)

Tech support:

[support@everestbiotech.com](mailto:support@everestbiotech.com)

Tel: +44 (0)1869 238326

[www.everestbiotech.com](http://www.everestbiotech.com)

**Research Use Only. Not for  
diagnostic or therapeutic use.**

## EB10698 - Goat Anti-IRF2BP1 (aa461-474) Antibody

Size: 100µg specific antibody in 200µl



### Target Protein

**Principal Names:** IRF2BP1, interferon regulatory factor 2 binding protein 1, DKFZp434M154

**Official Symbol:** IRF2BP1

**Accession Number(s):** NP\_056464.1

**Human GeneID(s):** [26145](#)

### Immunogen

Peptide with sequence C-QPPTQHRLVARNGE, from the internal region of the protein sequence according to NP\_056464.1.

Please note the [peptide](#) is available for sale.

### Purification and Storage

Purified from goat serum by ammonium sulphate precipitation followed by antigen affinity chromatography using the immunizing peptide.

Supplied at 0.5 mg/ml in Tris saline, 0.02% sodium azide, pH7.3 with 0.5% bovine serum albumin.

Aliquot and store at -20°C. Minimize freezing and thawing.

### Applications Tested

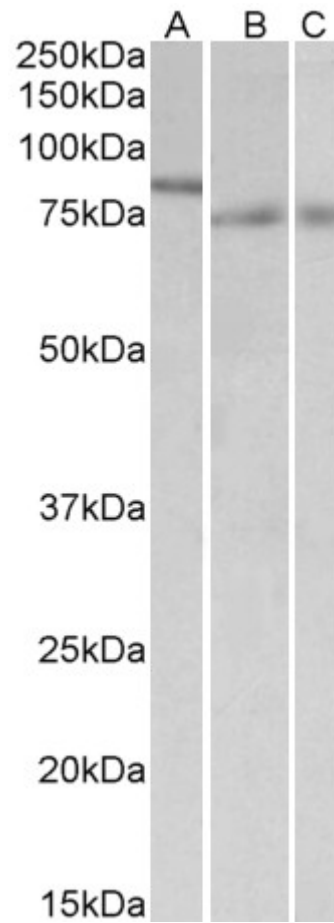
**Peptide ELISA:** antibody detection limit dilution 1:16000.

**Western blot:** Approx 60kDa band observed in Human Liver lysates (calculated MW of 61.7kDa according to NP\_056464.1). An approx 85kDa band observed in nuclear lysates of cell line NIH3T3 and 75kDa in Mouse and Rat Colon lysates. This molecular weight is routinely observed by other sources. Recommended concentration: 0.3-1µg/ml.

### Species Reactivity

**Tested:** Human, Mouse, Rat

**Expected from sequence similarity:** Human, Mouse, Rat, Dog, Pig, Cow



EB10698 (1 $\mu$ g/ml) staining of nuclear NIH3T3 lysate (A) and of Mouse (B) and Rat (C) Colon lysates (35 $\mu$ g protein in RIPA buffer). Primary incubation was 1 hour. Detected by chemiluminescence.



EB10698 (0.5 $\mu$ g/ml) staining of Human Liver lysate (35 $\mu$ g protein in RIPA buffer). Primary incubation was 1 hour. Detected by chemiluminescence.