



UK Office

Everest Biotech Ltd

Cherwell Innovation Centre
77 Heyford Park
Upper Heyford
Oxfordshire
OX25 5HD
UK

Enquiries:

info@everestbiotech.com

Sales:

sales@everestbiotech.com

Tech support:

support@everestbiotech.com

Tel: +44 (0)1869 238326

Fax: +44 (0)1869 238327

US Office

Everest Biotech c/o Abcore

405 Maple Street, Suite A106
Ramona,
CA 92065
USA

Inquiries:

info@everestbiotech.com

Sales:

usasales@everestbiotech.com

Tech support:

support@everestbiotech.com

Tel: 888-320-4628 (toll-free)

Fax: 888-841-9041

www.everestbiotech.com

**Research Use Only. Not for
diagnostic or therapeutic use.**

EB11330 - Goat Anti-IRF4 Antibody

Size: 100µg specific antibody in 200µl



Target Protein

Principal Names: interferon regulatory factor 4, LSIRF, multiple myeloma oncogene 1, MUM1, IRF4

Official Symbol: IRF4

Accession Number(s): NP_002451.2

Human GeneID(s): [3662](#)

Immunogen

Peptide with sequence C-HISNPEDYHRSIR, from the C Terminus of the protein sequence according to NP_002451.2.

Please note the [peptide](#) is available for sale.

Purification and Storage

Purified from goat serum by ammonium sulphate precipitation followed by antigen affinity chromatography using the immunizing peptide.

Supplied at 0.5 mg/ml in Tris saline, 0.02% sodium azide, pH7.3 with 0.5% bovine serum albumin.

Aliquot and store at -20°C. Minimize freezing and thawing.

Applications Tested

Peptide ELISA: antibody detection limit dilution 1:64000.

Western blot: Approx 48kDa band observed in lysates of cell lines Daudi and Jurkat and approx, 48-50kDa in lysates of cell line NIH3T3 (calculated MW of 51.8kDa according to Human NP_002451.2 and 51.4kDa according to Mouse NP_001334437.1).

Recommended concentration: 0.5-2µg/ml. Primary incubation 1 hour at room temperature.

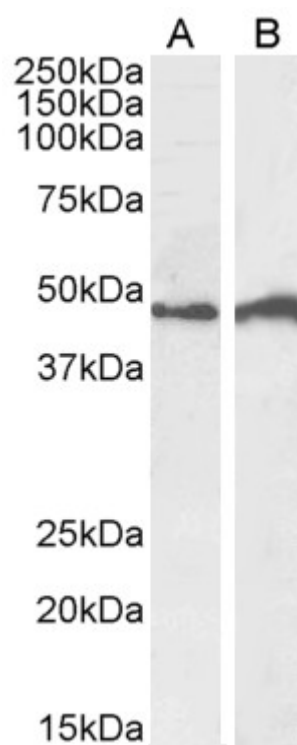
Species Reactivity

Tested: Human, Mouse

Expected from sequence similarity: Human



EB11330 (0.5µg/ml) staining of NIH3T3 cell lysate (35µg protein in RIPA buffer). Detected by chemiluminescence.



EB11330 (0.5µg/ml) staining of Daudi (A) and Jurkat (B) cell lysate (35µg protein in RIPA buffer). Detected by chemiluminescence.