



## UK Office

### Everest Biotech Ltd

Cherwell Innovation Centre  
77 Heyford Park  
Upper Heyford  
Oxfordshire  
OX25 5HD  
UK

Enquiries:

[info@everestbiotech.com](mailto:info@everestbiotech.com)

Sales:

[sales@everestbiotech.com](mailto:sales@everestbiotech.com)

Tech support:

[support@everestbiotech.com](mailto:support@everestbiotech.com)

Tel: +44 (0)1869 238326

Fax: +44 (0)1869 238327

## US Office

### Everest Biotech c/o Abcore

405 Maple Street, Suite A106  
Ramona,  
CA 92065  
USA

Inquiries:

[info@everestbiotech.com](mailto:info@everestbiotech.com)

Sales:

[usasales@everestbiotech.com](mailto:usasales@everestbiotech.com)

Tech support:

[support@everestbiotech.com](mailto:support@everestbiotech.com)

Tel: 888-320-4628 (toll-free)

Fax: 888-841-9041

[www.everestbiotech.com](http://www.everestbiotech.com)

**Research Use Only. Not for  
diagnostic or therapeutic use.**

## EB05585-T - Goat Anti-IRF5 Antibody - Trial

Size: 20µg specific antibody in 40µl



### Target Protein

**Principal Names:** IRF5, interferon regulatory factor 5, SLEB10

**Official Symbol:** IRF5

**Accession Number(s):** NP\_116032.1; NP\_001092097.2; NP\_001092099.1

**Human GeneID(s):** [3663](#)

**Important Comments:** This antibody is expected to recognize reported isoforms (NP\_116032.1; NP\_001092097.2 ; NP\_001092099.1

### Immunogen

Peptide with sequence C-QGPWPMHPAGMQ, from the C Terminus of the protein sequence according to NP\_116032.1; NP\_001092097.2; NP\_001092099.1.

Please note the [peptide](#) is available for sale.

### Purification and Storage

Purified from goat serum by ammonium sulphate precipitation followed by antigen affinity chromatography using the immunizing peptide.

Supplied at 0.5 mg/ml in Tris saline, 0.02% sodium azide, pH7.3 with 0.5% bovine serum albumin.

Aliquot and store at -20°C. Minimize freezing and thawing.

### Applications Tested

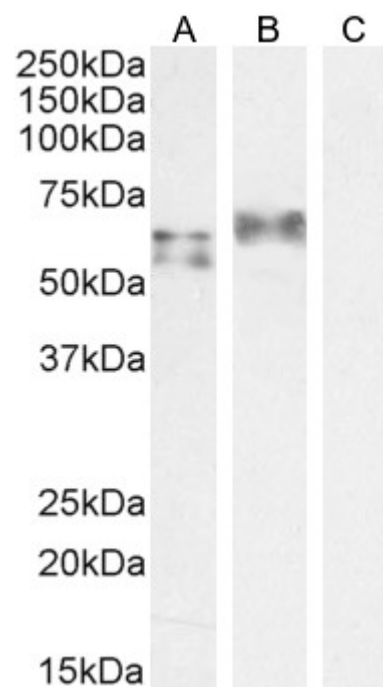
**Peptide ELISA:** antibody detection limit dilution 1:128000.

**Western blot:** Approx 55+60kDa bands observed in Human Spleen lysates and approx 65kDa in lysates of cell line A549 (calculated MW of 57.8kDa according to NP\_001092099.1 and 56.0kDa according to NP\_116032.1; NP\_001092097.2).  
Recommended concentration: 0.3-1µg/ml. Primary incubation 1 hour at room temperature.

### Species Reactivity

**Tested:** Human

**Expected from sequence similarity:** Human, Mouse, Rat, Cow



EB05585 staining (1 $\mu$ g/ml) Human Spleen (A) and A549 cell lysate (B) + peptide (C). (35 $\mu$ g protein in RIPA buffer). Detected by chemiluminescence