



UK Office

Everest Biotech Ltd

Cherwell Innovation Centre
77 Heyford Park
Upper Heyford
Oxfordshire
OX25 5HD
UK

Enquiries:

info@everestbiotech.com

Sales:

sales@everestbiotech.com

Tech support:

support@everestbiotech.com

Tel: +44 (0)1869 238326

www.everestbiotech.com

**Research Use Only. Not for
diagnostic or therapeutic use.**

EB07645 - Goat Anti-ITCH / AIF4 Antibody

Size: 100µg specific antibody in 200µl



Target Protein

Principal Names: ITCH, AIF4, itchy homolog E3 ubiquitin protein ligase (mouse), AIP4, NAPP1, dJ468O1.1, NFE2-associated polypeptide 1, atrophin-1 interacting protein 4, dJ468O1.1 (atrophin 1 interacting protein 4, AIP4), itchy homolog E3 ubiquitin protein ligase, ubiquitin protein ligase ITCH

Official Symbol: ITCH

Accession Number(s): NP_113671.3; NP_001244066.1; NP_001244067.1

Human GeneID(s): [83737](#)

Non-Human GeneID(s): 16396 (mouse), 311567 (rat)

Immunogen

Peptide with sequence C-EIKSHDLKPNGGN, from the internal region of the protein sequence according to NP_113671.3; NP_001244066.1; NP_001244067.1.

Please note the [peptide](#) is available for sale.

Purification and Storage

Purified from goat serum by ammonium sulphate precipitation followed by antigen affinity chromatography using the immunizing peptide.

Supplied at 0.5 mg/ml in Tris saline, 0.02% sodium azide, pH7.3 with 0.5% bovine serum albumin.

Aliquot and store at -20°C. Minimize freezing and thawing.

Applications Tested

Peptide ELISA: antibody detection limit dilution 1:16000.

Western blot: Approx 90kDa band observed in Human Brain (Frontal Cortex) lysates (calculated MW of 86.4kDa according to NP_001244067.1) . Recommended concentration: 0.1-0.3µg/ml. Primary incubation 1 hour at room temperature.

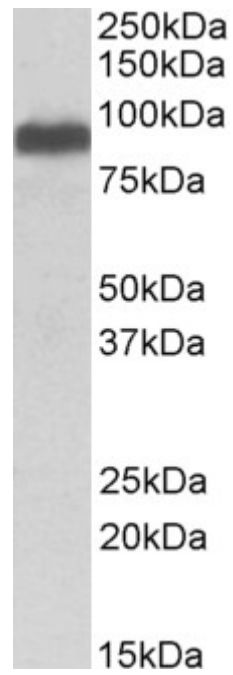
Immunofluorescence: Strong expression of the protein seen in the nuclei of A431 and U2OS cells. Recommended concentration: 10µg/ml.

Flow Cytometry: Flow cytometric analysis of HeLa cells. Recommended concentration: 10ug/ml.

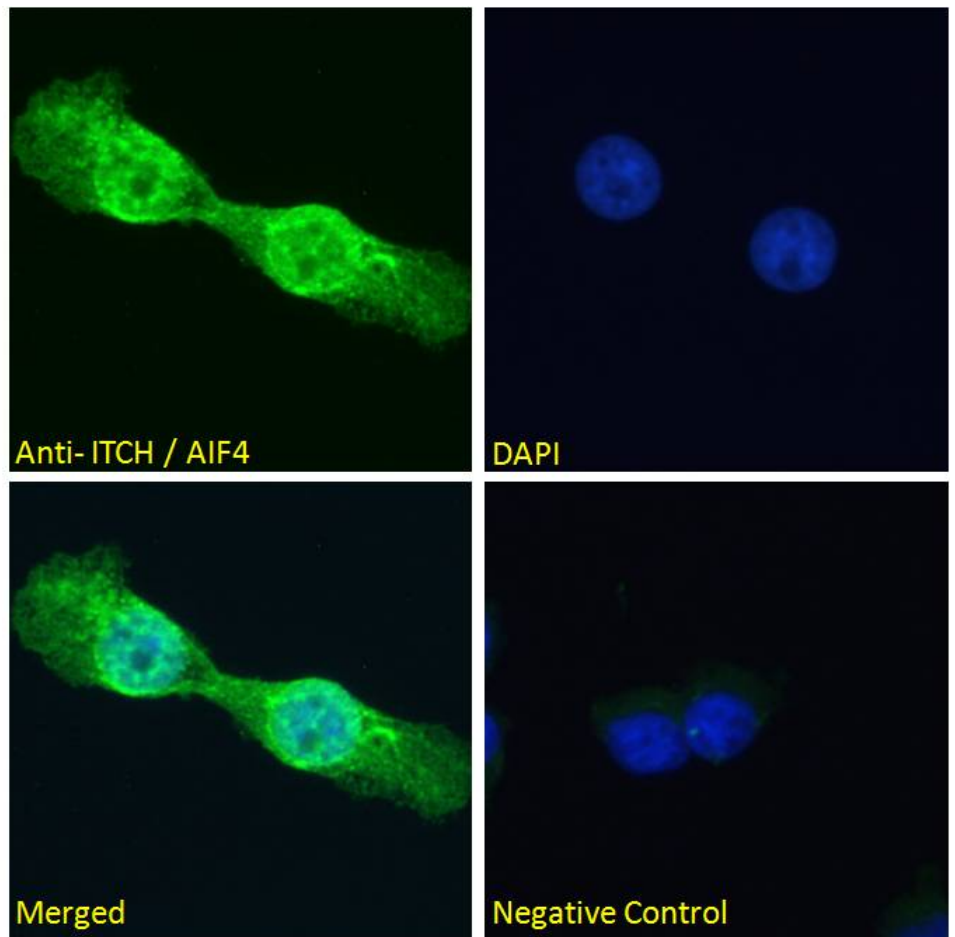
Species Reactivity

Tested: Human

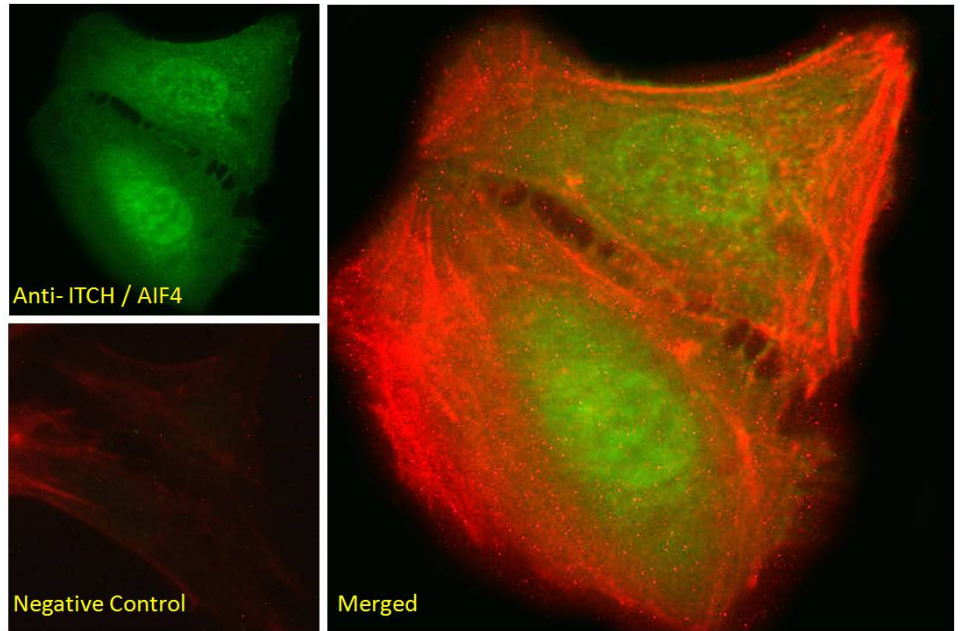
Expected from sequence similarity: Human, Mouse, Rat, Dog, Cow



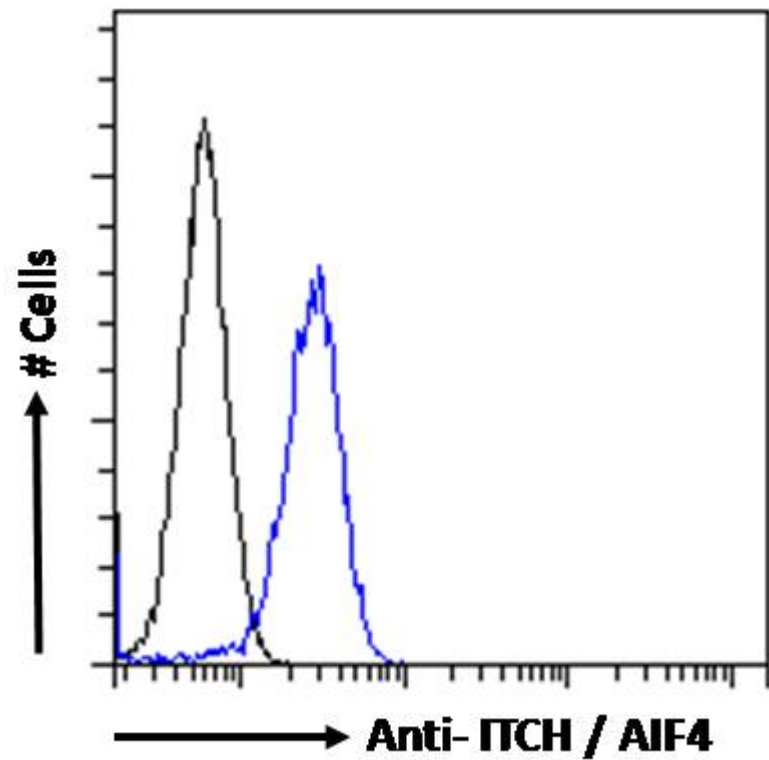
EB07645 (0.1 μ g/ml) staining of Human Brain (Frontal Cortex) lysate (35 μ g protein in RIPA buffer). Detected by chemiluminescence.



EB07645 Immunofluorescence analysis of paraformaldehyde fixed A431 cells, permeabilized with 0.15% Triton. Primary incubation 1hr (10 μ g/ml) followed by Alexa Fluor 488 secondary antibody (2 μ g/ml), showing nuclear and vesicle staining. The nuclear stain is DAPI (blue). Negative control: Unimmunized goat IgG (10 μ g/ml) followed by Alexa Fluor 488 secondary antibody (2 μ g/ml).



EB07645 Immunofluorescence analysis of paraformaldehyde fixed U2OS cells, permeabilized with 0.15% Triton. Primary incubation 1hr (10ug/ml) followed by Alexa Fluor 488 secondary antibody (2ug/ml), showing nuclear staining. Actin filaments were stained with phalloidin (red). Negative control: Unimmunized goat IgG (10ug/ml) followed by Alexa Fluor 488 secondary antibody (2ug/ml).



EB07645 Flow cytometric analysis of paraformaldehyde fixed HeLa cells (blue line), permeabilized with 0.5% Triton. Primary incubation 1hr (10ug/ml) followed by Alexa Fluor 488 secondary antibody (1ug/ml). IgG control: Unimmunized goat IgG (black line) followed by Alexa Fluor 488 secondary antibody.