

UK Office

Everest Biotech Ltd

Cherwell Innovation Centre
77 Heyford Park
Upper Heyford
Oxfordshire
OX25 5HD
UK

Enquiries:

info@everestbiotech.com

Sales:

sales@everestbiotech.com

Tech support:

support@everestbiotech.com

Tel: +44 (0)1869 238326

www.everestbiotech.com

**Research Use Only. Not for
diagnostic or therapeutic use.**

EB08199 - Goat Anti-ITGB1 / CD29 Antibody

Size: 100µg specific antibody in 200µl



Target Protein

Principal Names: ITGB1, integrin, beta 1 (fibronectin receptor, beta polypeptide, antigen CD29 includes MDF2, MSK12), CD29, FN1R, GPIIb, MDF2, MSK12, VLAB, OTTHUMP00000046253, OTTHUMP00000063731, OTTHUMP00000063732, OTTHUMP00000063733, fibronectin receptor beta subunit, i

Official Symbol: ITGB1

Accession Number(s): NP_596867.1; NP_002202.2; NP_389647.1; NP_391987.1; NP_391989.1; NP_391988.1

Human GeneID(s): [3688](#)

Important Comments: This antibody is expected to recognize all reported isoforms (NP_596867.1; NP_002202.2; NP_389647.1; NP_391987.1; NP_391989.1; NP_391988.1)

Immunogen

Peptide with sequence NKCPKKDSDSKIRP, from the Internal region of the protein sequence according to NP_596867.1; NP_002202.2; NP_389647.1; NP_391987.1; NP_391989.1; NP_391988.1.

Please note the [peptide](#) is available for sale.

Purification and Storage

Purified from goat serum by ammonium sulphate precipitation followed by antigen affinity chromatography using the immunizing peptide.

Supplied at 0.5 mg/ml in Tris saline, 0.02% sodium azide, pH7.3 with 0.5% bovine serum albumin.

Aliquot and store at -20°C. Minimize freezing and thawing.

Applications Tested

Peptide ELISA: antibody detection limit dilution 1:128000.

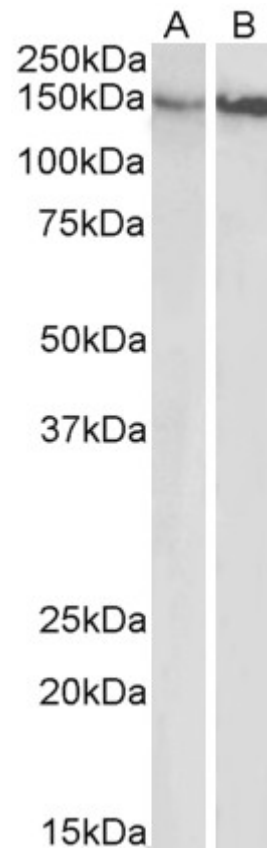
Western blot: Approx 150kDa band observed in Human Gastrointestinal cancer and Gall Bladder cancer lysates (calculated MW of 88.4kDa according to 596867.1).

Recommended concentration: 0.3-1µg/ml.

Species Reactivity

Tested: Human

Expected from sequence similarity: Human



EB08199 (0.5 μ g/ml) staining of Gastrointestinal cancer (A) and Gall Bladder cancer (B) lysates (35 μ g protein in RIPA buffer). Primary incubation was 1 hour. Detected by chemiluminescence.