



## UK Office

### Everest Biotech Ltd

Cherwell Innovation Centre  
77 Heyford Park  
Upper Heyford  
Oxfordshire  
OX25 5HD  
UK

Enquiries:

[info@everestbiotech.com](mailto:info@everestbiotech.com)

Sales:

[sales@everestbiotech.com](mailto:sales@everestbiotech.com)

Tech support:

[support@everestbiotech.com](mailto:support@everestbiotech.com)

Tel: +44 (0)1869 238326

Fax: +44 (0)1869 238327

## US Office

### Everest Biotech c/o Abcore

405 Maple Street, Suite A106  
Ramona,  
CA 92065  
USA

Inquiries:

[info@everestbiotech.com](mailto:info@everestbiotech.com)

Sales:

[usasales@everestbiotech.com](mailto:usasales@everestbiotech.com)

Tech support:

[support@everestbiotech.com](mailto:support@everestbiotech.com)

Tel: 888-320-4628 (toll-free)

Fax: 888-841-9041

[www.everestbiotech.com](http://www.everestbiotech.com)

**Research Use Only. Not for  
diagnostic or therapeutic use.**

## EB08199 - Goat Anti-ITGB1 / CD29 Antibody

Size: 100µg specific antibody in 200µl



### Target Protein

**Principal Names:** ITGB1, integrin, beta 1 (fibronectin receptor, beta polypeptide, antigen CD29 includes MDF2, MSK12), CD29, FNBR, GPIIA, MDF2, MSK12, VLAB, OTTHUMP00000046253, OTTHUMP00000063731, OTTHUMP00000063732, OTTHUMP00000063733, fibronectin receptor beta subunit, i

**Official Symbol:** ITGB1

**Accession Number(s):** NP\_596867.1; NP\_002202.2; NP\_389647.1; NP\_391987.1; NP\_391989.1; NP\_391988.1

**Human GeneID(s):** [3688](#)

**Important Comments:** This antibody is expected to recognize all reported isoforms (NP\_596867.1; NP\_002202.2; NP\_389647.1; NP\_391987.1; NP\_391989.1; NP\_391988.1)

### Immunogen

Peptide with sequence NKCPKKDSDFKIRP, from the Internal region of the protein sequence according to NP\_596867.1; NP\_002202.2; NP\_389647.1; NP\_391987.1; NP\_391989.1; NP\_391988.1.

Please note the [peptide](#) is available for sale.

### Purification and Storage

Purified from goat serum by ammonium sulphate precipitation followed by antigen affinity chromatography using the immunizing peptide.

Supplied at 0.5 mg/ml in Tris saline, 0.02% sodium azide, pH7.3 with 0.5% bovine serum albumin.

Aliquot and store at -20°C. Minimize freezing and thawing.

### Applications Tested

**Peptide ELISA:** antibody detection limit dilution 1:128000.

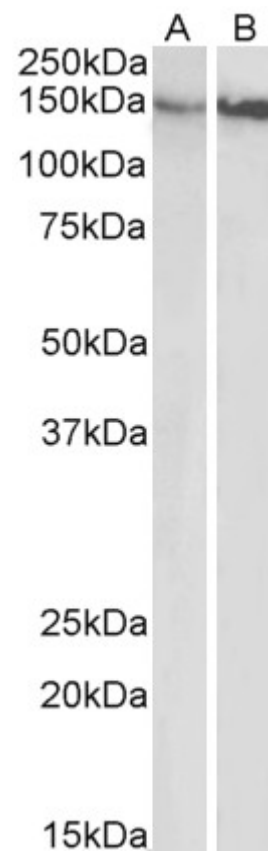
**Western blot:** Approx 150kDa band observed in Human Gastrointestinal cancer and Gall Bladder cancer lysates (calculated MW of 88.4kDa according to 596867.1).

Recommended concentration: 0.3-1µg/ml.

### Species Reactivity

**Tested:** Human

**Expected from sequence similarity:** Human



EB08199 (0.5µg/ml) staining of Gastrointestinal cancer (A) and Gall Bladder cancer (B) lysates (35µg protein in RIPA buffer). Primary incubation was 1 hour. Detected by chemiluminescence.