



UK Office

Everest Biotech Ltd

Cherwell Innovation Centre
77 Heyford Park
Upper Heyford
Oxfordshire
OX25 5HD
UK

Enquiries:

info@everestbiotech.com

Sales:

sales@everestbiotech.com

Tech support:

support@everestbiotech.com

Tel: +44 (0)1869 238326

www.everestbiotech.com

**Research Use Only. Not for
diagnostic or therapeutic use.**

EB12559 - Goat Anti-ITGB2 / LFA-1 (aa86-99) Antibody

Size: 100µg specific antibody in 200µl



Target Protein

Principal Names: ITGB2, integrin, beta 2 (complement component 3 receptor 3 and 4 subunit), CD18, LAD, LCAMB, LFA-1, MAC-1, MF17, MFI7, cell surface adhesion glycoprotein LFA-1/CR3/P150,959 beta subunit precursor), cell surface adhesion glycoproteins LFA-1/CR3/p150,95 sub

Official Symbol: ITGB2

Accession Number(s): NP_000202.2

Human GeneID(s): [3689](#)

Important Comments: Reported variants represent identical protein: NP_001120963.1, NP_000202.2.

Immunogen

Peptide with sequence C-ETQEDHNGGQKQLS, from the internal region of the protein sequence according to NP_000202.2.

Please note the [peptide](#) is available for sale.

Purification and Storage

Purified from goat serum by ammonium sulphate precipitation followed by antigen affinity chromatography using the immunizing peptide.

Supplied at 0.5 mg/ml in Tris saline, 0.02% sodium azide, pH7.3 with 0.5% bovine serum albumin.

Aliquot and store at -20°C. Minimize freezing and thawing.

Applications Tested

Peptide ELISA: antibody detection limit dilution 1:128000.

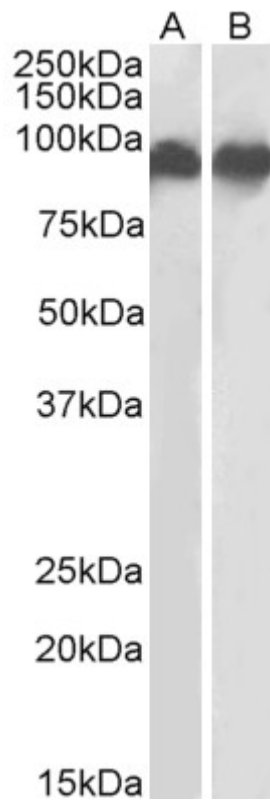
Western blot: Approx 90kDa band observed in lysates of cell lines K562 and U937 (calculated MW of 84.8kDa according to NP_000202.2). Recommended concentration: 0.3-1µg/ml. Primary incubation was 1 hour.

IHC: Paraffin embedded Human Spleen. Recommended concentration: 5µg/ml.

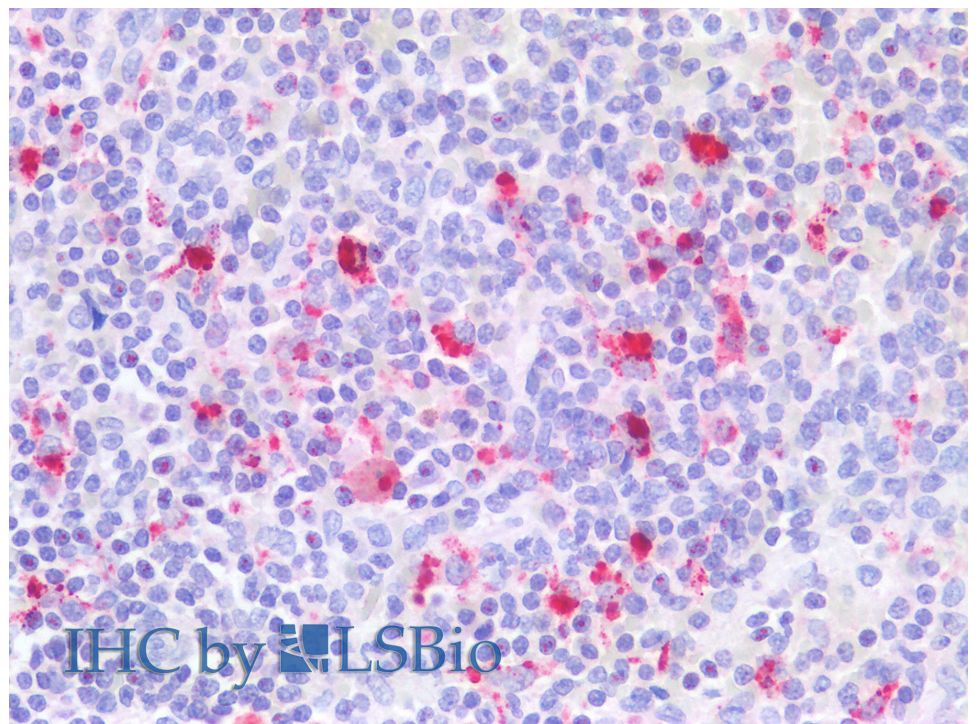
Species Reactivity

Tested: Human

Expected from sequence similarity: Human



EB12559 (0.3 μ g/ml) staining of K562 (A) and U937 (B) lysates (35 μ g protein in RIPA buffer). Detected by chemiluminescence.



EB12559 (5 μ g/ml) staining of paraffin embedded Human Spleen. Steamed antigen retrieval with citrate buffer pH 6, AP-staining.