



## UK Office

### Everest Biotech Ltd

Cherwell Innovation Centre  
77 Heyford Park  
Upper Heyford  
Oxfordshire  
OX25 5HD  
UK

Enquiries:

[info@everestbiotech.com](mailto:info@everestbiotech.com)

Sales:

[sales@everestbiotech.com](mailto:sales@everestbiotech.com)

Tech support:

[support@everestbiotech.com](mailto:support@everestbiotech.com)

Tel: +44 (0)1869 238326

Fax: +44 (0)1869 238327

## US Office

### Everest Biotech c/o Abcore

405 Maple Street, Suite A106  
Ramona,  
CA 92065  
USA

Inquiries:

[info@everestbiotech.com](mailto:info@everestbiotech.com)

Sales:

[usasales@everestbiotech.com](mailto:usasales@everestbiotech.com)

Tech support:

[support@everestbiotech.com](mailto:support@everestbiotech.com)

Tel: 888-320-4628 (toll-free)

Fax: 888-841-9041

[www.everestbiotech.com](http://www.everestbiotech.com)

**Research Use Only. Not for  
diagnostic or therapeutic use.**

## EB12559 - Goat Anti-ITGB2 / LFA-1 (aa86-99) Antibody

Size: 100µg specific antibody in 200µl



### Target Protein

**Principal Names:** ITGB2, integrin, beta 2 (complement component 3 receptor 3 and 4 subunit), CD18, LAD, LCAMB, LFA-1, MAC-1, MF17, MFI7, cell surface adhesion glycoprotein LFA-1/CR3/P150,959 beta subunit precursor), cell surface adhesion glycoproteins LFA-1/CR3/p150,95 sub

**Official Symbol:** ITGB2

**Accession Number(s):** NP\_000202.2

**Human GeneID(s):** [3689](#)

**Important Comments:** Reported variants represent identical protein: NP\_001120963.1, NP\_000202.2.

### Immunogen

Peptide with sequence C-ETQEDHNGGQKQLS, from the internal region of the protein sequence according to NP\_000202.2.

Please note the [peptide](#) is available for sale.

### Purification and Storage

Purified from goat serum by ammonium sulphate precipitation followed by antigen affinity chromatography using the immunizing peptide.

Supplied at 0.5 mg/ml in Tris saline, 0.02% sodium azide, pH7.3 with 0.5% bovine serum albumin.

Aliquot and store at -20°C. Minimize freezing and thawing.

### Applications Tested

**Peptide ELISA:** antibody detection limit dilution 1:128000.

**Western blot:** Approx 90kDa band observed in lysates of cell lines K562 and U937 (calculated MW of 84.8kDa according to NP\_000202.2). Recommended concentration: 0.3-1µg/ml. Primary incubation was 1 hour.

**IHC:** Paraffin embedded Human Spleen. Recommended concentration: 5µg/ml.

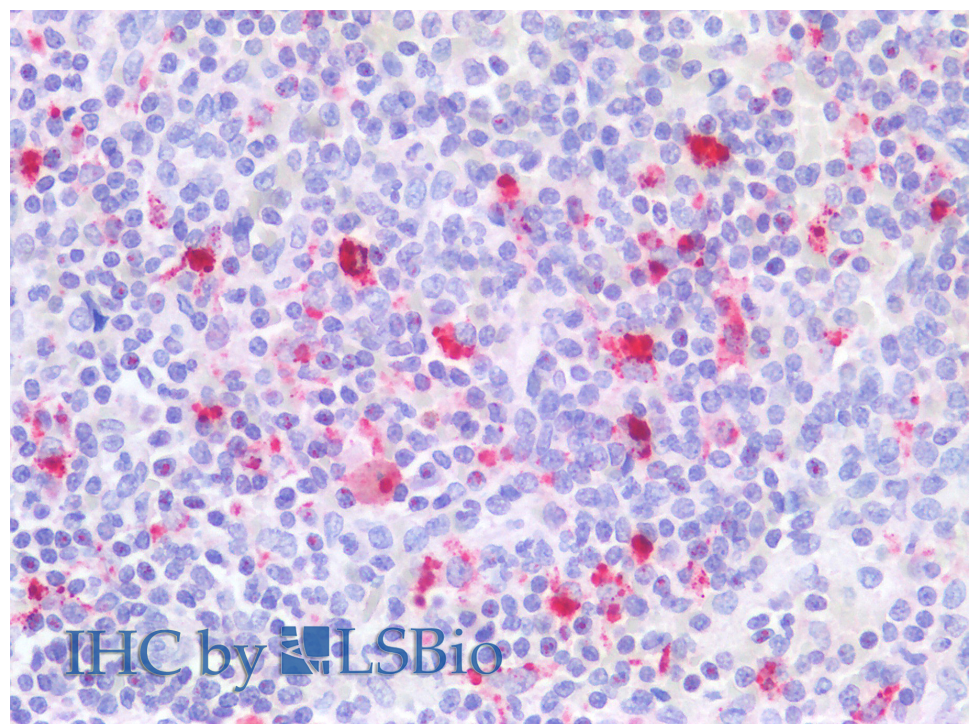
### Species Reactivity

**Tested:** Human

**Expected from sequence similarity:** Human



EB12559 (0.3µg/ml) staining of K562 (A) and U937 (B) lysates (35µg protein in RIPA buffer). Detected by chemiluminescence.



EB12559 (5µg/ml) staining of paraffin embedded Human Spleen. Steamed antigen retrieval with citrate buffer pH 6, AP-staining.