



## UK Office

### Everest Biotech Ltd

Cherwell Innovation Centre  
77 Heyford Park  
Upper Heyford  
Oxfordshire  
OX25 5HD  
UK

Enquiries:

[info@everestbiotech.com](mailto:info@everestbiotech.com)

Sales:

[sales@everestbiotech.com](mailto:sales@everestbiotech.com)

Tech support:

[support@everestbiotech.com](mailto:support@everestbiotech.com)

Tel: +44 (0)1869 238326

Fax: +44 (0)1869 238327

## US Office

### Everest Biotech c/o Abcore

405 Maple Street, Suite A106  
Ramona,  
CA 92065  
USA

Inquiries:

[info@everestbiotech.com](mailto:info@everestbiotech.com)

Sales:

[usasales@everestbiotech.com](mailto:usasales@everestbiotech.com)

Tech support:

[support@everestbiotech.com](mailto:support@everestbiotech.com)

Tel: 888-320-4628 (toll-free)

Fax: 888-841-9041

[www.everestbiotech.com](http://www.everestbiotech.com)

**Research Use Only. Not for  
diagnostic or therapeutic use.**

## EB10921 - Goat Anti-ITIH4 (aa890-903) Antibody

Size: 100µg specific antibody in 200µl



### Target Protein

**Principal Names:** ITIH4, inter-alpha (globulin) inhibitor H4 (plasma Kallikrein-sensitive glycoprotein), DKFZp686G21125, H4P, IHRP, ITIHL1, PK120, ITI heavy chain H4, ITI-HC4, OTTHUMP00000213834, OTTHUMP00000213869, PK-120, gp120, inter-alpha-inhibitor

**Official Symbol:** ITIH4

**Accession Number(s):** NP\_002209.2; NP\_001159921.1

**Human GeneID(s):** [3700](#)

**Important Comments:** This antibody is expected to recognize both reported isoforms (NP\_002209.2; NP\_001159921.1).

### Immunogen

Peptide with sequence C-SDDGRRTLRLVQGND, from the C Terminus of the protein sequence according to NP\_002209.2; NP\_001159921.1.

Please note the [peptide](#) is available for sale.

### Purification and Storage

Purified from goat serum by ammonium sulphate precipitation followed by antigen affinity chromatography using the immunizing peptide.

Supplied at 0.5 mg/ml in Tris saline, 0.02% sodium azide, pH7.3 with 0.5% bovine serum albumin.

Aliquot and store at -20°C. Minimize freezing and thawing.

### Applications Tested

**Peptide ELISA:** antibody detection limit dilution 1:16000.

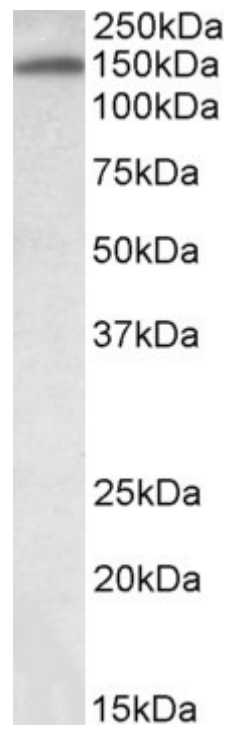
**Western blot:** Approx 150kDa band observed in Human Placenta lysates (calculated MW of 103kDa according to NP\_002209.2). The observed molecular weight corresponds to the glycosylated form. Recommended concentration: 0.03-0.1µg/ml. Primary incubation was 1 hour.

**IHC:** Paraffin embedded Human Testis (Leydig cells). Recommended concentration: 5µg/ml.

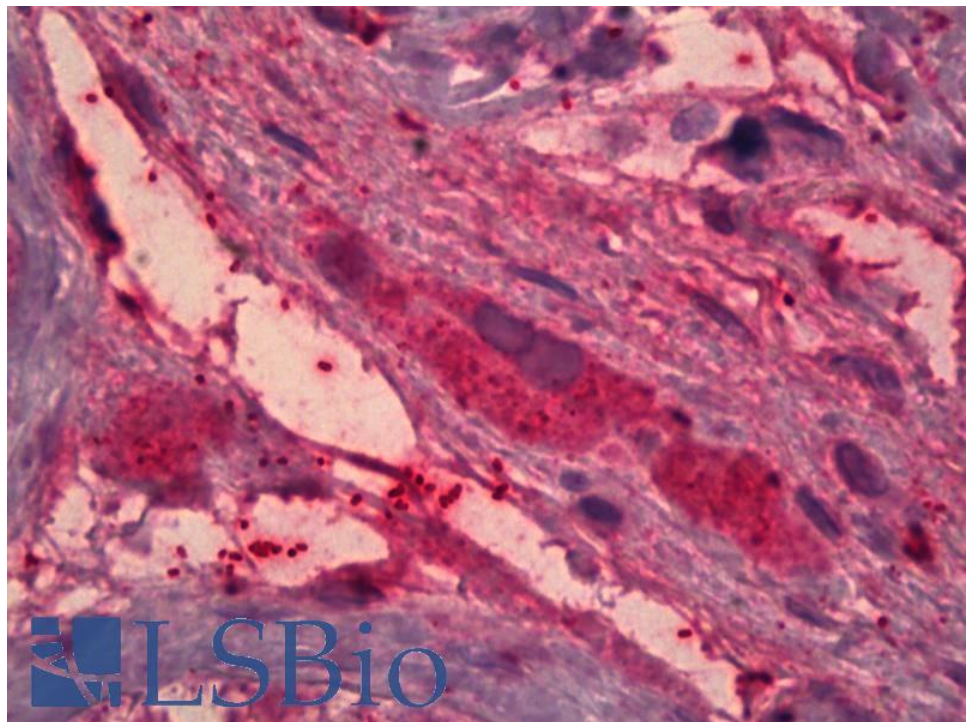
### Species Reactivity

**Tested:** Human

**Expected from sequence similarity:** Human



EB10921 (0.03 $\mu$ g/ml) staining of Human Placenta lysate (35 $\mu$ g protein in RIPA buffer). Detected by chemiluminescence.



EB10921 (5 $\mu$ g/ml) staining of paraffin embedded Human Testis. Steamed antigen retrieval with citrate buffer pH 6, AP-staining.