



UK Office

Everest Biotech Ltd

Cherwell Innovation Centre
77 Heyford Park
Upper Heyford
Oxfordshire
OX25 5HD
UK

Enquiries:

info@everestbiotech.com

Sales:

sales@everestbiotech.com

Tech support:

support@everestbiotech.com

Tel: +44 (0)1869 238326

Fax: +44 (0)1869 238327

US Office

Everest Biotech c/o Abcore

405 Maple Street, Suite A106
Ramona,
CA 92065
USA

Inquiries:

info@everestbiotech.com

Sales:

usasales@everestbiotech.com

Tech support:

support@everestbiotech.com

Tel: 888-320-4628 (toll-free)

Fax: 888-841-9041

www.everestbiotech.com

**Research Use Only. Not for
diagnostic or therapeutic use.**

EB09084 - Goat Anti-ITIH4 Antibody

Size: 100µg specific antibody in 200µl



Target Protein

Principal Names: ITIH4, inter-alpha (globulin) inhibitor H4 (plasma Kallikrein-sensitive glycoprotein), DKFZp686G21125, H4P, IHRP, ITIHL1, PK120, inter-alpha (globulin) inhibitor H4, plasma kallikrein-sensitive glycoprotein

Official Symbol: ITIH4

Accession Number(s): NP_002209.2

Human GeneID(s): [3700](#)

Important Comments: The immunizing peptide represents a region of the 35kDa chain. This chain is glycosylated giving rise to an apparent higher molecular weight.

Immunogen

Peptide with sequence ERLCVDPRHRQGPVN, from the internal region of the protein sequence according to NP_002209.2.

Please note the [peptide](#) is available for sale.

Purification and Storage

Purified from goat serum by ammonium sulphate precipitation followed by antigen affinity chromatography using the immunizing peptide.

Supplied at 0.5 mg/ml in Tris saline, 0.02% sodium azide, pH7.3 with 0.5% bovine serum albumin.

Aliquot and store at -20°C. Minimize freezing and thawing.

Applications Tested

Peptide ELISA: antibody detection limit dilution 1:16000.

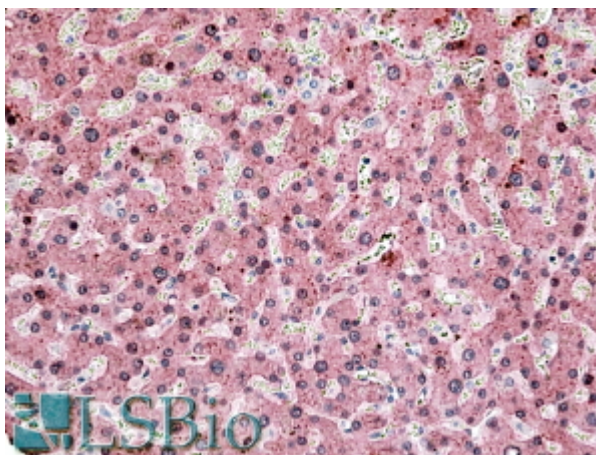
Western blot: Preliminary experiments gave an approx. 150kDa band in Human Liver and Lung lysates after 0.03µg/ml antibody staining. Please note that currently we cannot find an explanation in the literature for the band we observe given the calculated size of 103kDa according to NP_002209.2. The 150kDa band was successfully blocked by incubation with the immunizing peptide. We would appreciate any feedback from people in the field - have any results been reported with other antibodies/lysates? Have any further splice variants/modified forms been reported?

IHC: In paraffin embedded Human Liver shows vesicular staining in the cytoplasm of hepatocytes. Recommended concentration, 4-6µg/ml.

Species Reactivity

Tested: Human

Expected from sequence similarity: Human



EB09084 (3.8µg/ml) staining of paraffin embedded Human Liver. Steamed antigen retrieval with citrate buffer pH 6, AP-staining.