



## UK Office

### Everest Biotech Ltd

Cherwell Innovation Centre  
77 Heyford Park  
Upper Heyford  
Oxfordshire  
OX25 5HD  
UK

Enquiries:

[info@everestbiotech.com](mailto:info@everestbiotech.com)

Sales:

[sales@everestbiotech.com](mailto:sales@everestbiotech.com)

Tech support:

[support@everestbiotech.com](mailto:support@everestbiotech.com)

Tel: +44 (0)1869 238326

Fax: +44 (0)1869 238327

## US Office

### Everest Biotech c/o Abcore

405 Maple Street, Suite A106  
Ramona,  
CA 92065  
USA

Inquiries:

[info@everestbiotech.com](mailto:info@everestbiotech.com)

Sales:

[usasales@everestbiotech.com](mailto:usasales@everestbiotech.com)

Tech support:

[support@everestbiotech.com](mailto:support@everestbiotech.com)

Tel: 888-320-4628 (toll-free)

Fax: 888-841-9041

[www.everestbiotech.com](http://www.everestbiotech.com)

**Research Use Only. Not for  
diagnostic or therapeutic use.**

## EB10922 - Goat Anti-Itih4 (mouse) Antibody

Size: 100µg specific antibody in 200µl



### Target Protein

**Principal Names:** Itih4, inter-alpha (globulin) inhibitor H4 (plasma Kallikrein-sensitive glycoprotein), H4P, IHRP, ITIHL1, PK120, ITI heavy chain H4, ITI-HC4, OTTMUSP00000032461, PK-120, gp120, inter-alpha-inhibitor heavy chain 4, inter-alpha-trypsin inhibitor family heavy chain-related protein, inter-alpha-trypsin inhibitor heavy chain H4, inter-alpha-trypsin inhibitor, heavy chain-like, 1, inter-alpha-trypsin inhibitor, heavy chain-related protein, plasma kallikrein sensitive glycoprotein 120, plasma kallikrein-sensitive glycoprotein 120

**Official Symbol:** Itih4

**Accession Number(s):** NP\_061216.2; NP\_001152771.1

**Non-Human GeneID(s):** 16427 (mouse), 54404 (rat)

**Important Comments:** This antibody is expected to recognize both reported isoforms (NP\_002209.2; NP\_001159921.1).

### Immunogen

Peptide with sequence C-KPEGQEQQVAEKP, from the internal region of the protein sequence according to NP\_061216.2; NP\_001152771.1.

Please note the [peptide](#) is available for sale.

### Purification and Storage

Purified from goat serum by ammonium sulphate precipitation followed by antigen affinity chromatography using the immunizing peptide.

Supplied at 0.5 mg/ml in Tris saline, 0.02% sodium azide, pH7.3 with 0.5% bovine serum albumin.

Aliquot and store at -20°C. Minimize freezing and thawing.

### Applications Tested

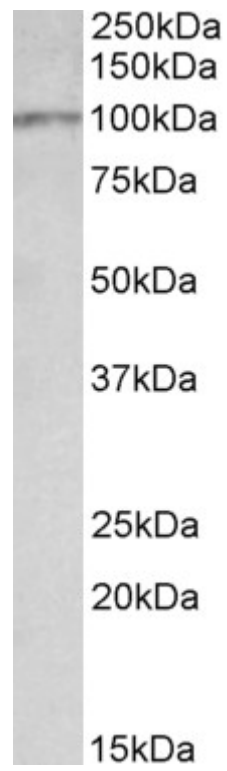
**Peptide ELISA:** antibody detection limit dilution 1:32000.

**Western blot:** Approx 100kDa band observed in Rat Liver lysates (calculated MW of 104kDa according to Rat NP\_062242.2). Recommended concentration: 0.03-0.1µg/ml.

### Species Reactivity

**Tested:** Rat

**Expected from sequence similarity:** Mouse, Rat



EB10922 (0.03 $\mu$ g/ml) staining of Rat Liver lysate (35 $\mu$ g protein in RIPA buffer). Primary incubation was 1 hour.  
Detected by chemiluminescence.