



## UK Office

### Everest Biotech Ltd

Cherwell Innovation Centre  
77 Heyford Park  
Upper Heyford  
Oxfordshire  
OX25 5HD  
UK

Enquiries:

[info@everestbiotech.com](mailto:info@everestbiotech.com)

Sales:

[sales@everestbiotech.com](mailto:sales@everestbiotech.com)

Tech support:

[support@everestbiotech.com](mailto:support@everestbiotech.com)

Tel: +44 (0)1869 238326

Fax: +44 (0)1869 238327

## US Office

### Everest Biotech c/o Abcore

405 Maple Street, Suite A106  
Ramona,  
CA 92065  
USA

Inquiries:

[info@everestbiotech.com](mailto:info@everestbiotech.com)

Sales:

[usasales@everestbiotech.com](mailto:usasales@everestbiotech.com)

Tech support:

[support@everestbiotech.com](mailto:support@everestbiotech.com)

Tel: 888-320-4628 (toll-free)

Fax: 888-841-9041

[www.everestbiotech.com](http://www.everestbiotech.com)

**Research Use Only. Not for  
diagnostic or therapeutic use.**

## EB08802 - Goat Anti-ITK Antibody

Size: 100µg specific antibody in 200µl



### Target Protein

**Principal Names:** ITK, IL2-inducible T-cell kinase, EMT, LYK, MGC126257, MGC126258, PSCTK2, homolog of mouse T-cell itk/tsk, tyrosine-protein kinase ITK/TSK, tyrosine-protein kinase LYK

**Official Symbol:** ITK

**Accession Number(s):** NP\_005537.3

**Human GeneID(s):** [3702](#)

### Immunogen

Peptide with sequence C-KERPEDRPAFSR, from the internal (near C terminus) of the protein sequence according to NP\_005537.3.

Please note the [peptide](#) is available for sale.

### Purification and Storage

Purified from goat serum by ammonium sulphate precipitation followed by antigen affinity chromatography using the immunizing peptide.

Supplied at 0.5 mg/ml in Tris saline, 0.02% sodium azide, pH7.3 with 0.5% bovine serum albumin.

Aliquot and store at -20°C. Minimize freezing and thawing.

### Applications Tested

**Peptide ELISA:** antibody detection limit dilution 1:64000.

**Western blot:** Approx 70kDa band observed in Rat Colon, Lung and Spleen lysates (calculated MW of 72.4kDa according to Rat NP\_001102295.2). Recommended concentration: 0.3-1µg/ml. Primary incubation 1 hour at room temperature.

**IHC:** Paraffin embedded Human Spleen. Recommended concentration: 3.75ug/ml.

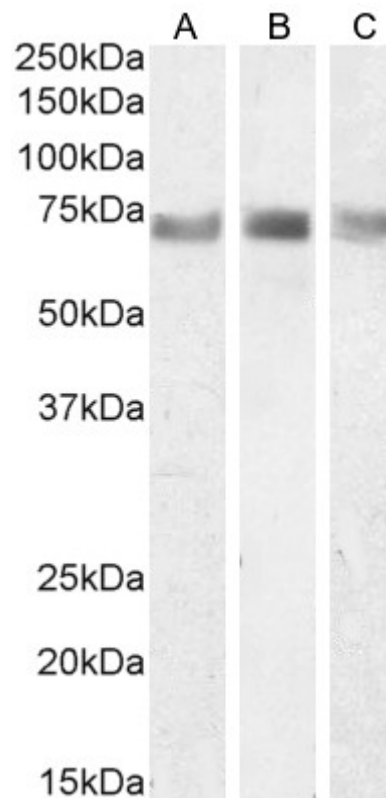
**Immunofluorescence:** Strong expression of the protein seen in the cytoplasm and membranes of Jurkat cells. Recommended concentration: 10µg/ml.

**Flow Cytometry:** Flow cytometric analysis of Jurkat cells. Recommended concentration: 10ug/ml.

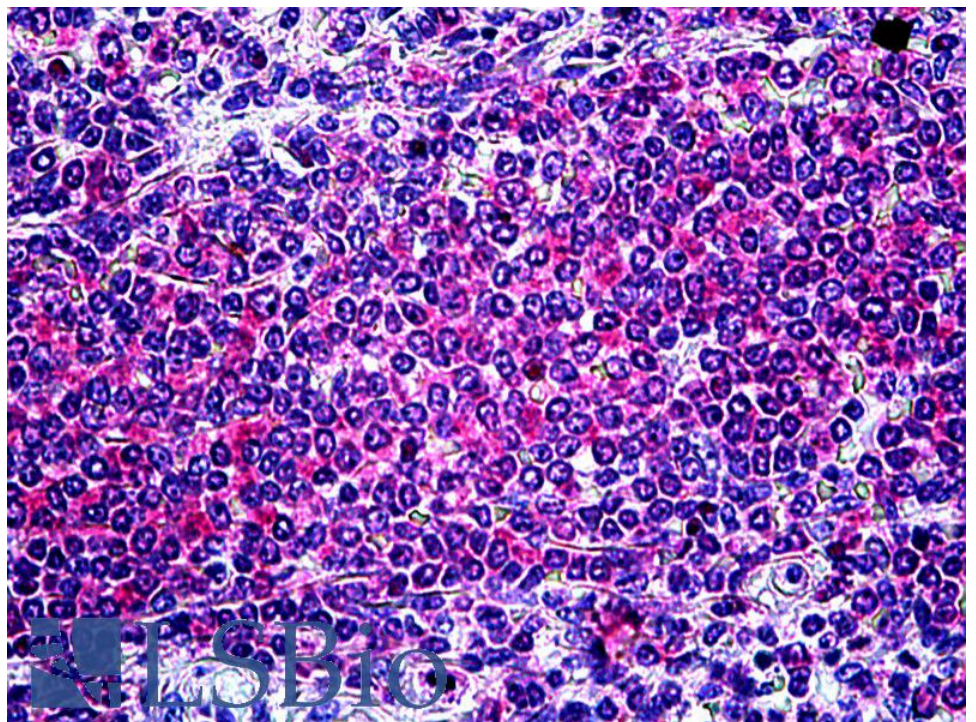
### Species Reactivity

**Tested:** Human, Rat

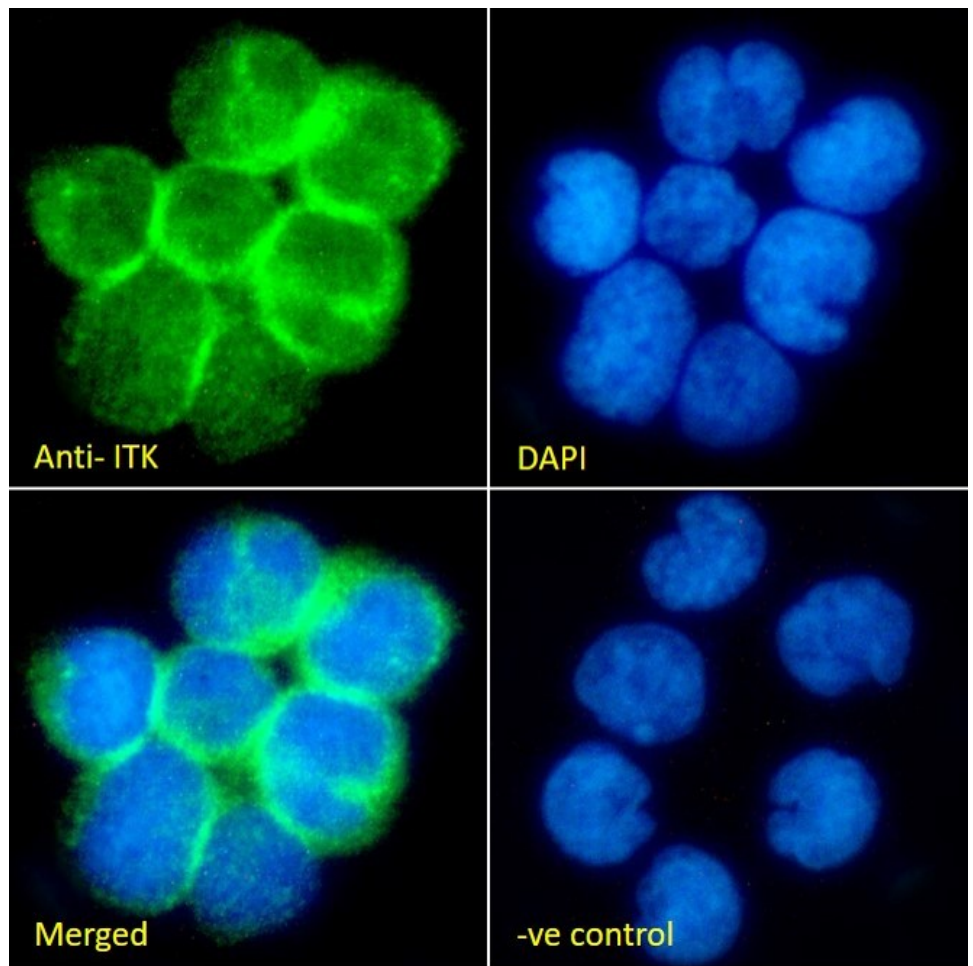
**Expected from sequence similarity:** Human, Rat, Cow



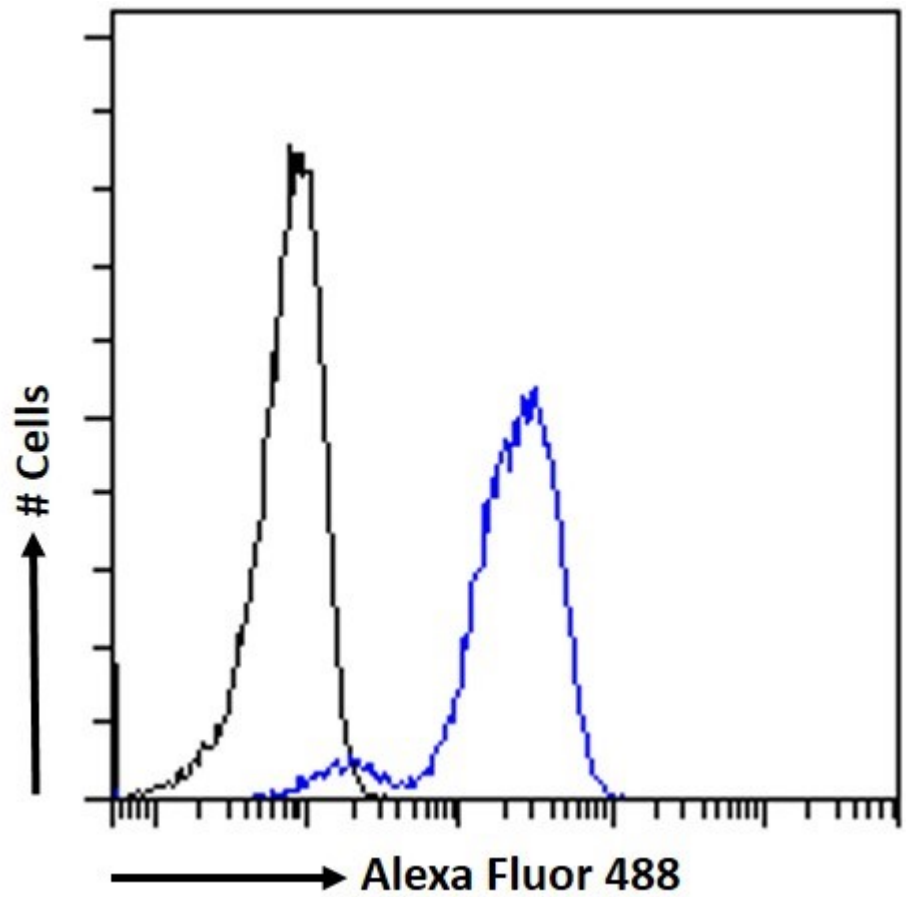
EB08802 (0.3 $\mu$ g/ml) staining of Rat Colon (A), (0.5 $\mu$ g/ml) Lung (B) and (1 $\mu$ g/ml) Spleen (C) lysate (35 $\mu$ g protein in RIPA buffer). Detected by chemiluminescence.



EB08802 (3.75 $\mu$ g/ml) staining of paraffin embedded Human Spleen. Steamed antigen retrieval with citrate buffer pH 6, AP-staining.



EB08802 Immunofluorescence analysis of paraformaldehyde fixed Jurkat cells immobilized on Shifix<sup>TM</sup> coverslip, permeabilized with 0.15% Triton. Primary incubation 1hr (10ug/ml) followed by Alexa Fluor 488 secondary antibody (2ug/ml), showing membrane and cytoplasmic staining. The nuclear stain is DAPI (blue). Negative control: Unimmunized goat IgG (10ug/ml) followed by Alexa Fluor 488 secondary antibody (2ug/ml).



EB08802 Flow cytometric analysis of paraformaldehyde fixed Jurkat cells (blue line), permeabilized with 0.5% Triton. Primary incubation 1hr (10ug/ml) followed by Alexa Fluor 488 secondary antibody (1ug/ml). IgG control: Unimmunized goat IgG (black line) followed by Alexa Fluor 488 secondary antibody.