



Everest Biotech Ltd
Cherwell Innovation Centre
77 Heyford Park
Upper Heyford
Oxfordshire
OX25 5HD, United Kingdom

everestbiotech.com

sales@everestbiotech.com

support@everestbiotech.com

Tel +44 1869 238326

Fax +44 1869 238327

Research Use Only. Not for diagnostic or therapeutic use.

Storage: For long-term storage keep aliquots at -20°C. (Store no longer than 12 months at 4°C). Minimize freezing and thawing.

EB06455 - Goat Anti-JIK / TAOK3 Antibody

Size: 100µg specific antibody in 200µl



Target Protein

Principal Names: MAP3K18, FLJ31808, DKFZp666H245, STE2-like kinase, STE20-like kinase, DPK, TAO kinase 3, JIK, TAOK3

Official Symbol: TAOK3

Accession Number(s): NP_057365.3

Human GeneID(s): [51347](#)

Non-Human GeneID(s): 304530 (rat)

Immunogen

Peptide with sequence CHKKDHFVIRDEAGHGD, from the internal region of the protein sequence according to NP_057365.3.

Please note the [peptide](#) is available for sale.

Purification and Storage

Purified from goat serum by ammonium sulphate precipitation followed by antigen affinity chromatography using the immunizing peptide.

Supplied at 0.5 mg/ml in Tris saline, 0.02% sodium azide, pH7.3 with 0.5% bovine serum albumin.

Aliquot and store at -20°C. Minimize freezing and thawing.

Applications Tested

Peptide ELISA: antibody detection limit dilution 1:32000.

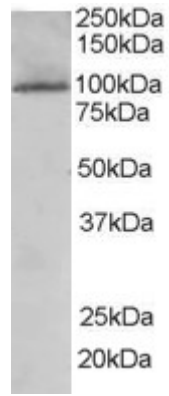
Western blot: Approx 100kDa band observed in human Liver lysate (calculated MW of 105kDa according to NP_057365). Recommended concentration: 0.3-1.0 µg/ml.

IHC: In paraffin embedded Human Prostate shows staining of cytoplasm of secretory cells in the glands. Recommended concentration, 2-3µg/ml.

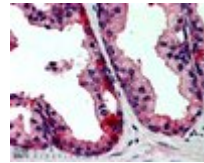
Species Reactivity

Tested: Human

Expected from sequence similarity: Human, Mouse, Rat, Dog, Cow



EB06455 (0.1µg/ml) staining of human liver lysate (35µg protein in RIPA buffer). Primary incubation was 1 hour. Detected by chemiluminescence.



EB06455 (2.5µg/ml) staining of paraffin embedded Human Prostate. Steamed antigen retrieval with citrate buffer pH 6, AP-staining.