



## UK Office

### Everest Biotech Ltd

Cherwell Innovation Centre  
77 Heyford Park  
Upper Heyford  
Oxfordshire  
OX25 5HD  
UK

Enquiries:

[info@everestbiotech.com](mailto:info@everestbiotech.com)

Sales:

[sales@everestbiotech.com](mailto:sales@everestbiotech.com)

Tech support:

[support@everestbiotech.com](mailto:support@everestbiotech.com)

Tel: +44 (0)1869 238326

Fax: +44 (0)1869 238327

## US Office

### Everest Biotech c/o Abcore

405 Maple Street, Suite A106  
Ramona,  
CA 92065  
USA

Inquiries:

[info@everestbiotech.com](mailto:info@everestbiotech.com)

Sales:

[usasales@everestbiotech.com](mailto:usasales@everestbiotech.com)

Tech support:

[support@everestbiotech.com](mailto:support@everestbiotech.com)

Tel: 888-320-4628 (toll-free)

Fax: 888-841-9041

[www.everestbiotech.com](http://www.everestbiotech.com)

**Research Use Only. Not for  
diagnostic or therapeutic use.**

## EB13078 - Goat Anti-JIP1 / MAPK8IP1 (aa265-279) Antibody

Size: 100µg specific antibody in 200µl



### Target Protein

**Principal Names:** MAPK8IP1, mitogen-activated protein kinase 8 interacting protein 1; IB1, JIP-1, JIP1, PRKM8IP, C-Jun-amino-terminal kinase-interacting protein 1, IB-1, JNK, JNK MAP kinase scaffold protein 1, JNK-interacting protein 1, PRKM8 interacting protein; islet-brain 1

**Official Symbol:** MAPK8IP1

**Accession Number(s):** NP\_005447.1

**Human GeneID(s):** [9479](#)

**Non-Human GeneID(s):** 19099 (mouse), 116457 (rat)

### Immunogen

Peptide with sequence C-DRIHYQADVRLATE, from the internal region of the protein sequence according to NP\_005447.1.

Please note the [peptide](#) is available for sale.

### Purification and Storage

Purified from goat serum by ammonium sulphate precipitation followed by antigen affinity chromatography using the immunizing peptide.

Supplied at 0.5 mg/ml in Tris saline, 0.02% sodium azide, pH7.3 with 0.5% bovine serum albumin.

Aliquot and store at -20°C. Minimize freezing and thawing.

### Applications Tested

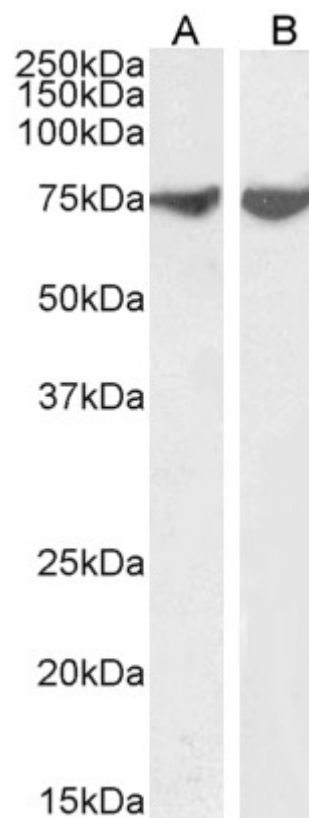
**Peptide ELISA:** antibody detection limit dilution 1:32000.

**Western blot:** Approx 75kDa band observed in Human Brain (Amygdala and Cerebellum) lysates (calculated MW of 77.5kDa according to NP\_005447.1). Recommended concentration: 0.3-1µg/ml. Primary incubation 1 hour at room temperature.

### Species Reactivity

**Tested:** Human

**Expected from sequence similarity:** Human, Mouse, Rat, Dog, Pig



EB13078 (1µg/ml) staining of Human Amygdala (A) and Cerebellum (B) lysate (35µg protein in RIPA buffer).  
Detected by chemiluminescence.