



UK Office

Everest Biotech Ltd

Cherwell Innovation Centre
77 Heyford Park
Upper Heyford
Oxfordshire
OX25 5HD
UK

Enquiries:

info@everestbiotech.com

Sales:

sales@everestbiotech.com

Tech support:

support@everestbiotech.com

Tel: +44 (0)1869 238326

Fax: +44 (0)1869 238327

US Office

Everest Biotech c/o Abcore

405 Maple Street, Suite A106
Ramona,
CA 92065
USA

Inquiries:

info@everestbiotech.com

Sales:

usasales@everestbiotech.com

Tech support:

support@everestbiotech.com

Tel: 888-320-4628 (toll-free)

Fax: 888-841-9041

www.everestbiotech.com

**Research Use Only. Not for
diagnostic or therapeutic use.**

EB05971 - Goat Anti-JIP3 / Syd2 / JSAP1 Antibody

Size: 100µg specific antibody in 200µl



Target Protein

Principal Names: MAPK8IP3, mitogen-activated protein kinase 8 interacting protein 3, JIP3, SYD2, JSAP1, FLJ00027, KIAA1066, JNK-interacting protein 3, JNK/SAPK-associated protein-1, similar to sperm specific protein, homolog of Drosophila Sunday driver 2, JNK/stress-activated protein kinase-associated protein 1, AC012180.8, DKFZp762N1113, C-jun-amino-terminal kinase interacting protein 3, homolog of Drosophila Sunday driver 2

Official Symbol: MAPK8IP3

Accession Number(s): NP_055948.2; NP_001035529.1

Human GeneID(s): [23162](#)

Non-Human GeneID(s): 30957 (mouse)

Important Comments: This antibody is expected to recognise both reported Human isoforms of this protein (as represented by NP_055948.2 and NP_001035529.1).

Immunogen

Peptide with sequence MEIQMDEGGGVV-C, from the N Terminus of the protein sequence according to NP_055948.2; NP_001035529.1.

Please note the [peptide](#) is available for sale.

Purification and Storage

Purified from goat serum by ammonium sulphate precipitation followed by antigen affinity chromatography using the immunizing peptide.

Supplied at 0.5 mg/ml in Tris saline, 0.02% sodium azide, pH7.3 with 0.5% bovine serum albumin.

Aliquot and store at -20°C. Minimize freezing and thawing.

Applications Tested

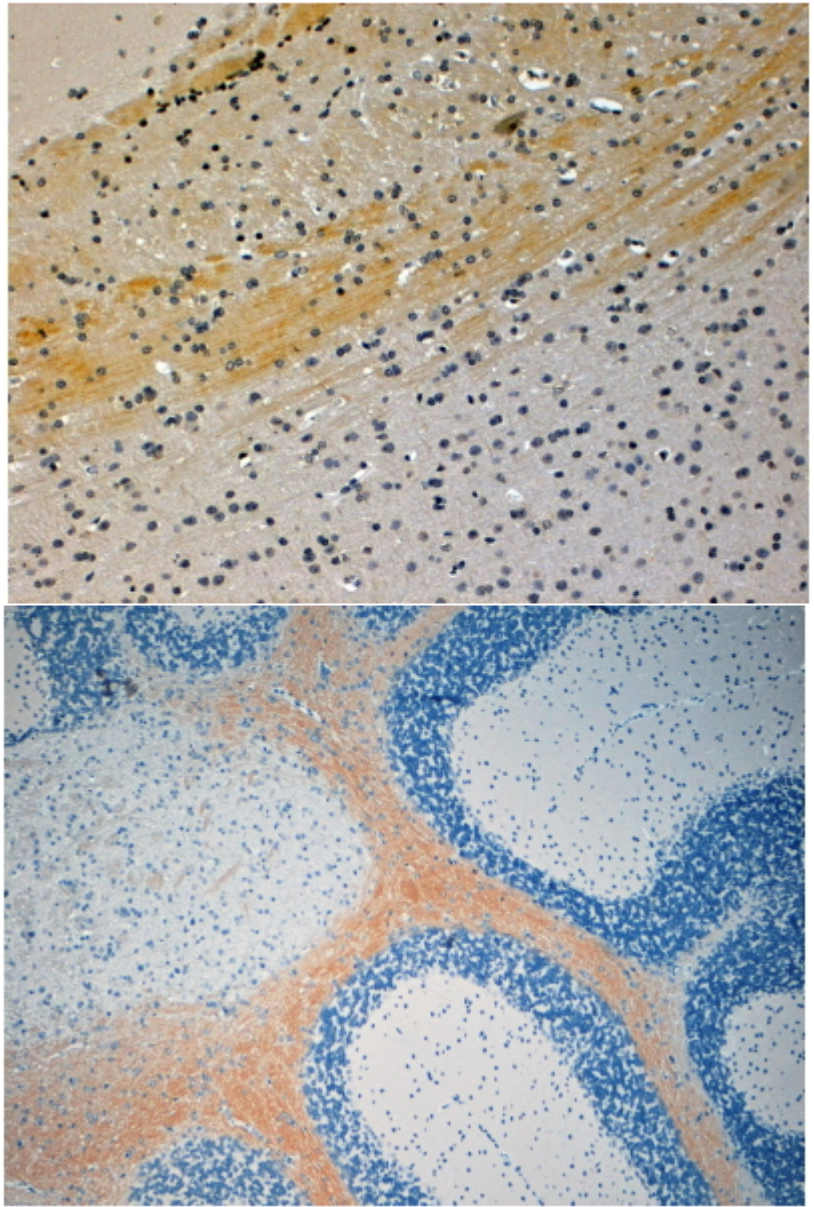
Peptide ELISA: antibody detection limit dilution 1:4000.

IHC: In paraffin embedded Mouse Brain shows axonal staining in various regions. Recommended concentration, 4-6µg/ml.

Species Reactivity

Tested: Mouse

Expected from sequence similarity: Human, Mouse, Rat, Cow



EB05971 (4 μ g/ml) staining of paraffin embedded Mouse Brain. Steamed antigen retrieval with citrate buffer pH 6, HRP-staining.