



## UK Office

### Everest Biotech Ltd

Cherwell Innovation Centre  
77 Heyford Park  
Upper Heyford  
Oxfordshire  
OX25 5HD  
UK

Enquiries:

[info@everestbiotech.com](mailto:info@everestbiotech.com)

Sales:

[sales@everestbiotech.com](mailto:sales@everestbiotech.com)

Tech support:

[support@everestbiotech.com](mailto:support@everestbiotech.com)

Tel: +44 (0)1869 238326

Fax: +44 (0)1869 238327

## US Office

### Everest Biotech c/o Abcore

405 Maple Street, Suite A106  
Ramona,  
CA 92065  
USA

Inquiries:

[info@everestbiotech.com](mailto:info@everestbiotech.com)

Sales:

[usasales@everestbiotech.com](mailto:usasales@everestbiotech.com)

Tech support:

[support@everestbiotech.com](mailto:support@everestbiotech.com)

Tel: 888-320-4628 (toll-free)

Fax: 888-841-9041

[www.everestbiotech.com](http://www.everestbiotech.com)

**Research Use Only. Not for  
diagnostic or therapeutic use.**

## EB06143 - Goat Anti-Kalirin Antibody

Size: 100µg specific antibody in 200µl



### Target Protein

**Principal Names:** KALRN, kalirin, RhoGEF kinase, FLJ16443, HAPIP, TRAD, duo, huntingtin-associated protein interacting protein (duo), serine/threonine kinase with Dbl- and pleckstrin homology domains, hCG\_2022551, DUET, DUO, FLJ12332, FLJ18196, FLJ18623

**Official Symbol:** KALRN

**Accession Number(s):** NP\_003938.1; NP\_001309918.1; NP\_001309919.1; NP\_001309920.1; NP\_001309921.1

**Human GeneID(s):** [8997](#)

**Non-Human GeneID(s):** 545156 (mouse), 84009 (rat)

**Important Comments:** This antibody is expected to recognise NP\_003938.1;(isoform 2), NP\_001309918.1 (isoform 5), NP\_001309919.1;(isoform 6), NP\_001309920.1 (isoform 7), and NP\_001309921.1 (isoform 8).

### Immunogen

Peptide with sequence C-RWHLGPGDPFSTYV, from the C Terminus of the protein sequence according to NP\_003938.1; NP\_001309918.1; NP\_001309919.1; NP\_001309920.1; NP\_001309921.1.

Please note the [peptide](#) is available for sale.

### Purification and Storage

Purified from goat serum by ammonium sulphate precipitation followed by antigen affinity chromatography using the immunizing peptide.

Supplied at 0.5 mg/ml in Tris saline, 0.02% sodium azide, pH7.3 with 0.5% bovine serum albumin.

Aliquot and store at -20°C. Minimize freezing and thawing.

### Applications Tested

**Peptide ELISA:** antibody detection limit dilution 1:16000.

**Western blot:** Preliminary testing showed a band at approx.. 200kDa in Rat Brain lysate, after 0.1ug/ml antibody staining (calculated Mwt. of 192.5 kDa according to XP\_038944588.1). Primary incubation 1 hour at room temperature.

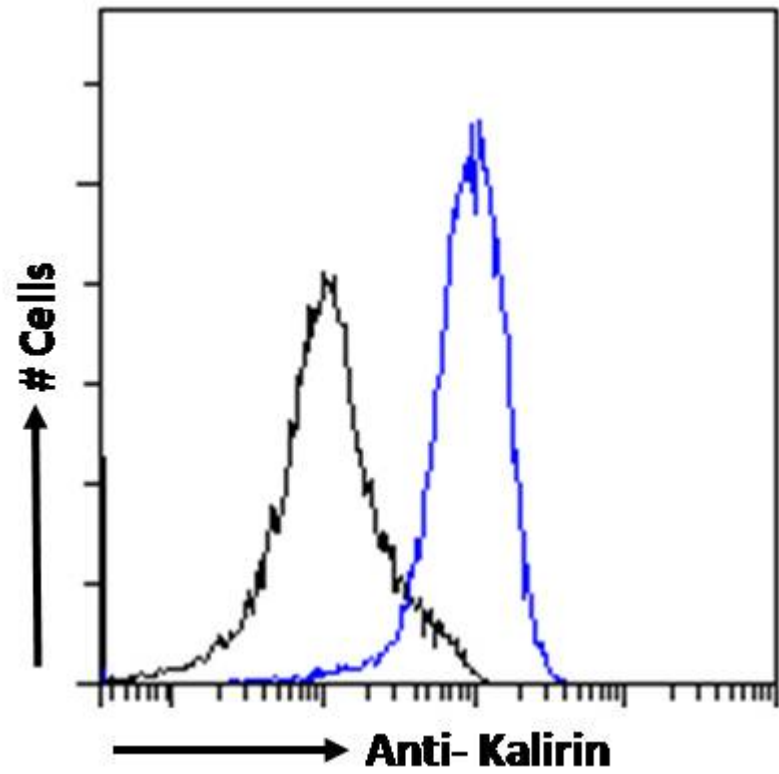
**IHC:** Paraffin embedded Human Brain (Cortex). Recommended concentration: 4-5µg/ml.

**Flow Cytometry:** Flow cytometric analysis of HepG2 cells. Recommended concentration: 10ug/ml.

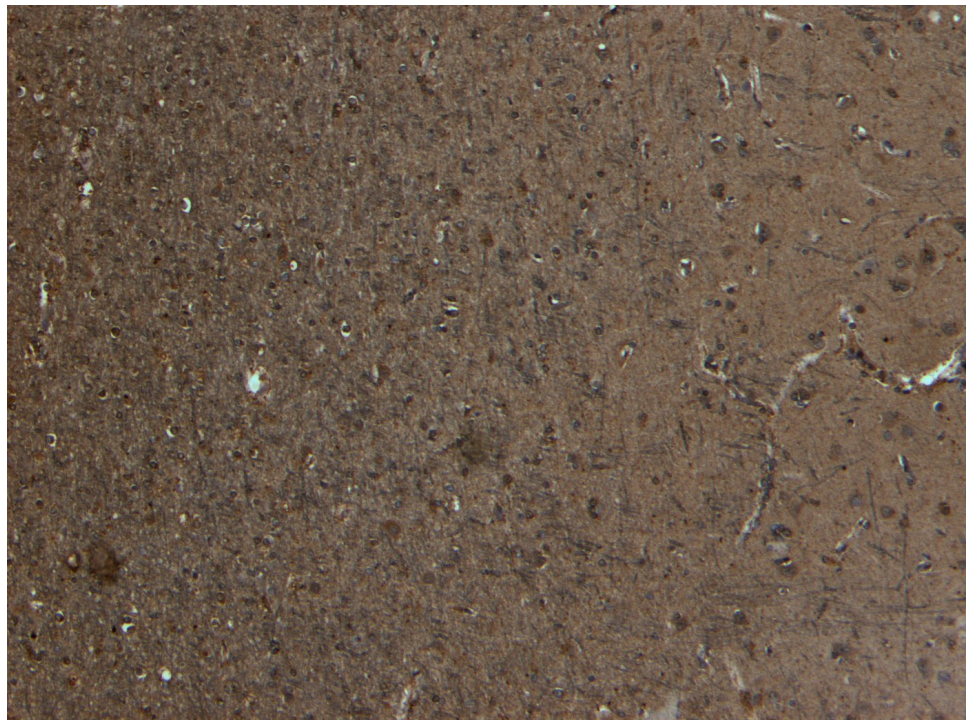
### Species Reactivity

**Tested:** Human

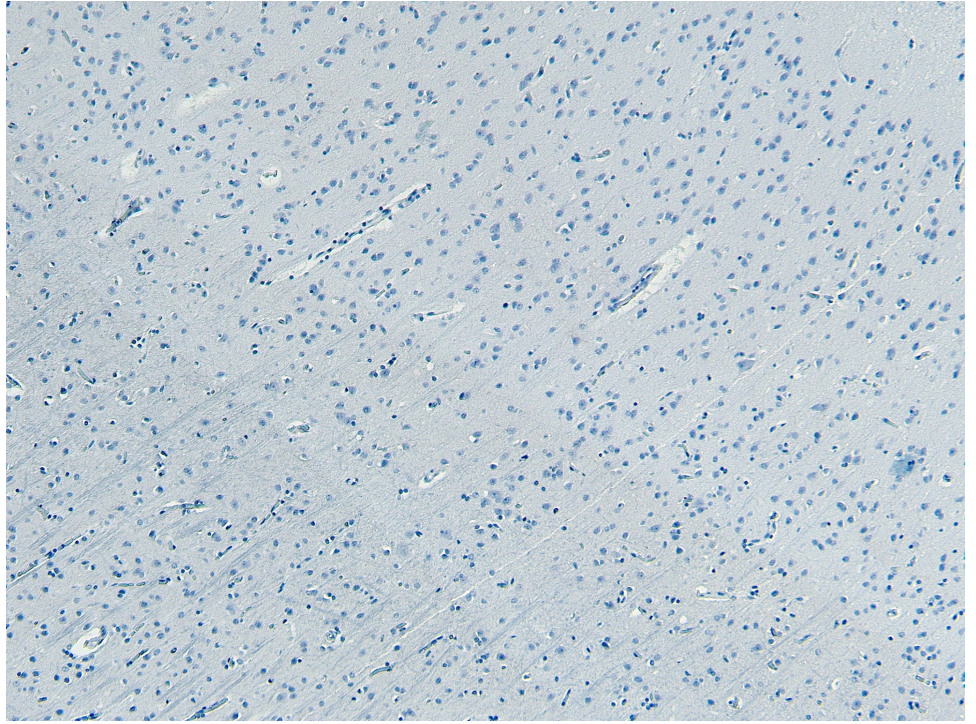
**Expected from sequence similarity:** Human, Mouse, Rat



EB06143 Flow cytometric analysis of paraformaldehyde fixed A431 cells (blue line), permeabilized with 0.5% Triton. Primary incubation 1hr (10ug/ml) followed by Alexa Fluor 488 secondary antibody (1ug/ml). IgG control: Unimmunized goat IgG (black line) followed by Alexa Fluor 488 secondary antibody.



EB06143 (5µg/ml) staining of paraffin embedded Human Cortex. Heat induced antigen retrieval with citrate buffer pH 6, HRP-staining.



EB06143 Negative Control showing staining of paraffin embedded Human Cortex, with no primary antibody.