



UK Office

Everest Biotech Ltd

Cherwell Innovation Centre
77 Heyford Park
Upper Heyford
Oxfordshire
OX25 5HD
UK

Enquiries:

info@everestbiotech.com

Sales:

sales@everestbiotech.com

Tech support:

support@everestbiotech.com

Tel: +44 (0)1869 238326

Fax: +44 (0)1869 238327

US Office

Everest Biotech c/o Abcore

405 Maple Street, Suite A106
Ramona,
CA 92065
USA

Inquiries:

info@everestbiotech.com

Sales:

usasales@everestbiotech.com

Tech support:

support@everestbiotech.com

Tel: 888-320-4628 (toll-free)

Fax: 888-841-9041

www.everestbiotech.com

**Research Use Only. Not for
diagnostic or therapeutic use.**

EB07018 - Goat Anti-Karyopherin (importin) beta 1 Antibody

Size: 100µg specific antibody in 200µl



Target Protein

Principal Names: karyopherin (importin) beta 1, HGNC:6400, KPNB1, IMB1, IPOB, Impnb, MGC2155, MGC2156, MGC2157, NTF97, importin 90, importin beta-1 subunit, karyopherin beta 1, nuclear factor p97, KapB1, IPO1

Official Symbol: KPNB1

Accession Number(s): NP_002256.2; NP_001263382.1

Human GeneID(s): [3837](#)

Non-Human GeneID(s): 16211 (mouse), 24917 (rat)

Immunogen

Peptide with sequence C-RRSKTNKAKTLAT, from the C Terminus of the protein sequence according to NP_002256.2; NP_001263382.1.

Please note the [peptide](#) is available for sale.

Purification and Storage

Purified from goat serum by ammonium sulphate precipitation followed by antigen affinity chromatography using the immunizing peptide.

Supplied at 0.5 mg/ml in Tris saline, 0.02% sodium azide, pH7.3 with 0.5% bovine serum albumin.

Aliquot and store at -20°C. Minimize freezing and thawing.

Applications Tested

Peptide ELISA: antibody detection limit dilution 1:32000.

Western blot: Approx 90-95-kDa band observed in lysates of cell lines A431, Daudi, HEK293, HeLa, Jurkat, Kelly and KNRK (calculated MW of 97.2kDa according to Human NP_002256.2 and Rat NP_058759.2). Recommended concentration: 0.01-0.1µg/ml.

Primary incubation 1 hour at room temperature.

IHC: Paraffin embedded Human Spleen. Recommended concentration: 5µg/ml.

Immunofluorescence: Strong expression of the protein seen in U2OS cells.

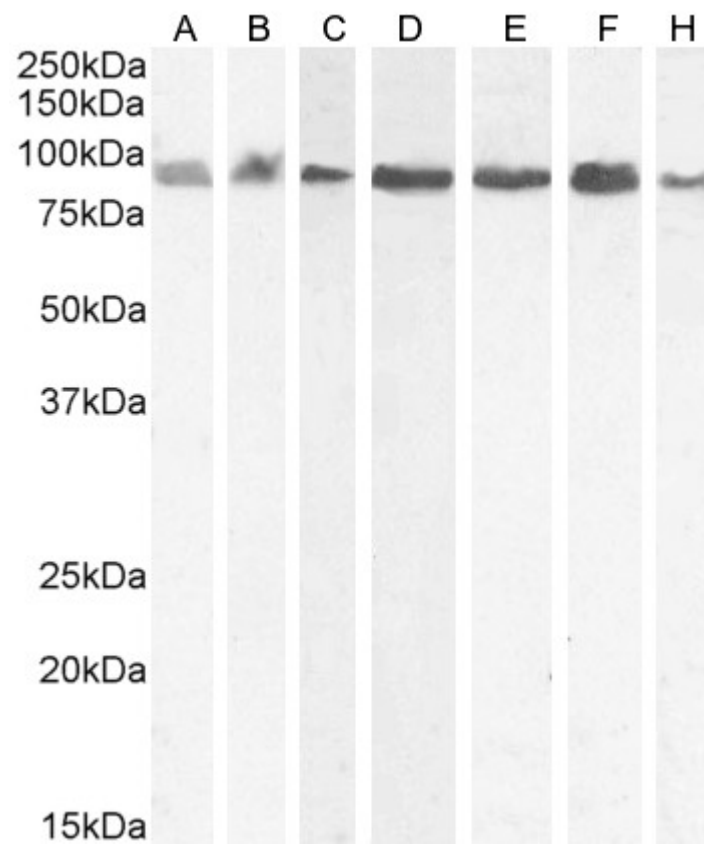
Recommended concentration: 10µg/ml.

Flow Cytometry: Flow cytometric analysis of A431 cells. Recommended concentration: 10ug/ml.

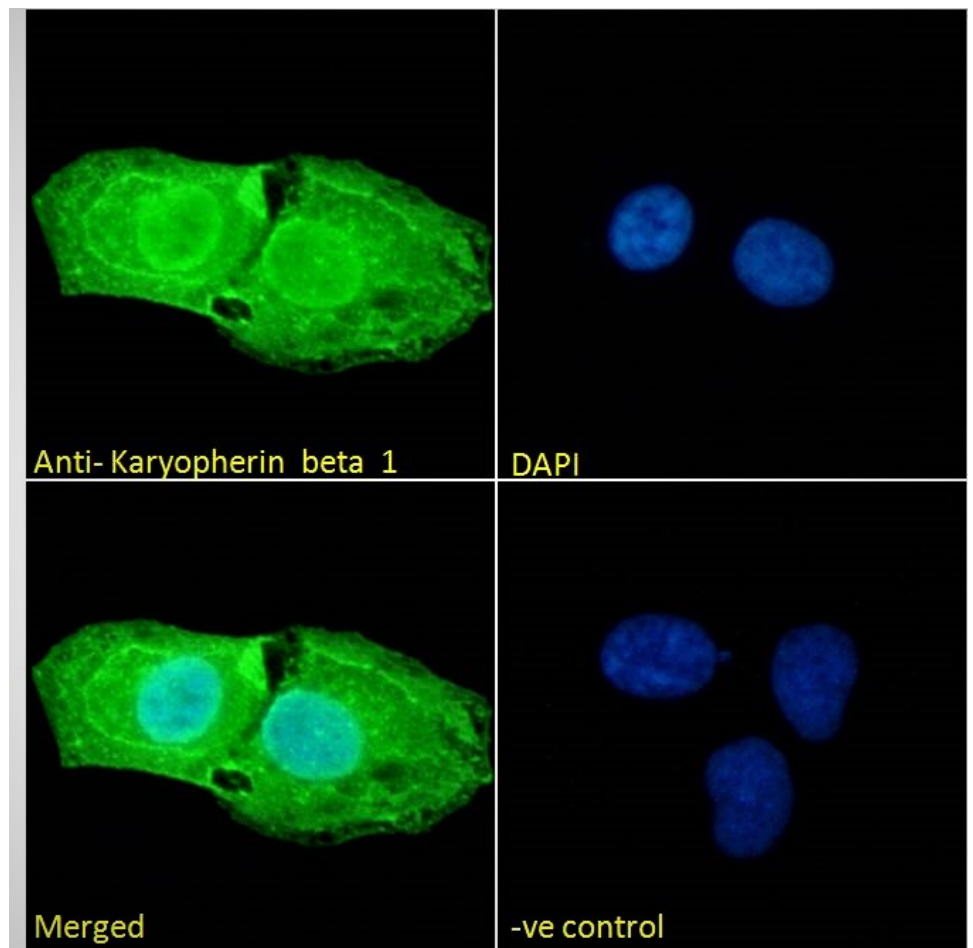
Species Reactivity

Tested: Human, Rat

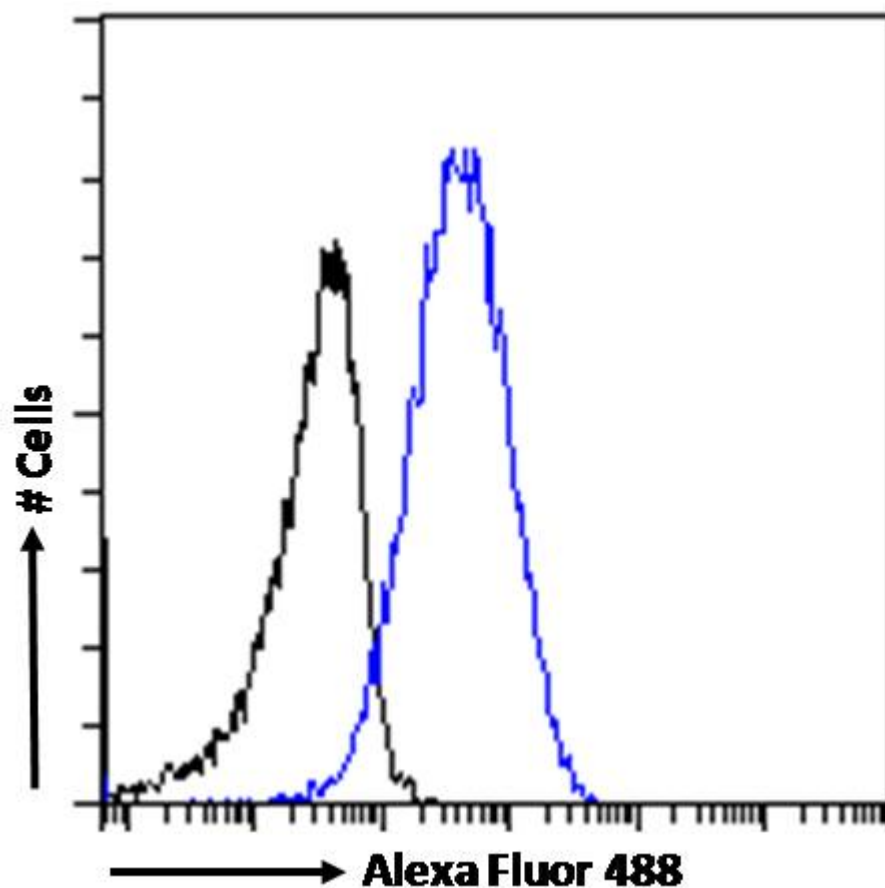
Expected from sequence similarity: Human, Mouse, Rat, Dog, Cow



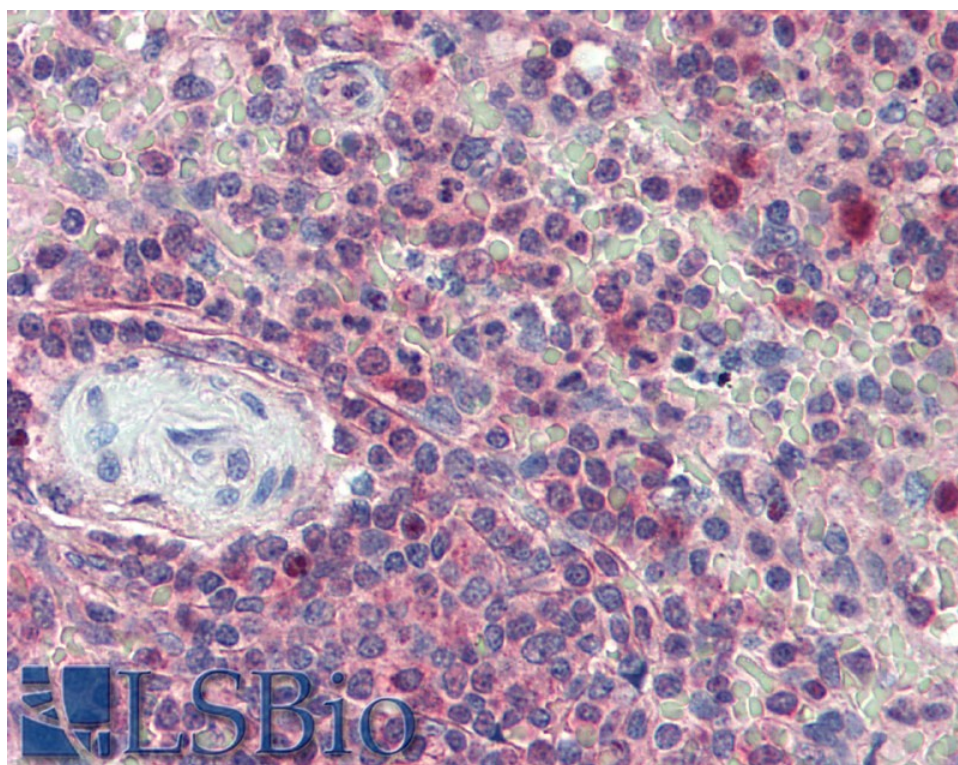
EB07018 (0.03 μ g/ml) staining of A431 (A), HEK293 (B), Jurkat (C), (0.01 μ g/ml) Daudi (D), HeLa (E) and (0.1 μ g/ml) Kelly (F) and KNRK (G) cell lysate (35 μ g protein in RIPA buffer). Detected by chemiluminescence.



EB07018 Immunofluorescence analysis of paraformaldehyde fixed U2OS cells, permeabilized with 0.15% Triton. Primary incubation 1hr (10ug/ml) followed by Alexa Fluor 488 secondary antibody (2ug/ml), showing nuclear membrane, nuclear and cytoplasmic staining. The nuclear stain is DAPI (blue). Negative control: Unimmunized goat IgG (10ug/ml) followed by Alexa Fluor 488 secondary antibody (2ug/ml).



EB07018 Flow cytometric analysis of paraformaldehyde fixed A431 cells (blue line), permeabilized with 0.5% Triton. Primary incubation 1hr (10ug/ml) followed by Alexa Fluor 488 secondary antibody (1ug/ml). IgG control: Unimmunized goat IgG (black line) followed by Alexa Fluor 488 secondary antibody.



EB07018 (5µg/ml) staining of paraffin embedded Human Spleen. Steamed antigen retrieval with citrate buffer pH 6, AP-staining.