



## UK Office

### Everest Biotech Ltd

Cherwell Innovation Centre  
77 Heyford Park  
Upper Heyford  
Oxfordshire  
OX25 5HD  
UK

Enquiries:

[info@everestbiotech.com](mailto:info@everestbiotech.com)

Sales:

[sales@everestbiotech.com](mailto:sales@everestbiotech.com)

Tech support:

[support@everestbiotech.com](mailto:support@everestbiotech.com)

Tel: +44 (0)1869 238326

Fax: +44 (0)1869 238327

## US Office

### Everest Biotech c/o Abcore

405 Maple Street, Suite A106  
Ramona,  
CA 92065  
USA

Inquiries:

[info@everestbiotech.com](mailto:info@everestbiotech.com)

Sales:

[usasales@everestbiotech.com](mailto:usasales@everestbiotech.com)

Tech support:

[support@everestbiotech.com](mailto:support@everestbiotech.com)

Tel: 888-320-4628 (toll-free)

Fax: 888-841-9041

[www.everestbiotech.com](http://www.everestbiotech.com)

**Research Use Only. Not for  
diagnostic or therapeutic use.**

## EB08090 - Goat Anti-KCC3 / SLC12A6 Antibody

Size: 100µg specific antibody in 200µl



### Target Protein

**Principal Names:** SLC12A6, KCC3, solute carrier family 12 (potassium/chloride transporters), member 6, ACCPN, DKFZP434D2135, KCC3A, KCC3B, potassium chloride cotransporter 3, electroneutral potassium-chloride cotransporter 3, K-Cl cotransporter 3, potassium chloride cotransporter KCC3a-S3, potassium-chloride transporter-3a, potassium-chloride transporter-3b, solute carrier family 12 (potassium/chloride transporter), member 6

**Official Symbol:** SLC12A6

**Accession Number(s):** NP\_001035959.1; NP\_001035960.1; NP\_001035961.1; NP\_001035962.1; NP\_005126.1; NP\_598408.1

**Human GeneID(s):** [9990](#)

**Important Comments:** This antibody is expected to recognise all reported isoforms (NP\_598408.1; NP\_005126.1; NP\_001035959.1; NP\_001035961.1; NP\_001035962.1); Reported variants represent identical protein: NP\_001035959.1; NP\_001035960.1

### Immunogen

Peptide with sequence SRHIDVCSKTKE, from the internal region of the protein sequence according to NP\_001035959.1; NP\_001035960.1; NP\_001035961.1; NP\_001035962.1; NP\_005126.1; NP\_598408.1.

Please note the [peptide](#) is available for sale.

### Purification and Storage

Purified from goat serum by ammonium sulphate precipitation followed by antigen affinity chromatography using the immunizing peptide.

Supplied at 0.5 mg/ml in Tris saline, 0.02% sodium azide, pH7.3 with 0.5% bovine serum albumin.

Aliquot and store at -20°C. Minimize freezing and thawing.

### Applications Tested

**Peptide ELISA:** antibody detection limit dilution 1:16000.

**Western blot:** Approx 120kDa band observed in Human Heart and Kidney lysates (calculated MW ranging 121-128kDa according to NP\_598408.1; NP\_005126.1; NP\_001035959.1; NP\_001035960.1; NP\_001035961.1; NP\_001035962.1).

Recommended concentration: 0.1-0.3µg/ml.

**IHC:** In paraffin embedded Human Heart shows staining of myocardial fibrils in transverse section. Recommended concentration, 2-4µg/ml.

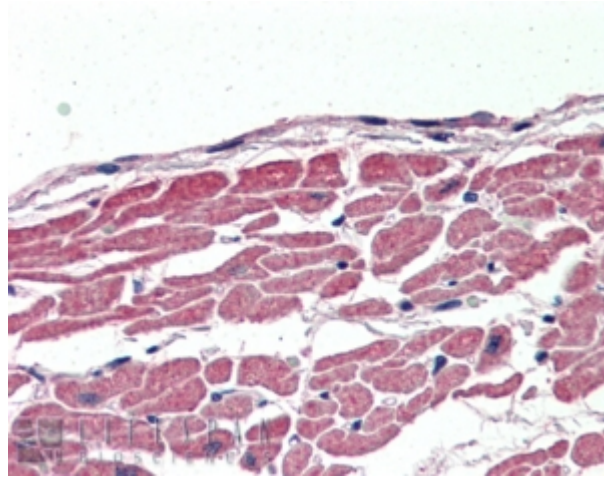
### Species Reactivity

**Tested:** Human

**Expected from sequence similarity:** Human



EB08090 (0.1µg/ml) staining of Human Heart lysate (35µg protein in RIPA buffer). Primary incubation was 1 hour. Detected by chemiluminescence.



EB08090 (2.5µg/ml) staining of paraffin embedded Human Heart. Steamed antigen retrieval with citrate buffer pH 6, AP-staining.