

UK Office

Everest Biotech Ltd

Cherwell Innovation Centre
77 Heyford Park
Upper Heyford
Oxfordshire
OX25 5HD
UK

Enquiries:

info@everestbiotech.com

Sales:

sales@everestbiotech.com

Tech support:

support@everestbiotech.com

Tel: +44 (0)1869 238326

www.everestbiotech.com

**Research Use Only. Not for
diagnostic or therapeutic use.**

EB07388 - Goat Anti-KCNC3 Antibody

Size: 100µg specific antibody in 200µl



Target Protein

Principal Names: KCNC3, potassium voltage-gated channel, Shaw-related subfamily, member 3, KSHIID, KV3.3, SCA13, Shaw-related voltage-gated potassium channel protein 3, spinocerebellar ataxia 13, voltage-gated potassium channel protein KV3.3

Official Symbol: KCNC3

Accession Number(s): NP_004968.2

Human GeneID(s): [3748](#)

Immunogen

Peptide with sequence C-KPGPPSFLPDLNAN, from the C Terminus of the protein sequence according to NP_004968.2.

Please note the [peptide](#) is available for sale.

Purification and Storage

Purified from goat serum by ammonium sulphate precipitation followed by antigen affinity chromatography using the immunizing peptide.

Supplied at 0.5 mg/ml in Tris saline, 0.02% sodium azide, pH7.3 with 0.5% bovine serum albumin.

Aliquot and store at -20°C. Minimize freezing and thawing.

Applications Tested

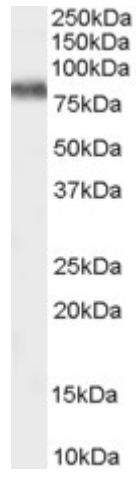
Peptide ELISA: antibody detection limit dilution 1:32000.

Western blot: Approx 80Da band observed in human brain (Frontal Cortex) lysates (calculated MW of 80.6kDa according to NP_004968.2). Recommended concentration: 0.3-1µg/ml.

Species Reactivity

Tested: Human

Expected from sequence similarity: Human



EB07388 (0.3 μ g/ml) staining of human brain (Frontal Cortex) lysate (35 μ g protein in RIPA buffer). Primary incubation was 1 hour. Detected by chemiluminescence.