



UK Office

Everest Biotech Ltd

Cherwell Innovation Centre
77 Heyford Park
Upper Heyford
Oxfordshire
OX25 5HD
UK

Enquiries:

info@everestbiotech.com

Sales:

sales@everestbiotech.com

Tech support:

support@everestbiotech.com

Tel: +44 (0)1869 238326

www.everestbiotech.com

**Research Use Only. Not for
diagnostic or therapeutic use.**

EB11266 - Goat Anti-KCNC3 / Kv3.3 (aa317-328) Antibody

Size: 100µg specific antibody in 200µl



Target Protein

Principal Names: KSHIID, KV3.3, OTTHUMP00000042078, potassium voltage-gated channel subfamily C member 3, potassium voltage-gated channel, Shaw-related subfamily, member 3, SCA13, Shaw-related voltage-gated potassium channel protein 3, voltage-gated potassium channel protein KV3.3, voltage-gated potassium channel subunit Kv3.3, KCNC3

Official Symbol: KCNC3

Accession Number(s): NP_004968.2

Human GeneID(s): [3748](#)

Non-Human GeneID(s): 16504 (mouse), 117101 (rat)

Immunogen

Peptide with sequence C-HISNKTVTQASP, from the internal region of the protein sequence according to NP_004968.2.

Please note the [peptide](#) is available for sale.

Purification and Storage

Purified from goat serum by ammonium sulphate precipitation followed by antigen affinity chromatography using the immunizing peptide.

Supplied at 0.5 mg/ml in Tris saline, 0.02% sodium azide, pH7.3 with 0.5% bovine serum albumin.

Aliquot and store at -20°C. Minimize freezing and thawing.

Applications Tested

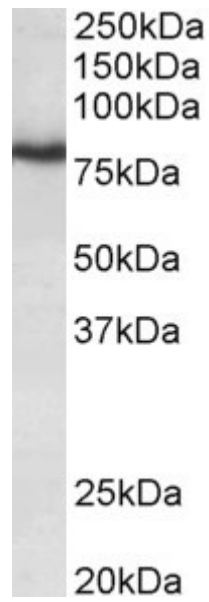
Peptide ELISA: antibody detection limit dilution 1:16000.

Western blot: Approx 80kDa band observed in Mouse and Rat Brain lysates (calculated MW of 81.9kDa according to Mouse NP_032448.2). Recommended concentration: 0.3-1µg/ml.

Species Reactivity

Tested: Mouse, Rat

Expected from sequence similarity: Human, Mouse, Rat, Pig



EB11266 (0.3 μ g/ml) staining of Mouse Brain lysate (35 μ g protein in RIPA buffer). Primary incubation was 1 hour. Detected by chemiluminescence.