



UK Office

Everest Biotech Ltd

Cherwell Innovation Centre
77 Heyford Park
Upper Heyford
Oxfordshire
OX25 5HD
UK

Enquiries:

info@everestbiotech.com

Sales:

sales@everestbiotech.com

Tech support:

support@everestbiotech.com

Tel: +44 (0)1869 238326

Fax: +44 (0)1869 238327

US Office

Everest Biotech c/o Abcore

405 Maple Street, Suite A106
Ramona,
CA 92065
USA

Inquiries:

info@everestbiotech.com

Sales:

usasales@everestbiotech.com

Tech support:

support@everestbiotech.com

Tel: 888-320-4628 (toll-free)

Fax: 888-841-9041

www.everestbiotech.com

**Research Use Only. Not for
diagnostic or therapeutic use.**

EB11267 - Goat Anti-Kcnc3 / Kv3.3 (mouse) Antibody

Size: 100µg specific antibody in 200µl



Target Protein

Principal Names: Kcr2-3, KSHIID, KV3.3, OTTMUSP00000024528, OTTMUSP00000024531, potassium voltage-gated channel subfamily C member 3, potassium voltage-gated channel, Shaw-related subfamily, member 3, voltage-gated potassium channel subunit Kv3.3, Kcnc3

Official Symbol: Kcnc3

Accession Number(s): NP_032448.2

Non-Human GeneID(s): 16504 (mouse), 117101 (rat)

Immunogen

Peptide with sequence C-QEEVIETNRADPR, from the internal region of the protein sequence according to NP_032448.2.

Please note the [peptide](#) is available for sale.

Purification and Storage

Purified from goat serum by ammonium sulphate precipitation followed by antigen affinity chromatography using the immunizing peptide.

Supplied at 0.5 mg/ml in Tris saline, 0.02% sodium azide, pH7.3 with 0.5% bovine serum albumin.

Aliquot and store at -20°C. Minimize freezing and thawing.

Applications Tested

Peptide ELISA: antibody detection limit dilution 1:64000.

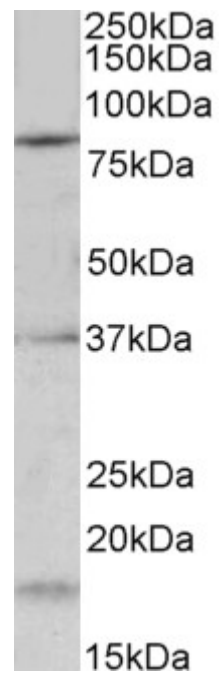
Western blot: Approx 80kDa band observed in Mouse fetal Brain lysates (calculated MW of 81.9kDa according to NP_032448.2). Recommended concentration: 0.2-0.6µg/ml.

Some minor background is detected and is blocked by the immunizing peptide. We call for caution when used for other assays than Western blot.

Species Reactivity

Tested: Mouse

Expected from sequence similarity: Mouse, Rat, Pig



EB11267 (0.2 μ g/ml) staining of Mouse fetal Brain lysate (35 μ g protein in RIPA buffer). Primary incubation was 1 hour. Detected by chemiluminescence.