

## UK Office

### Everest Biotech Ltd

Cherwell Innovation Centre  
77 Heyford Park  
Upper Heyford  
Oxfordshire  
OX25 5HD  
UK

Enquiries:

[info@everestbiotech.com](mailto:info@everestbiotech.com)

Sales:

[sales@everestbiotech.com](mailto:sales@everestbiotech.com)

Tech support:

[support@everestbiotech.com](mailto:support@everestbiotech.com)

Tel: +44 (0)1869 238326

[www.everestbiotech.com](http://www.everestbiotech.com)

**Research Use Only. Not for  
diagnostic or therapeutic use.**

## EB07765 - Goat Anti-KCNJ11 / KATP / Antibody

Size: 100µg specific antibody in 200µl



### Target Protein

**Principal Names:** KCNJ11, IKATP, potassium inwardly-rectifying channel, subfamily J, member 11, BIR, HHF2, KIR6.2, MGC133230, PHHI, TNDM3, ATP-sensitive inward rectifier potassium channel 11, beta-cell inward rectifier subunit, inwardly rectifying potassium channel KIR6.2, potassium inwardly-rectifying channel J11

**Official Symbol:** KCNJ11

**Accession Number(s):** NP\_000516.3

**Human GeneID(s):** [3767](#)

**Important Comments:** This antibody is expected to recognise isoform 1 (NP\_000516.3) only.

### Immunogen

Peptide with sequence C-AEDPAKPRYRARQ, from the internal region (near the N Terminus) of the protein sequence according to NP\_000516.3.

Please note the [peptide](#) is available for sale.

### Purification and Storage

Purified from goat serum by ammonium sulphate precipitation followed by antigen affinity chromatography using the immunizing peptide.

Supplied at 0.5 mg/ml in Tris saline, 0.02% sodium azide, pH7.3 with 0.5% bovine serum albumin.

Aliquot and store at -20°C. Minimize freezing and thawing.

### Applications Tested

**Peptide ELISA:** antibody detection limit dilution 1:32000.

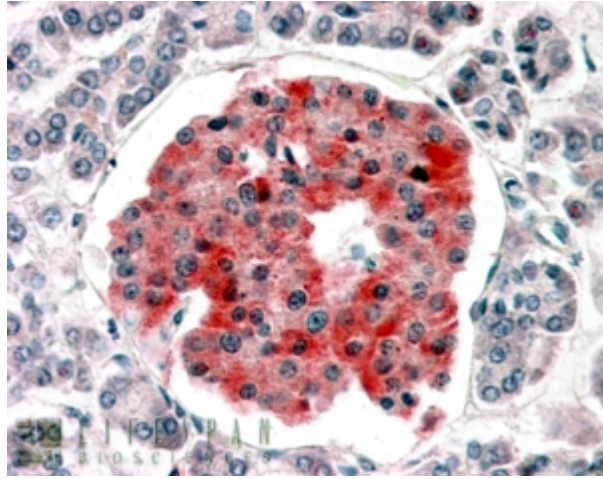
**Western blot:** Approx 45-48kDa band observed in Human Skeletal Muscle lysates (calculated MW of 43.5kDa according to NP\_000516.3). Recommended concentration: 0.1-0.3µg/ml.

**IHC:** In paraffin embedded Human Pancreas shows variable staining across the islet of Langerhans. Recommended concentration, 3-5µg/ml.

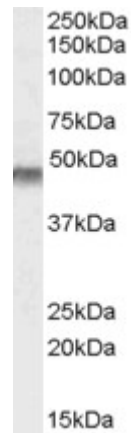
### Species Reactivity

**Tested:** Human

**Expected from sequence similarity:** Human



EB07765 (3.8 $\mu$ g/ml) staining of paraffin embedded Human Pancreas. Steamed antigen retrieval with citrate buffer pH 6, AP-staining.



EB07765 (0.1 $\mu$ g/ml) staining of Human Muscle lysate (35 $\mu$ g protein in RIPA buffer). Primary incubation was 1 hour. Detected by chemiluminescence.