



UK Office

Everest Biotech Ltd

Cherwell Innovation Centre
77 Heyford Park
Upper Heyford
Oxfordshire
OX25 5HD
UK

Enquiries:

info@everestbiotech.com

Sales:

sales@everestbiotech.com

Tech support:

support@everestbiotech.com

Tel: +44 (0)1869 238326

Fax: +44 (0)1869 238327

US Office

Everest Biotech c/o Abcore

405 Maple Street, Suite A106
Ramona,
CA 92065
USA

Inquiries:

info@everestbiotech.com

Sales:

usasales@everestbiotech.com

Tech support:

support@everestbiotech.com

Tel: 888-320-4628 (toll-free)

Fax: 888-841-9041

www.everestbiotech.com

**Research Use Only. Not for
diagnostic or therapeutic use.**

EB09678 - Goat Anti-KCNN2 Antibody

Size: 100µg specific antibody in 200µl



Target Protein

Principal Names: KCNN2, potassium intermediate/small conductance calcium-activated channel, subfamily N, member 2, KCa2.2, SK2, SKCA2, hSK2, apamin-sensitive small-conductance Ca²⁺-activated potassium channel, small conductance calcium-activated potassium channel protein 2

Official Symbol: KCNN2

Accession Number(s): NP_067627.2; NP_740721.1

Human GeneID(s): [3781](#)

Non-Human GeneID(s): 140492 (mouse), 54262 (rat)

Important Comments: This antibody is expected to recognize both isoforms (NP_067627.2; NP_740721.1).

Immunogen

Peptide with sequence C-ESYDKHVTYNAER, from the internal region of the protein sequence according to NP_067627.2; NP_740721.1.

Please note the [peptide](#) is available for sale.

Purification and Storage

Purified from goat serum by ammonium sulphate precipitation followed by antigen affinity chromatography using the immunizing peptide.

Supplied at 0.5 mg/ml in Tris saline, 0.02% sodium azide, pH7.3 with 0.5% bovine serum albumin.

Aliquot and store at -20°C. Minimize freezing and thawing.

Applications Tested

Peptide ELISA: antibody detection limit dilution 1:64000.

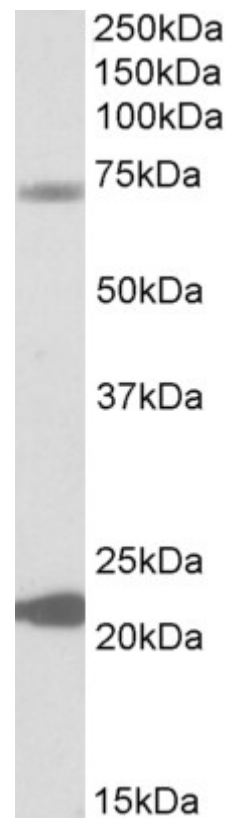
Western blot: Approx 70kDa and 23kDa bands observed in Human Liver lysates (calculated MW of 63.8kDa according to NP_067627.2 and of 26.3kDa according to NP_740721.1). Recommended concentration: 0.3-1µg/ml.

IHC: Paraffin embedded Human Thyroid Gland and Kidney. Recommended concentration: 3.75µg/ml.

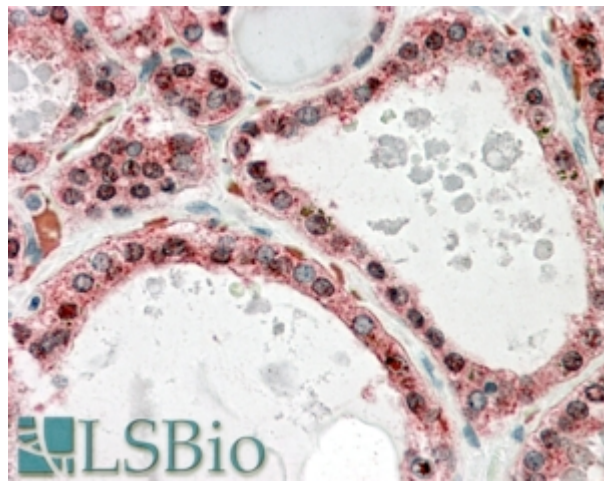
Species Reactivity

Tested: Human

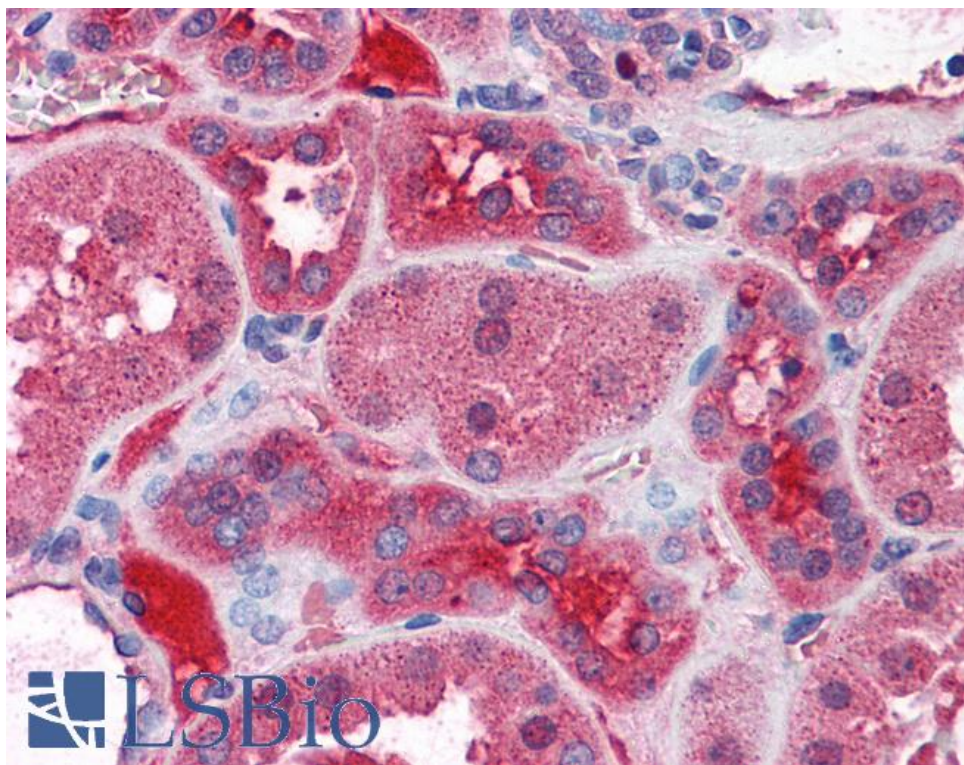
Expected from sequence similarity: Human, Mouse, Rat, Dog, Cow



EB09678 (0.3 μ g/ml) staining of Human Liver lysate (35 μ g protein in RIPA buffer). Primary incubation was 1 hour. Detected by chemiluminescence.



EB09678 (3.75 μ g/ml) staining of paraffin embedded Human Thyroid Gland. Steamed antigen retrieval with citrate buffer pH 6, AP-staining.



EB09678 (3.75µg/ml) staining of paraffin embedded Human Kidney. Steamed antigen retrieval with citrate buffer pH 6, AP-staining.