

UK Office

Everest Biotech Ltd

Cherwell Innovation Centre
77 Heyford Park
Upper Heyford
Oxfordshire
OX25 5HD
UK

Enquiries:

info@everestbiotech.com

Sales:

sales@everestbiotech.com

Tech support:

support@everestbiotech.com

Tel: +44 (0)1869 238326

www.everestbiotech.com

**Research Use Only. Not for
diagnostic or therapeutic use.**

EB10486 - Goat Anti-KCTD11 Antibody

Size: 100µg specific antibody in 200µl



Target Protein

Principal Names: C17orf36, MGC129844, potassium channel tetramerisation domain containing 11, potassium channel tetramerization domain containing 11, REN, REN/KCTD11, retinoic acid, EGF, NGF induced gene protein, retinoic acid, EGF, NGF induced gene/potassium chan, KCTD11

Official Symbol: KCTD11

Accession Number(s): NP_001002914.1

Human GeneID(s): [147040](#)

Non-Human GeneID(s): 216858 (mouse), 363634 (rat)

Immunogen

Peptide with sequence C-PEVEYGRGLQP, from the internal region of the protein sequence according to NP_001002914.1.

Please note the [peptide](#) is available for sale.

Purification and Storage

Purified from goat serum by ammonium sulphate precipitation followed by antigen affinity chromatography using the immunizing peptide.

Supplied at 0.5 mg/ml in Tris saline, 0.02% sodium azide, pH7.3 with 0.5% bovine serum albumin.

Aliquot and store at -20°C. Minimize freezing and thawing.

Applications Tested

Peptide ELISA: antibody detection limit dilution 1:16000.

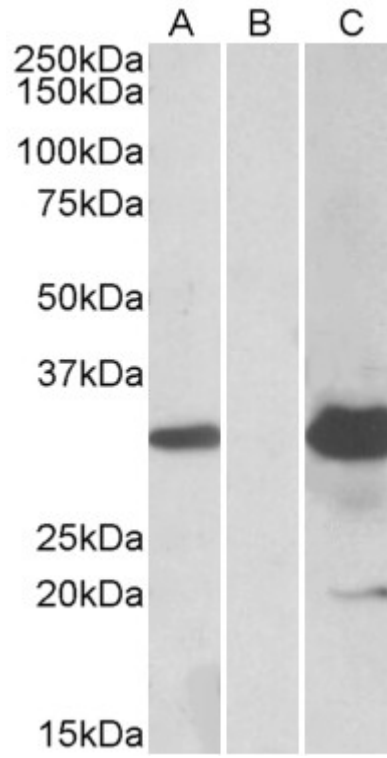
Western blot: In transfected HEK293 transiently expressing full-length Human KCTD11 (myc and DYKDDDDK tagged), a band of approx. 30kDa was observed. No bands were observed in mock-transfected HEK293 and the same band was observed using anti-DYKDDDDK tag antibody. Recommended concentration, 1-2µg/ml.

Purchase the +ve control! The transfected lysate used to QC this product is available for sale. Please email sales@everestbiotech.com to request datasheet, pricing and delivery information.

Species Reactivity

Tested: Human

Expected from sequence similarity: Human, Mouse, Rat, Dog, Cow



HEK293 lysate (10ug protein in RIPA buffer) overexpressing Human KCTD11 with DYKDDDDK tag probed with EB10486 (1.0ug/ml) in Lane A and probed with anti-DYKDDDDK Tag (1/5000) in lane C. Mock-transfected HEK293 probed with EB10486 (1mg/ml) in Lane B. Primary incubations were for 1 hour. Detected by chemiluminescence.