

## UK Office

### Everest Biotech Ltd

Cherwell Innovation Centre  
77 Heyford Park  
Upper Heyford  
Oxfordshire  
OX25 5HD  
UK

Enquiries:

[info@everestbiotech.com](mailto:info@everestbiotech.com)

Sales:

[sales@everestbiotech.com](mailto:sales@everestbiotech.com)

Tech support:

[support@everestbiotech.com](mailto:support@everestbiotech.com)

Tel: +44 (0)1869 238326

[www.everestbiotech.com](http://www.everestbiotech.com)

**Research Use Only. Not for  
diagnostic or therapeutic use.**

## EB10963 - Goat Anti-KEAP1 (aa41-53) Antibody

Size: 100µg specific antibody in 200µl



### Target Protein

**Principal Names:** KEAP1, kelch-like ECH-associated protein 1, INrf2, KIAA0132, KLHL19, MGC10630, MGC1114, MGC20887, MGC4407, cytosolic inhibitor of Nrf2, kelch-like protein 19

**Official Symbol:** KEAP1

**Accession Number(s):** NP\_036421.2

**Human GeneID(s):** [9817](#)

**Non-Human GeneID(s):** 50868 (mouse), 117519 (rat)

**Important Comments:** Reported variants represent identical protein: NP\_036421.2, NP\_987096.1

### Immunogen

Peptide with sequence C-EVTPSQHGHNRTFS, from the internal region (near N Terminus) of the protein sequence according to NP\_036421.2.

Please note the [peptide](#) is available for sale.

### Purification and Storage

Purified from goat serum by ammonium sulphate precipitation followed by antigen affinity chromatography using the immunizing peptide.

Supplied at 0.5 mg/ml in Tris saline, 0.02% sodium azide, pH7.3 with 0.5% bovine serum albumin.

Aliquot and store at -20°C. Minimize freezing and thawing.

### Applications Tested

**Peptide ELISA:** antibody detection limit dilution 1:32000.

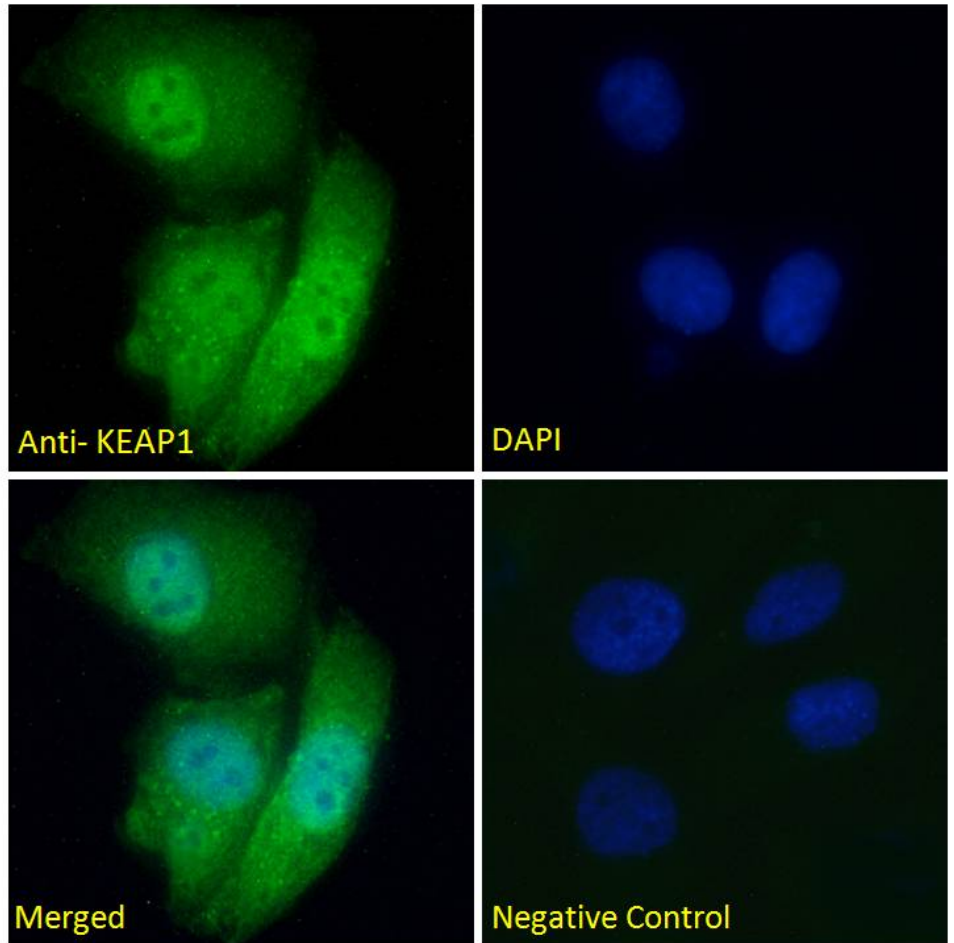
**IHC:** In paraffin embedded Human Cerebellum shows textured cytoplasm staining in Purkinje cell and processes. Recommended concentration: 3-5µg/ml.

**Immunofluorescence:** Strong expression of the protein seen in the nucleus and cytoplasm of HeLa cells. Recommended concentration: 5µg/ml.

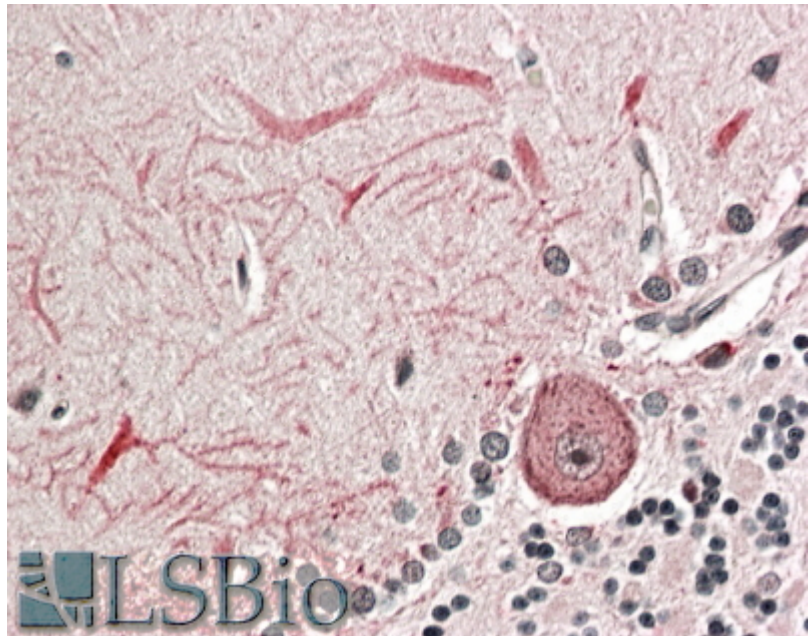
### Species Reactivity

**Tested:** Human

**Expected from sequence similarity:** Human, Mouse, Rat, Dog, Pig, Cow



EB10963 Immunofluorescence analysis of paraformaldehyde fixed HeLa cells, permeabilized with 0.15% Triton. Primary incubation 1hr (5ug/ml) followed by Alexa Fluor 488 secondary antibody (2ug/ml), showing nuclear and cytoplasmic staining. The nuclear stain is DAPI (blue). Negative control: Unimmunized goat IgG (5ug/ml) followed by Alexa Fluor 488 secondary antibody (2ug/ml).



EB10963 (3.8µg/ml) staining of paraffin embedded Human Cerebellum. Steamed antigen retrieval with citrate buffer pH 6, AP-staining.