



UK Office

Everest Biotech Ltd

Cherwell Innovation Centre
77 Heyford Park
Upper Heyford
Oxfordshire
OX25 5HD
UK

Enquiries:

info@everestbiotech.com

Sales:

sales@everestbiotech.com

Tech support:

support@everestbiotech.com

Tel: +44 (0)1869 238326

Fax: +44 (0)1869 238327

US Office

Everest Biotech c/o Abcore

405 Maple Street, Suite A106
Ramona,
CA 92065
USA

Inquiries:

info@everestbiotech.com

Sales:

usasales@everestbiotech.com

Tech support:

support@everestbiotech.com

Tel: 888-320-4628 (toll-free)

Fax: 888-841-9041

www.everestbiotech.com

**Research Use Only. Not for
diagnostic or therapeutic use.**

EB05480 - Goat Anti-KIF4A Antibody

Size: 100µg specific antibody in 200µl



Target Protein

Principal Names: KIF4A, kinesin family member 4A, FLJ12530, FLJ12655, FLJ14204, FLJ20631, HSA271784, KIF4, KIF4-G1, chromokinesin, kinesin family member 4

Official Symbol: KIF4A

Accession Number(s): NP_036442.3

Human GeneID(s): [24137](#)

Immunogen

Peptide with sequence SFFSGCSPIEEAAH, from the C Terminus of the protein sequence according to NP_036442.3.

Please note the [peptide](#) is available for sale.

Purification and Storage

Purified from goat serum by ammonium sulphate precipitation followed by antigen affinity chromatography using the immunizing peptide.

Supplied at 0.5 mg/ml in Tris saline, 0.02% sodium azide, pH7.3 with 0.5% bovine serum albumin.

Aliquot and store at -20°C. Minimize freezing and thawing.

Applications Tested

Peptide ELISA: antibody detection limit dilution 1:64000.

Western blot: Approx 150kDa band observed in nuclear lysates of cell line NIH3T3 (calculated MW of 139.5kDa according to Mouse NP_032472.2). Recommended concentration: 1-2µg/ml. Primary incubation 1 hour at room temperature. **Negative**

Control: Human Ovary lysate.

Immunofluorescence: Strong expression of the protein seen in the nuclei of U2OS cells. Recommended concentration: 10µg/ml.

Flow Cytometry: Flow cytometric analysis of HEK293 cells. Recommended concentration: 10ug/ml.

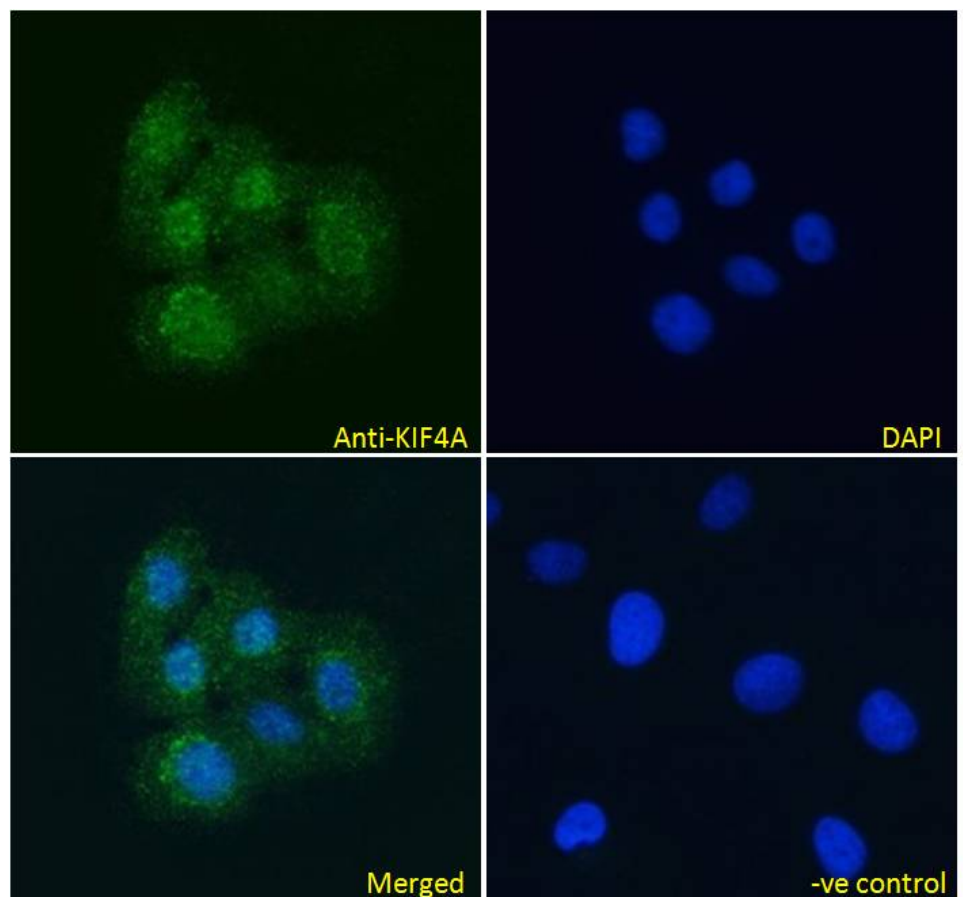
Species Reactivity

Tested: Human, Mouse

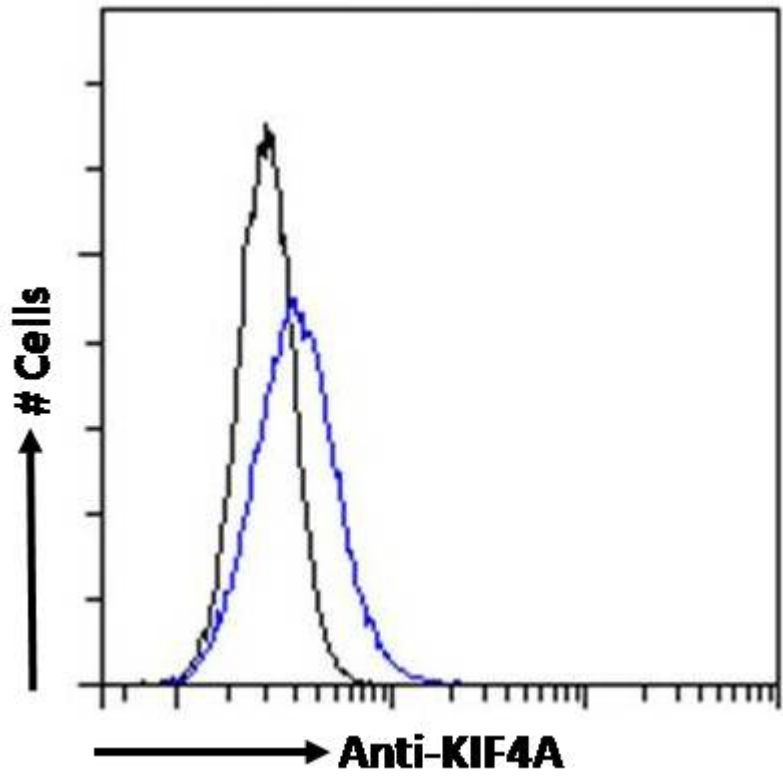
Expected from sequence similarity: Human, Mouse, Rat, Pig, Cow



EB05480 (2 μ g/ml) staining of nuclear NIH3T3 (A) and (2 μ g/ml) negative control Human Ovary (B) lysate. (35 μ g protein in RIPA buffer) Detected by chemiluminescence.



EB05480 Immunofluorescence analysis of paraformaldehyde fixed U2OS cells, permeabilized with 0.15% Triton. Primary incubation 1hr (10 μ g/ml) followed by Alexa Fluor 488 secondary antibody (4 μ g/ml), showing nuclear staining. The nuclear stain is DAPI (blue). Negative control: Unimmunized goat IgG (10 μ g/ml) followed by Alexa Fluor 488 secondary antibody (4 μ g/ml).



EB05480 Flow cytometric analysis of paraformaldehyde fixed HEK293 cells (blue line), permeabilized with 0.5% Triton. Primary incubation 1hr (10ug/ml) followed by Alexa Fluor 488 secondary antibody (4ug/ml). IgG control: Unimmunized goat IgG (black line) followed by Alexa Fluor 488 secondary antibody.