



UK Office

Everest Biotech Ltd

Cherwell Innovation Centre
77 Heyford Park
Upper Heyford
Oxfordshire
OX25 5HD
UK

Enquiries:

info@everestbiotech.com

Sales:

sales@everestbiotech.com

Tech support:

support@everestbiotech.com

Tel: +44 (0)1869 238326

www.everestbiotech.com

**Research Use Only. Not for
diagnostic or therapeutic use.**

EB12269 - Goat Anti-kininogen 1 Antibody

Size: 100µg specific antibody in 200µl



Target Protein

Principal Names: KNG1, kininogen 1, BDK, KNG, HMWK, alpha-2-thiol proteinase inhibitor, bradykinin, fitzgerald factor, high molecular weight kininogen, kininogen-1, williams-Fitzgerald-Flaujeac factor

Official Symbol: KNG1

Accession Number(s): NP_001095886.1; NP_000884.1; NP_001159923.1

Human GeneID(s): [3827](#)

Important Comments: This antibody is expected to recognize all reported isoforms (NP_001095886.1; NP_000884.1; NP_001159923.1).

Immunogen

Peptide with sequence C-RITEATKTVGSDT, from the internal region (near N terminus) of the protein sequence according to NP_001095886.1; NP_000884.1; NP_001159923.1.

Please note the [peptide](#) is available for sale.

Purification and Storage

Purified from goat serum by ammonium sulphate precipitation followed by antigen affinity chromatography using the immunizing peptide.

Supplied at 0.5 mg/ml in Tris saline, 0.02% sodium azide, pH7.3 with 0.5% bovine serum albumin.

Aliquot and store at -20°C. Minimize freezing and thawing.

Applications Tested

Peptide ELISA: antibody detection limit dilution 1:128000.

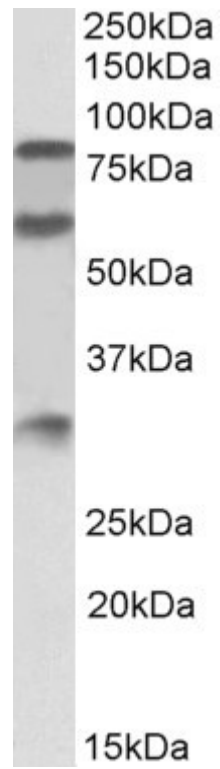
Western blot: Approx 80+60+30kDa bands observed in Human Kidney lysates (calculated MW of 72.0kDa according to NP_001095886.1). The observed MW bands are explained by glycosylation and the splitting into heavy and light chains from the precursor protein. Recommended concentration: 0.3-1µg/ml. Primary incubation was 1 hour.

IHC: Paraffin embedded Human Liver. Recommended concentration: 5µg/ml.

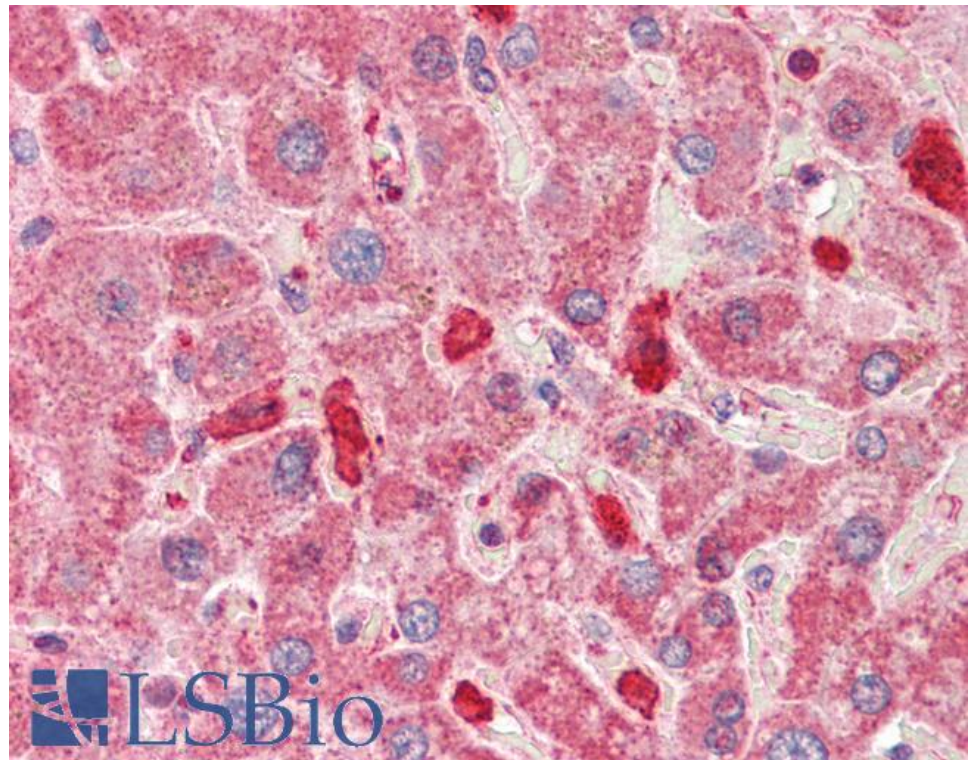
Species Reactivity

Tested: Human

Expected from sequence similarity: Human



EB12269 (0.3 μ g/ml) staining of Human Kidney lysate (35 μ g protein in RIPA buffer). Detected by chemiluminescence.



EB12269 (5 μ g/ml) staining of paraffin embedded Human Liver. Steamed antigen retrieval with citrate buffer pH 6, AP-staining.