



Everest Biotech Ltd
Cherwell Innovation Centre
77 Heyford Park
Upper Heyford
Oxfordshire
OX25 5HD, United Kingdom

everestbiotech.com

sales@everestbiotech.com

support@everestbiotech.com

Tel +44 1869 238326

Fax +44 1869 238327

**Research Use Only. Not for
diagnostic or therapeutic use.**

Storage: For long-term storage
keep aliquots at -20°C. (Store no
longer than 12 months at 4°C).
Minimize freezing and thawing.

EB07131 - Goat Anti-KIP1 / CDKN1B (internal) Antibody

Size: 100µg specific antibody in 200µl



Target Protein

Principal Names: cyclin-dependent kinase inhibitor 1B, P27KIP1, CDKN4,
cyclin-dependent kinase inhibitor 1B (p27, Kip1), KIP1, CDKN1B

Official Symbol: CDKN1B

Accession Number(s): NP_004055.1

Human GeneID(s): [1027](#)

Immunogen

Peptide with sequence C-KRPATDDSSQNK, from the internal region of the protein
sequence according to NP_004055.1.

Please note the [peptide](#) is available for sale.

Purification and Storage

Purified from goat serum by ammonium sulphate precipitation followed by antigen affinity
chromatography using the immunizing peptide.

Supplied at 0.5 mg/ml in Tris saline, 0.02% sodium azide, pH7.3 with 0.5% bovine serum
albumin.

Aliquot and store at -20°C. Minimize freezing and thawing.

Applications Tested

Peptide ELISA: antibody detection limit dilution 1:32000.

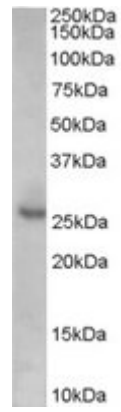
Western blot: Approx 26kDa band observed in lysates of Human Prostate and of
Hepatoblastoma cell line HepG2 (calculated MW of 22.1kDa according to NP_004055.1).
The observed molecular weight corresponds to earlier findings in literature with different
antibodies (Xia et al, Proc Natl Acad Sci U S A. 2005 Sep 27;102(39):14028-33; PMID:
16169901). Recommended concentration: 0.1-0.3µg/ml.

IHC: In paraffin embedded Human Prostate shows nuclear staining of secretory cells.
Recommended concentration, 5-10µg/ml.

Species Reactivity

Tested: Human

Expected from sequence similarity: Human, Mouse, Rat, Cat, Dog, Pig, Cow



EB07131 (0.1µg/ml) staining of Human Prostate lysate (35µg protein in RIPA buffer). Primary incubation was 1 hour. Detected by chemiluminescence.



EB07131 (5µg/ml) staining of paraffin embedded Human Prostate. Steamed antigen retrieval with citrate buffer pH 6, AP-staining.