



UK Office

Everest Biotech Ltd

Cherwell Innovation Centre
77 Heyford Park
Upper Heyford
Oxfordshire
OX25 5HD
UK

Enquiries:

info@everestbiotech.com

Sales:

sales@everestbiotech.com

Tech support:

support@everestbiotech.com

Tel: +44 (0)1869 238326

Fax: +44 (0)1869 238327

US Office

Everest Biotech c/o Abcore

405 Maple Street, Suite A106
Ramona,
CA 92065
USA

Inquiries:

info@everestbiotech.com

Sales:

usasales@everestbiotech.com

Tech support:

support@everestbiotech.com

Tel: 888-320-4628 (toll-free)

Fax: 888-841-9041

www.everestbiotech.com

**Research Use Only. Not for
diagnostic or therapeutic use.**

EB12145 - Goat Anti-KIT / CD117 Antibody

Size: 100µg specific antibody in 200µl



Target Protein

Principal Names: KIT, v-kit Hardy-Zuckerman 4 feline sarcoma viral oncogene homolog, C-Kit, CD117, PBT, SCFR, mast/stem cell growth factor receptor Kit, p145 c-kit, piebald trait protein, proto-oncogene c-Kit, proto-oncogene tyrosine-protein kinase Kit, soluble KIT varian

Official Symbol: KIT

Accession Number(s): NP_000213.1; NP_001087241.1

Human GeneID(s): [3815](#)

Important Comments: This antibody is expected to recognize both reported isoforms (NP_000213.1; NP_001087241.1).

Immunogen

Peptide with sequence KRDSFICKQEDH, from the internal region of the protein sequence according to NP_000213.1; NP_001087241.1.

Please note the [peptide](#) is available for sale.

Purification and Storage

Purified from goat serum by ammonium sulphate precipitation followed by antigen affinity chromatography using the immunizing peptide.

Supplied at 0.5 mg/ml in Tris saline, 0.02% sodium azide, pH7.3 with 0.5% bovine serum albumin.

Aliquot and store at -20°C. Minimize freezing and thawing.

Applications Tested

Peptide ELISA: antibody detection limit dilution 1:128000.

Western blot: Approx 110kDa band observed in Human Brain (Hippocampus) lysates (calculated MW of 110kDa according to NP_000213.1). An additional band of unknown identity was also consistently observed at 35kDa. This band was successfully blocked by incubation with the immunizing peptide. Recommended concentration: 1-3µg/ml. Primary incubation 1 hour at room temperature.

IHC: Paraffin embedded Human Prostate. Recommended concentration: 10µg/ml.

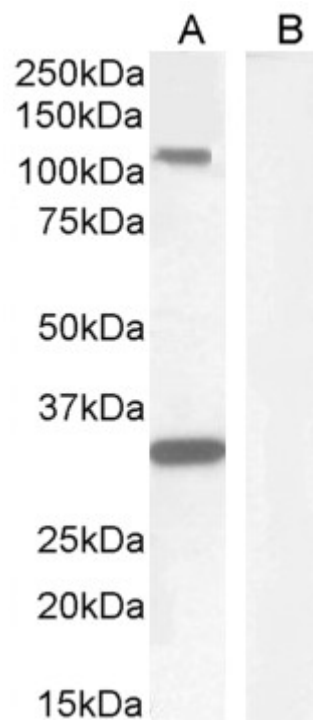
Immunofluorescence: Strong expression of the protein seen in the cytoplasm/membranes of HEK293 and HeLa cells. Recommended concentration: 10µg/ml.

Flow Cytometry: Flow cytometric analysis of MCF7 cells. Recommended concentration: 10ug/ml.

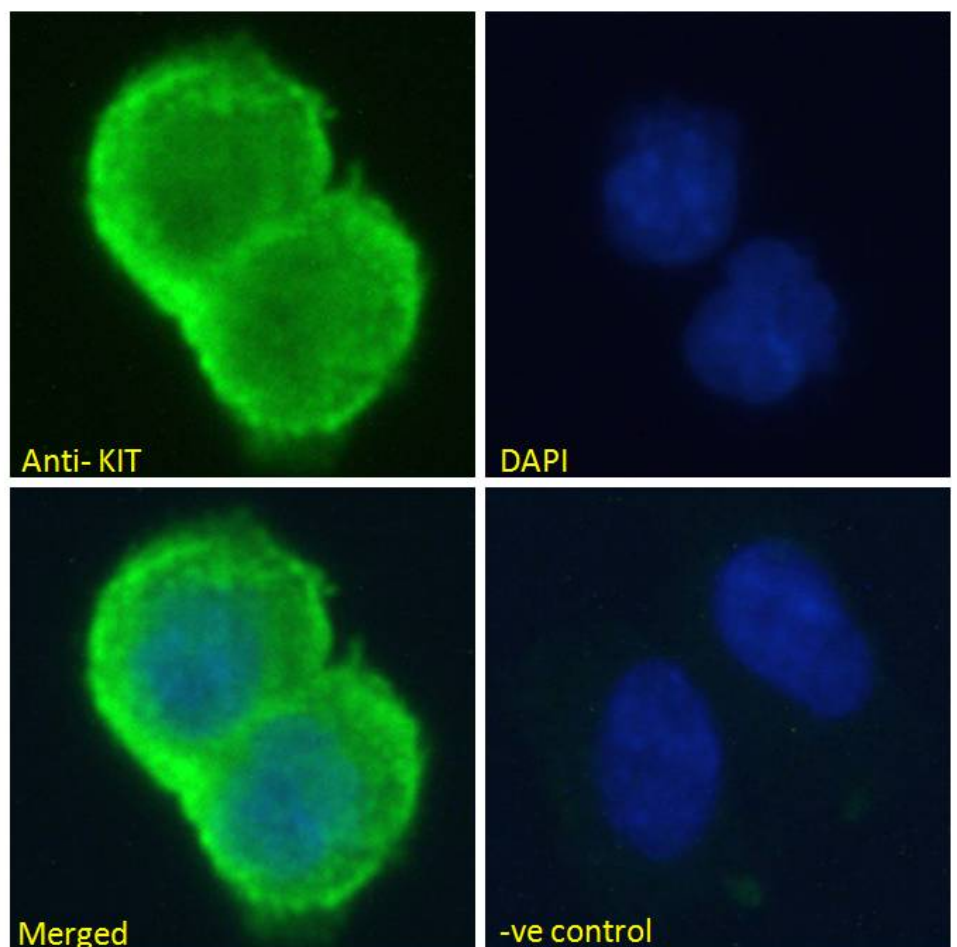
Species Reactivity

Tested: Human

Expected from sequence similarity: Human, Dog, Pig, Cow

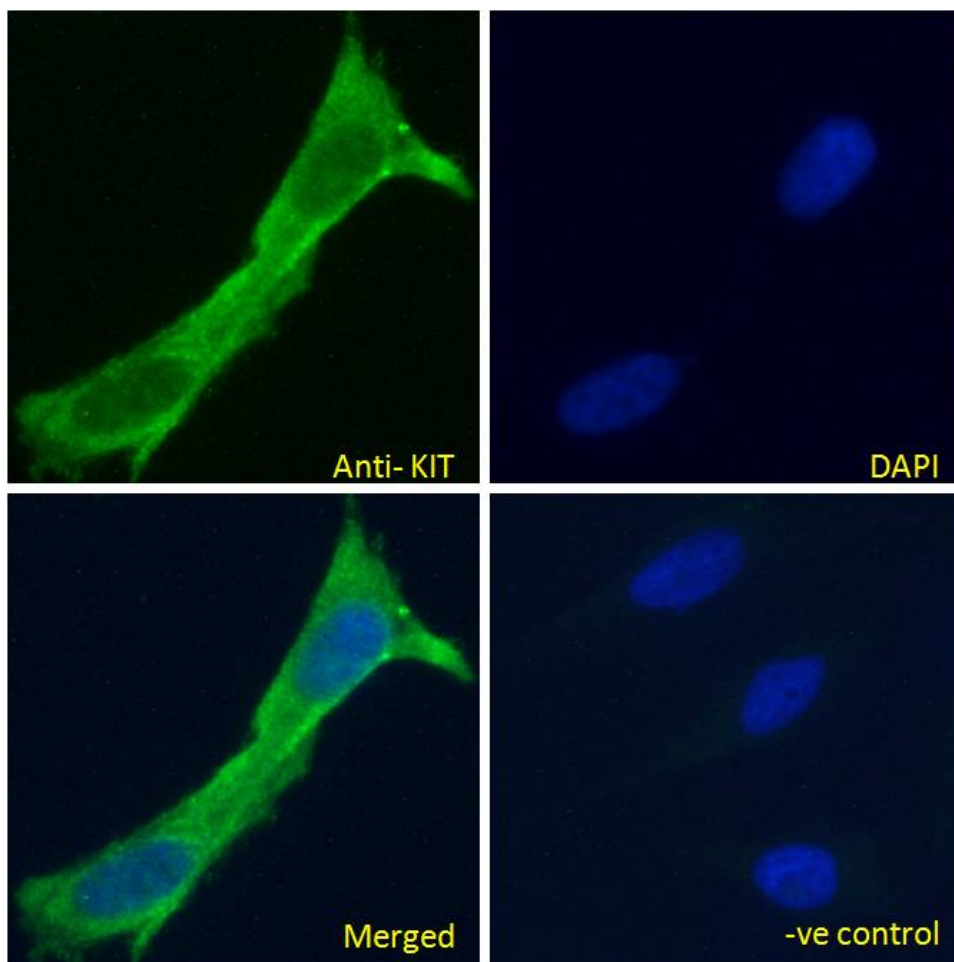


EB12145 (1 μ g/ml) staining of Human Hippocampus lysate (A) + peptide (B) (35 μ g protein in RIPA buffer).
Detected by chemiluminescence.

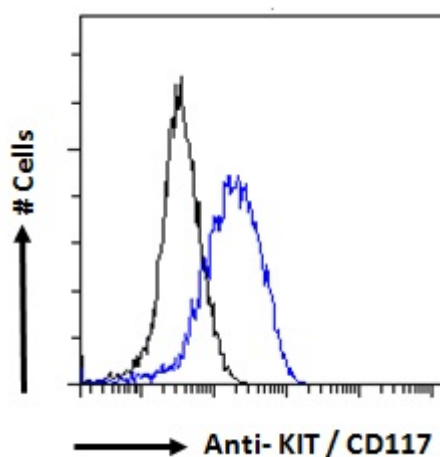


EB12145 Immunofluorescence analysis of paraformaldehyde fixed HEK293 cells, permeabilized with 0.15% Triton. Primary incubation 1hr (10 μ g/ml) followed by Alexa Fluor 488 secondary antibody (2 μ g/ml), showing cytoplasmic/membrane staining. The nuclear stain is DAPI (blue). Negative control: Unimmunized goat IgG

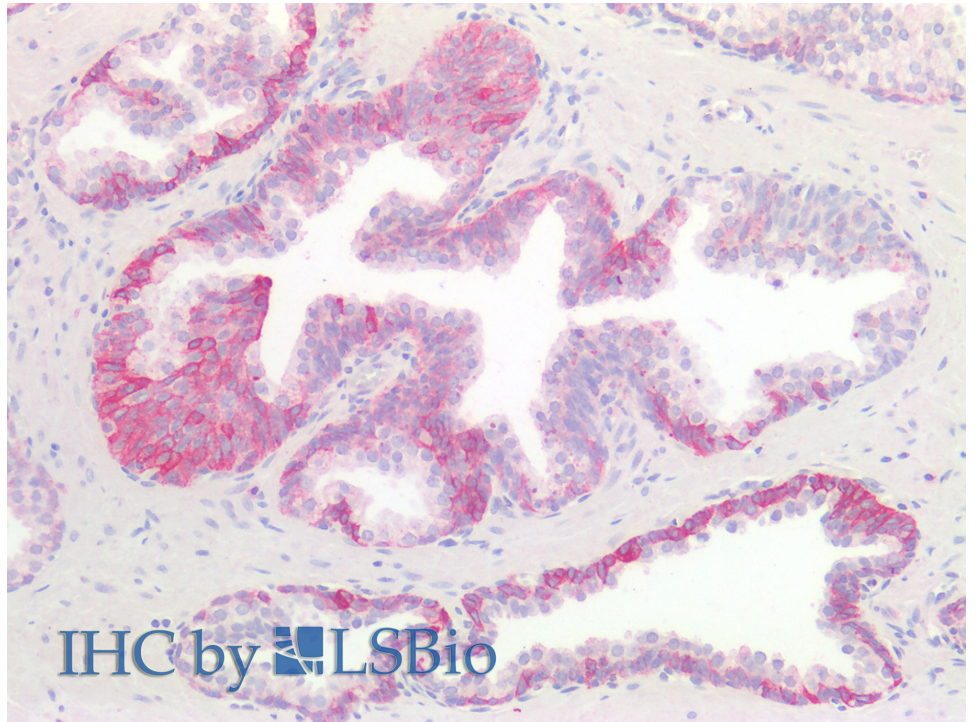
(10ug/ml) followed by Alexa Fluor 488 secondary antibody (2ug/ml).



EB12145 Immunofluorescence analysis of paraformaldehyde fixed HeLa cells, permeabilized with 0.15% Triton. Primary incubation 1hr (10ug/ml) followed by Alexa Fluor 488 secondary antibody (2ug/ml), showing cytoplasmic/membrane staining. The nuclear stain is DAPI (blue). Negative control: Unimmunized goat IgG (10ug/ml) followed by Alexa Fluor 488 secondary antibody (2ug/ml).



EB12145 Flow cytometric analysis of paraformaldehyde fixed MCF7 cells (blue line), permeabilized with 0.5% Triton. Primary incubation 1hr (10ug/ml) followed by Alexa Fluor 488 secondary antibody (1ug/ml). IgG control: Unimmunized goat IgG (black line) followed by Alexa Fluor 488 secondary antibody.



EB12145 (10µg/ml) staining of paraffin embedded Human Prostate. Steamed antigen retrieval with citrate buffer pH 6, AP-staining.