



UK Office

Everest Biotech Ltd

Cherwell Innovation Centre
77 Heyford Park
Upper Heyford
Oxfordshire
OX25 5HD
UK

Enquiries:

info@everestbiotech.com

Sales:

sales@everestbiotech.com

Tech support:

support@everestbiotech.com

Tel: +44 (0)1869 238326

Fax: +44 (0)1869 238327

US Office

Everest Biotech c/o Abcore

405 Maple Street, Suite A106
Ramona,
CA 92065
USA

Inquiries:

info@everestbiotech.com

Sales:

usasales@everestbiotech.com

Tech support:

support@everestbiotech.com

Tel: 888-320-4628 (toll-free)

Fax: 888-841-9041

www.everestbiotech.com

**Research Use Only. Not for
diagnostic or therapeutic use.**

EB05463 - Goat Anti-KLF15 Antibody

Size: 100µg specific antibody in 200µl



Target Protein

Principal Names: KLF15, KKLf, Kruppel-like factor 15, KKLf protein, kidney-enriched Kruppel-like factor, DKFZp779M1320

Official Symbol: KLF15

Accession Number(s): NP_054798.1

Human GeneID(s): [28999](#)

Non-Human GeneID(s): 66277 (mouse), 85497 (rat)

Immunogen

Peptide with sequence VDHLLPVDFNFSS-C, from the N Terminus of the protein sequence according to NP_054798.1.

Please note the [peptide](#) is available for sale.

Purification and Storage

Purified from goat serum by ammonium sulphate precipitation followed by antigen affinity chromatography using the immunizing peptide.

Supplied at 0.5 mg/ml in Tris saline, 0.02% sodium azide, pH7.3 with 0.5% bovine serum albumin.

Aliquot and store at -20°C. Minimize freezing and thawing.

Applications Tested

Peptide ELISA: antibody detection limit dilution 1:64000.

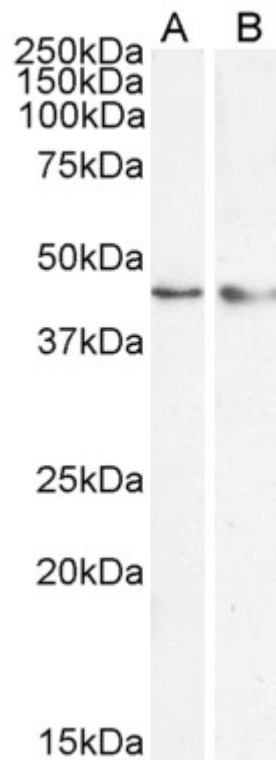
Western blot: Approx 45kDa band observed in HeLa and in nuclear cell lysates of HepG2 (calculated MW of 44kDa according to NP_054798.1). Recommended concentration: 0.3-1µg/ml. Primary incubation 1 hour at room temperature. Preliminary testing was unsuccessful on Rat, Mouse and Pig Kidney, and NIH3T3 for this particular batch.

Flow Cytometry: Flow cytometric analysis of HepG2 cells. Recommended concentration: 10ug/ml.

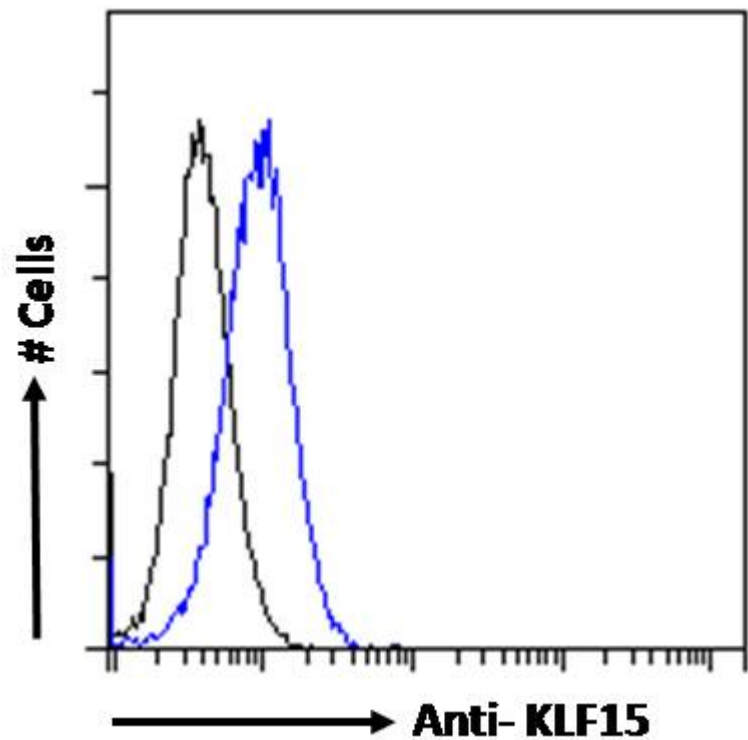
Species Reactivity

Tested: Human

Expected from sequence similarity: Human, Mouse, Rat, Pig



EB05463 (1 μ g/ml) staining of nuclear HepG2 (A) and (0.5 μ g/ml) HeLa (B) cell lysate (35 μ g protein in RIPA buffer). Detected by chemiluminescence.



EB05463 Flow cytometric analysis of paraformaldehyde fixed HepG2 cells (blue line), permeabilized with 0.5% Triton. Primary incubation 1hr (10 μ g/ml) followed by Alexa Fluor 488 secondary antibody (1 μ g/ml). IgG control: Unimmunized goat IgG (black line) followed by Alexa Fluor 488 secondary antibody.