



UK Office

Everest Biotech Ltd

Cherwell Innovation Centre
77 Heyford Park
Upper Heyford
Oxfordshire
OX25 5HD
UK

Enquiries:

info@everestbiotech.com

Sales:

sales@everestbiotech.com

Tech support:

support@everestbiotech.com

Tel: +44 (0)1869 238326

Fax: +44 (0)1869 238327

US Office

Everest Biotech c/o Abcore

405 Maple Street, Suite A106
Ramona,
CA 92065
USA

Inquiries:

info@everestbiotech.com

Sales:

usasales@everestbiotech.com

Tech support:

support@everestbiotech.com

Tel: 888-320-4628 (toll-free)

Fax: 888-841-9041

www.everestbiotech.com

**Research Use Only. Not for
diagnostic or therapeutic use.**

EB10533 - Goat Anti-KLHDC8B Antibody

Size: 100µg specific antibody in 200µl



Target Protein

Principal Names: FLJ11302, kelch domain containing 8B, kelch domain-containing protein 8B, MGC35097, KLHDC8B

Official Symbol: KLHDC8B

Accession Number(s): NP_775817.1

Human GeneID(s): [200942](#)

Non-Human GeneID(s): 78267 (mouse), 306589 (rat)

Immunogen

Peptide with sequence C-TKLPRSLRMRDK, from the internal region of the protein sequence according to NP_775817.1.

Please note the [peptide](#) is available for sale.

Purification and Storage

Purified from goat serum by ammonium sulphate precipitation followed by antigen affinity chromatography using the immunizing peptide.

Supplied at 0.5 mg/ml in Tris saline, 0.02% sodium azide, pH7.3 with 0.5% bovine serum albumin.

Aliquot and store at -20°C. Minimize freezing and thawing.

Applications Tested

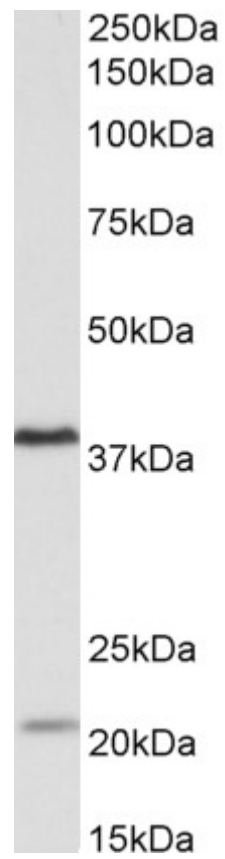
Peptide ELISA: antibody detection limit dilution 1:64000.

Western blot: Approx 38kDa band observed in lysates of cell lines Daudi, Jurkat and NIH3T3 (calculated MW of 37.7kDa according to NP_775817.1). Recommended concentration: 0.5-2µg/ml. An additional band of unknown identity was also consistently observed at 22kDa. This band was successfully blocked by incubation with the immunizing peptide. We would appreciate any feedback from people in the field - have any such results been reported with other antibodies/lysates? Have any further splice variants/modified forms been reported?

Species Reactivity

Tested: Human, Mouse

Expected from sequence similarity: Human, Mouse, Rat, Dog, Cow



EB10533 (0.5 μ g/ml) staining of Daudi lysate (35 μ g protein in RIPA buffer). Primary incubation was 1 hour.
Detected by chemiluminescence.