



UK Office

Everest Biotech Ltd

Cherwell Innovation Centre
77 Heyford Park
Upper Heyford
Oxfordshire
OX25 5HD
UK

Enquiries:

info@everestbiotech.com

Sales:

sales@everestbiotech.com

Tech support:

support@everestbiotech.com

Tel: +44 (0)1869 238326

Fax: +44 (0)1869 238327

US Office

Everest Biotech c/o Abcore

405 Maple Street, Suite A106
Ramona,
CA 92065
USA

Inquiries:

info@everestbiotech.com

Sales:

usasales@everestbiotech.com

Tech support:

support@everestbiotech.com

Tel: 888-320-4628 (toll-free)

Fax: 888-841-9041

www.everestbiotech.com

**Research Use Only. Not for
diagnostic or therapeutic use.**

EB09707 - Goat Anti-KLHL6 / Kelch-like 6 Antibody

Size: 100µg specific antibody in 200µl



Target Protein

Principal Names: KLHL6, kelch-like 6 (Drosophila), FLJ00029, kelch-like 6, kelch-like protein KLHL6

Official Symbol: KLHL6

Accession Number(s): NP_569713.2

Human GeneID(s): [89857](#)

Non-Human GeneID(s): 239743 (mouse), 287974 (rat)

Immunogen

Peptide with sequence C-SERTKPRMHEFQSE, from the internal region of the protein sequence according to NP_569713.2.

Please note the [peptide](#) is available for sale.

Purification and Storage

Purified from goat serum by ammonium sulphate precipitation followed by antigen affinity chromatography using the immunizing peptide.

Supplied at 0.5 mg/ml in Tris saline, 0.02% sodium azide, pH7.3 with 0.5% bovine serum albumin.

Aliquot and store at -20°C. Minimize freezing and thawing.

Applications Tested

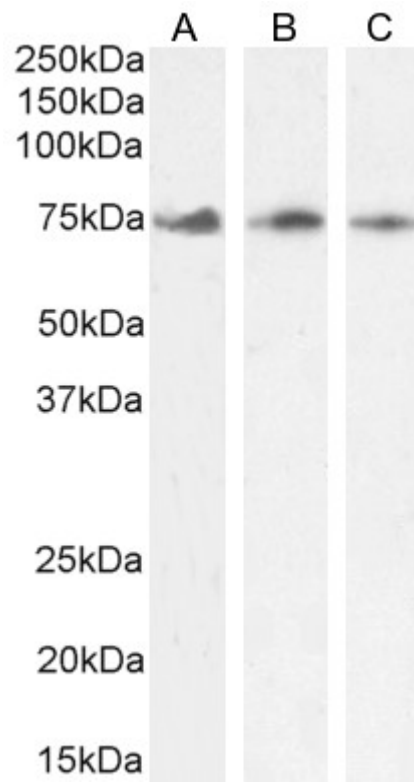
Peptide ELISA: antibody detection limit dilution 1:64000.

Western blot: Approx 75kDa band observed in Human, Mouse and Rat Kidney lysates (calculated MW of 70.4kDa according to Human NP_569713.2 and 70.2kDa according to Mouse NP_899246.2 and Rat NP_001099337.1). Recommended concentration: 1-3µg/ml. Primary incubation was 1 hour.

Species Reactivity

Tested: Human, Mouse, Rat

Expected from sequence similarity: Human, Mouse, Rat, Dog, Cow



EB09707 (1 µg/ml) staining of Human (A), Mouse (B) and Rat (C) Kidney lysate (35 µg protein in RIPA buffer).
Detected by chemiluminescence.