



UK Office

Everest Biotech Ltd

Cherwell Innovation Centre
77 Heyford Park
Upper Heyford
Oxfordshire
OX25 5HD
UK

Enquiries:

info@everestbiotech.com

Sales:

sales@everestbiotech.com

Tech support:

support@everestbiotech.com

Tel: +44 (0)1869 238326

www.everestbiotech.com

**Research Use Only. Not for
diagnostic or therapeutic use.**

EB07676 - Goat Anti-KLK5 Antibody

Size: 100µg specific antibody in 200µl



Target Protein

Principal Names: KLK5, kallikrein-related peptidase 5, KLK-L2, KLKL2, SCTE, kallikrein 5, kallikrein-like protein 2, stratum corneum tryptic enzyme

Official Symbol: KLK5

Accession Number(s): NP_036559.1

Human GeneID(s): [25818](#)

Important Comments: Reported variants represent identical protein (NP_036559.1; NP_001070959.1; NP_001070960.1).

Immunogen

Peptide with sequence KAGRDSCQGD, from the internal region of the protein sequence according to NP_036559.1.

Please note the [peptide](#) is available for sale.

Purification and Storage

Purified from goat serum by ammonium sulphate precipitation followed by antigen affinity chromatography using the immunizing peptide.

Supplied at 0.5 mg/ml in Tris saline, 0.02% sodium azide, pH7.3 with 0.5% bovine serum albumin.

Aliquot and store at -20°C. Minimize freezing and thawing.

Applications Tested

Peptide ELISA: antibody detection limit dilution 1:1000.

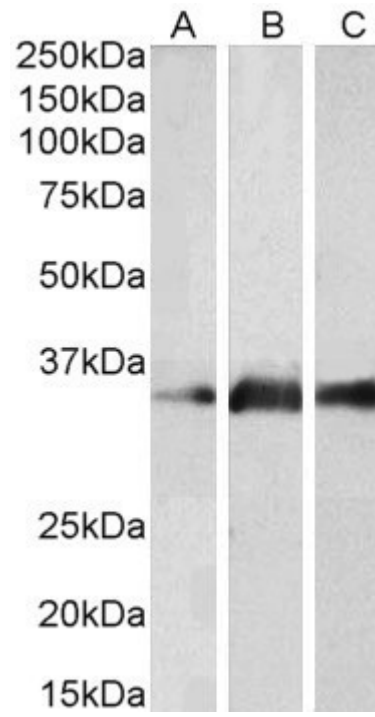
Western blot: Approx 35kDa band observed in Human Brain (Cerebellum), Mouse Brain and Rat Brain lysates (calculated MW of 32.0kDa according to NP_036559.1).

Recommended concentration: 1-3µg/ml.

Species Reactivity

Tested: Human, Mouse, Rat

Expected from sequence similarity: Human; Rat, Dog, Cow



EB07676 (2 μ g/ml) staining of Human Brain (Cerebellum) (A), Mouse Brain (B) and Rat Brain (C) lysates (35 μ g protein in RIPA buffer). Primary incubation was 1 hour. Detected by chemiluminescence.