



Everest Biotech Ltd  
Cherwell Innovation Centre  
77 Heyford Park  
Upper Heyford  
Oxfordshire  
OX25 5HD, United Kingdom

[everestbiotech.com](http://everestbiotech.com)

[sales@everestbiotech.com](mailto:sales@everestbiotech.com)

[support@everestbiotech.com](mailto:support@everestbiotech.com)

Tel +44 1869 238326

Fax +44 1869 238327

**Research Use Only. Not for diagnostic or therapeutic use.**

Storage: For long-term storage keep aliquots at -20°C. (Store no longer than 12 months at 4°C). Minimize freezing and thawing.

## EB06233 - Goat Anti-KPNA2 / IPOA1 Antibody

Size: 100µg specific antibody in 200µl



### Target Protein

**Principal Names:** pendulin, karyopherin alpha 2, importin-alpha-P1, importin alpha 2, importin alpha 1, RAG cohort 1, karyopherin alpha 2 (RAG cohort 1, importin alpha 1), SRP1alpha, RCH1, IPOA1 QIP2, KPNA2

**Official Symbol:** KPNA2

**Accession Number(s):** NP\_002257.1

**Human GeneID(s):** [3838](#)

**Non-Human GeneID(s):** 16647 (mouse), 85245 (rat)

### Immunogen

Peptide with sequence C-QVQDGAPGTFNF, from the C Terminus of the protein sequence according to NP\_002257.1.

Please note the [peptide](#) is available for sale.

### Purification and Storage

Purified from goat serum by ammonium sulphate precipitation followed by antigen affinity chromatography using the immunizing peptide.

Supplied at 0.5 mg/ml in Tris saline, 0.02% sodium azide, pH7.3 with 0.5% bovine serum albumin.

Aliquot and store at -20°C. Minimize freezing and thawing.

### Applications Tested

**Peptide ELISA:** antibody detection limit dilution 1:32000.

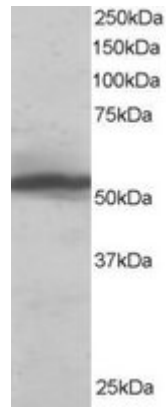
**Western blot:** Approx 55-60kDa band observed in HeLa lysates (predicted size of approx. 58kDa according to NP\_002257.1). Recommended for use at 0.1-0.5µg/ml

**Immunofluorescence:** In 4% formaldehyde-fixed HeLa staining is mostly cytoplasmic, with some nuclear staining and clear nuclear pore staining.

### Species Reactivity

**Tested:** Human

**Expected from sequence similarity:** Human, Mouse, Rat, Dog



EB06233 staining (0.1µg/ml) of HeLa lysate (RIPA buffer, 35µg total protein per lane). Primary incubated for 1 hour. Detected by western blot using chemiluminescence.



EB06233 staining (top panel and green) of 4% formaldehyde-fixed HeLa with endogenously expressed HistoneH2B-GFP fusion as DNA marker (mid panel and red). Data kindly provided by Francisco Iborra, MRC Mol. Haematol. Unit, Oxford.