



UK Office

Everest Biotech Ltd

Cherwell Innovation Centre
77 Heyford Park
Upper Heyford
Oxfordshire
OX25 5HD
UK

Enquiries:

info@everestbiotech.com

Sales:

sales@everestbiotech.com

Tech support:

support@everestbiotech.com

Tel: +44 (0)1869 238326

Fax: +44 (0)1869 238327

US Office

Everest Biotech c/o Abcore

405 Maple Street, Suite A106
Ramona,
CA 92065
USA

Inquiries:

info@everestbiotech.com

Sales:

usasales@everestbiotech.com

Tech support:

support@everestbiotech.com

Tel: 888-320-4628 (toll-free)

Fax: 888-841-9041

www.everestbiotech.com

**Research Use Only. Not for
diagnostic or therapeutic use.**

EB06237-B - Goat Anti-KPNA3 / IPOA4, Biotinylated Antibody

Size: 100µg specific antibody in 200µl



Target Protein

Principal Names: KPNA3, karyopherin subunit alpha 3, IPOA4, SRP1, SRP1gamma, SRP4, hSRP1, SRP1-gamma, importin alpha 4, importin alpha Q2, importin alpha-3, importin subunit alpha-3, importin-alpha-Q2, karyopherin alpha 3 (importin alpha 4), karyopherin subunit alpha-3, qip2

Official Symbol: KPNA3

Accession Number(s): NP_002258.2

Human GeneID(s): [3839](#)

Non-Human GeneID(s): 16648 (mouse), 361055 (rat)

Immunogen

Peptide with sequence CDPTANLQTKENF., from the C Terminus of the protein sequence according to NP_002258.2.

Please note the [peptide](#) is available for sale.

Purification and Storage

Purified from goat serum by ammonium sulphate precipitation followed by antigen affinity chromatography using the immunizing peptide.

Supplied at 0.5 mg/ml in Tris saline, 0.02% sodium azide, pH7.3 with 0.5% bovine serum albumin.

Aliquot and store at -20°C. Minimize freezing and thawing.

Applications Tested

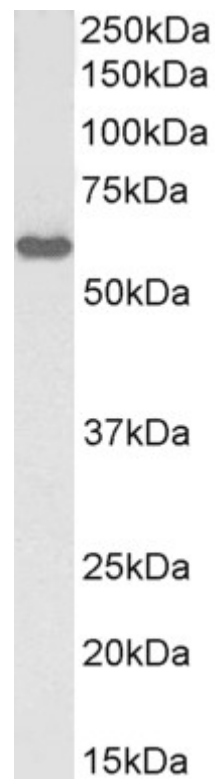
Peptide ELISA: antibody detection limit dilution 1:32000.

Western blot: Approx 55kDa band observed in Rat Testis lysates (calculated MW of 57.8kDa according to Human NP_002258.2 and Rat NP_001014792.1). See non-biotinylated parental product's datasheet for further QC data. Recommended concentration: 1-3µg/ml.

Species Reactivity

Tested: Human, Mouse, Rat

Expected from sequence similarity: Human, Mouse, Rat, Dog, Cow



Biotinylated EB06237 (1 μ g/ml) staining of Rat Testis lysate (35 μ g protein in RIPA buffer), exactly mirroring its parental non-biotinylated product. Primary incubation was 1 hour. Detected by chemiluminescence, using streptavidin-HRP and using NAP blocker as a substitute for skimmed milk.