



## UK Office

### Everest Biotech Ltd

Cherwell Innovation Centre  
77 Heyford Park  
Upper Heyford  
Oxfordshire  
OX25 5HD  
UK

Enquiries:

[info@everestbiotech.com](mailto:info@everestbiotech.com)

Sales:

[sales@everestbiotech.com](mailto:sales@everestbiotech.com)

Tech support:

[support@everestbiotech.com](mailto:support@everestbiotech.com)

Tel: +44 (0)1869 238326

Fax: +44 (0)1869 238327

## US Office

### Everest Biotech c/o Abcore

405 Maple Street, Suite A106  
Ramona,  
CA 92065  
USA

Inquiries:

[info@everestbiotech.com](mailto:info@everestbiotech.com)

Sales:

[usasales@everestbiotech.com](mailto:usasales@everestbiotech.com)

Tech support:

[support@everestbiotech.com](mailto:support@everestbiotech.com)

Tel: 888-320-4628 (toll-free)

Fax: 888-841-9041

[www.everestbiotech.com](http://www.everestbiotech.com)

**Research Use Only. Not for  
diagnostic or therapeutic use.**

## EB07209-T - Goat Anti-Ku80 / XRCC5 Antibody - Trial

Size: 20µg specific antibody in 40µl



### Target Protein

**Principal Names:** XRCC5, KU80, X-ray repair complementing defective repair in Chinese hamster cells 5 (double-strand-break rejoining Ku autoantigen, 80kDa), HGNC:12833, KARP-1, KARP1, Ku86, NFIV, ATP-dependent DNA helicase II, DNA repair protein XRCC5, Ku86 autoantigen related protein 1, Ku autoantigen, 80kD, X-ray repair, complementing defective, repair in Chinese hamster

**Official Symbol:** XRCC5

**Accession Number(s):** NP\_066964.1

**Human GenelD(s):** [7520](#)

### Immunogen

Peptide with sequence C-SLAKKDEKDTLED, from the internal region of the protein sequence according to NP\_066964.1.

Please note the [peptide](#) is available for sale.

### Purification and Storage

Purified from goat serum by ammonium sulphate precipitation followed by antigen affinity chromatography using the immunizing peptide.

Supplied at 0.5 mg/ml in Tris saline, 0.02% sodium azide, pH7.3 with 0.5% bovine serum albumin.

Aliquot and store at -20°C. Minimize freezing and thawing.

### Applications Tested

**Peptide ELISA:** antibody detection limit dilution 1:16000.

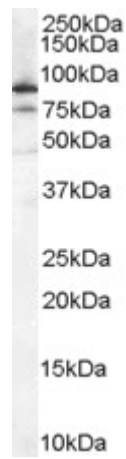
**Western blot:** Approx 80-85kDa band observed in lysates of HeLa (calculated MW of 82.7kDa according to NP\_066964.1). Recommended concentration: 0.1-0.3µg/ml. An additional band of 75kDa was observed consistent with products from other sources.

**IHC:** Paraffin embedded Human Spleen. Recommended concentration: 5µg/ml.

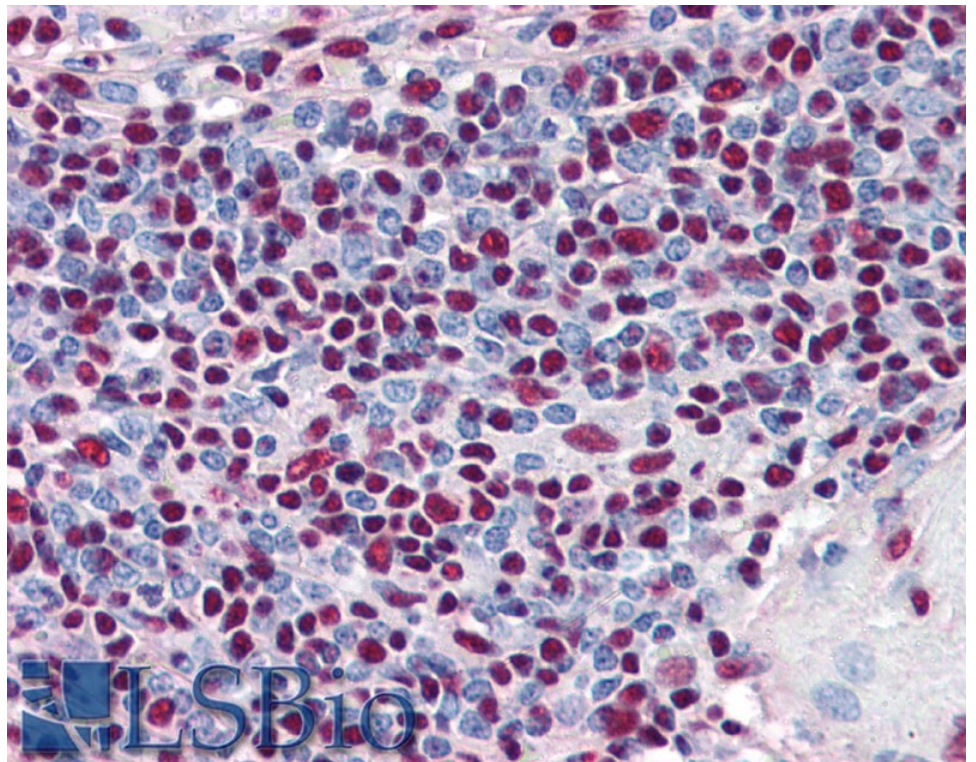
### Species Reactivity

**Tested:** Human

**Expected from sequence similarity:** Human



EB07209 (0.1µg/ml) staining of HeLa cell lysate (35µg protein in RIPA buffer). Primary incubation was 1 hour.  
Detected by chemiluminescence.



EB07209 (5µg/ml) staining of paraffin embedded Human Spleen. Steamed antigen retrieval with citrate buffer pH 6, AP-staining.