



UK Office

Everest Biotech Ltd

Cherwell Innovation Centre
77 Heyford Park
Upper Heyford
Oxfordshire
OX25 5HD
UK

Enquiries:

info@everestbiotech.com

Sales:

sales@everestbiotech.com

Tech support:

support@everestbiotech.com

Tel: +44 (0)1869 238326

Fax: +44 (0)1869 238327

US Office

Everest Biotech c/o Abcore

405 Maple Street, Suite A106
Ramona,
CA 92065
USA

Inquiries:

info@everestbiotech.com

Sales:

usasales@everestbiotech.com

Tech support:

support@everestbiotech.com

Tel: 888-320-4628 (toll-free)

Fax: 888-841-9041

www.everestbiotech.com

**Research Use Only. Not for
diagnostic or therapeutic use.**

EB12248 - Goat Anti-Lactadherin Antibody

Size: 100µg specific antibody in 200µl



Target Protein

Principal Names: MFGE8, milk fat globule-EGF factor 8 protein, BA46, EDIL1, HMFG, HsT19888, MFG-E8, MFGM, OAcGD3S, SED1, SPAG10, hP47, O-acetyl disialoganglioside synthase, breast epithelial antigen BA46, lactadherin, medin, sperm associated antigen 10, sperm surface protein hP47

Official Symbol: MFGE8

Accession Number(s): NP_005919.2; NP_001108086.1

Human GeneID(s): [4240](#)

Important Comments: This antibody is expected to recognize both reported isoforms (NP_005919.2; NP_001108086.1).

Immunogen

Peptide with sequence C-KNNSIPDKQITAS, from the internal region of the protein sequence according to NP_005919.2; NP_001108086.1.

Please note the [peptide](#) is available for sale.

Purification and Storage

Purified from goat serum by ammonium sulphate precipitation followed by antigen affinity chromatography using the immunizing peptide.

Supplied at 0.5 mg/ml in Tris saline, 0.02% sodium azide, pH7.3 with 0.5% bovine serum albumin.

Aliquot and store at -20°C. Minimize freezing and thawing.

Applications Tested

Peptide ELISA: antibody detection limit dilution 1:16000.

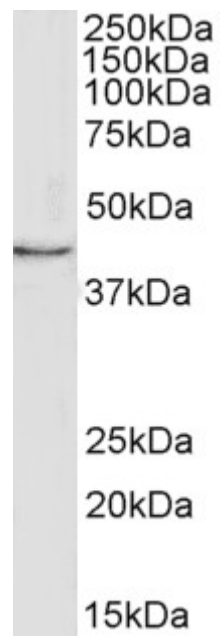
Western blot: Approx 40kDa band observed in lysates of cell line MCF7 (calculated MW of 43.1kDa according to NP_005919.2, and 37.5 according to NP_001108086.1).

Recommended concentration: 1-3µg/ml.

Species Reactivity

Tested: Human

Expected from sequence similarity: Human



EB12248 (1 μ g/ml) staining of MCF7 cell lysate (35 μ g protein in RIPA buffer). Primary incubation was 1 hour.
Detected by chemiluminescence.