



UK Office

Everest Biotech Ltd

Cherwell Innovation Centre
77 Heyford Park
Upper Heyford
Oxfordshire
OX25 5HD
UK

Enquiries:

info@everestbiotech.com

Sales:

sales@everestbiotech.com

Tech support:

support@everestbiotech.com

Tel: +44 (0)1869 238326

www.everestbiotech.com

**Research Use Only. Not for
diagnostic or therapeutic use.**

EB08466 - Goat Anti-Lactoperoxidase Antibody

Size: 100µg specific antibody in 200µl



Target Protein

Principal Names: lactoperoxidase, MGC129990, LPO, MGC129991, SPO, salivary peroxidase

Official Symbol: LPO

Accession Number(s): NP_006142.1

Human GeneID(s): [4025](#)

Important Comments: This antibody is expected to recognise isoform 1 (NP_006142.1) only.

Immunogen

Peptide with sequence C-, from the internal region of the protein sequence according to NP_006142.1.

Please note the [peptide](#) is available for sale.

Purification and Storage

Purified from goat serum by ammonium sulphate precipitation followed by antigen affinity chromatography using the immunizing peptide.

Supplied at 0.5 mg/ml in Tris saline, 0.02% sodium azide, pH7.3 with 0.5% bovine serum albumin.

Aliquot and store at -20°C. Minimize freezing and thawing.

Applications Tested

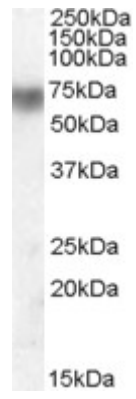
Peptide ELISA: antibody detection limit dilution 1:128000.

Western blot: Approx 70-75kDa band observed in Human Lung lysates (calculated MW of 80.3kDa according to NP_006142.1). Recommended concentration: 0.01-0.03µg/ml.

Species Reactivity

Tested: Human

Expected from sequence similarity: Human, Mouse, Rat, Pig, Cow



EB08466 (0.01µg/ml) staining of Human Lung lysate (35µg protein in RIPA buffer). Primary incubation was 1 hour. Detected by chemiluminescence.