

UK Office

Everest Biotech Ltd

Cherwell Innovation Centre
77 Heyford Park
Upper Heyford
Oxfordshire
OX25 5HD
UK

Enquiries:

info@everestbiotech.com

Sales:

sales@everestbiotech.com

Tech support:

support@everestbiotech.com

Tel: +44 (0)1869 238326

www.everestbiotech.com

**Research Use Only. Not for
diagnostic or therapeutic use.**

EB08570 - Goat Anti-Laforin (isoform a) Antibody

Size: 100µg specific antibody in 200µl



Target Protein

Principal Names: epilepsy, progressive myoclonus type 2, Lafora disease (laforin), laforin, EPM2A, epilepsy, progressive myoclonus type 2A, Lafora disease (laforin), EPM2, MELF, glucan phosphatase, lafora PTPase, LAFPTPase

Official Symbol: EPM2A

Accession Number(s): NP_005661.1; NP_001018051.1; NP_001346986.1; NP_001355059.1

Human GeneID(s): [7957](#)

Non-Human GeneID(s): 13853 (mouse), 680683 (rat)

Important Comments: This antibody is expected to recognize all reported isoforms listed.

Immunogen

Peptide with sequence C-EATGHTNEMKHTTD, from the internal region of the protein sequence according to NP_005661.1; NP_001018051.1; NP_001346986.1; NP_001355059.1.

Please note the [peptide](#) is available for sale.

Purification and Storage

Purified from goat serum by ammonium sulphate precipitation followed by antigen affinity chromatography using the immunizing peptide.

Supplied at 0.5 mg/ml in Tris saline, 0.02% sodium azide, pH7.3 with 0.5% bovine serum albumin.

Aliquot and store at -20°C. Minimize freezing and thawing.

Applications Tested

Peptide ELISA: antibody detection limit dilution 1:16000.

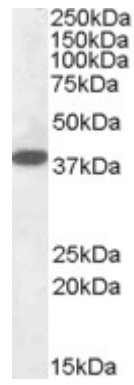
Western blot: Approx. 38kDa band observed in Human Brain (Cerebellum) lysates (calculated MW of 37.2kDa according to NP_005661.1). Recommended concentration: 0.1-0.3µg/ml. Primary incubation was 1 hour.

IHC: Paraffin embedded Human Cerebellum and Heart. Recommended concentration: 2.5µg/ml.

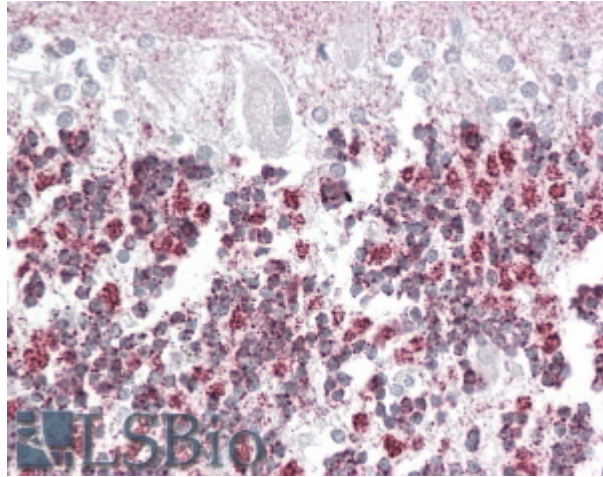
Species Reactivity

Tested: Human

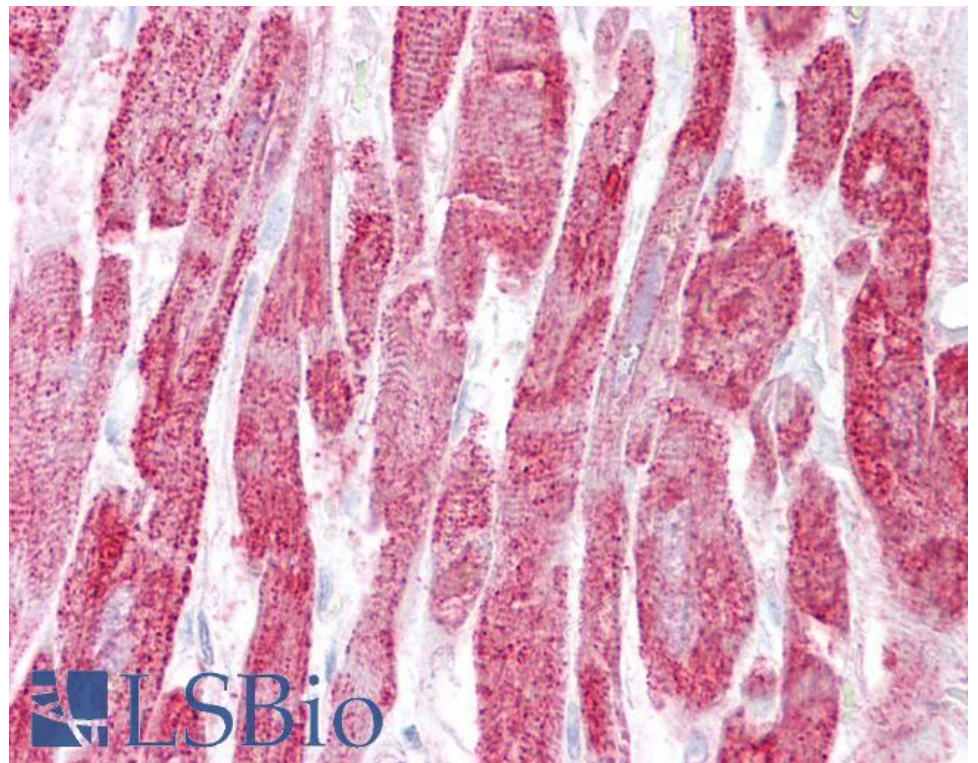
Expected from sequence similarity: Human, Mouse, Rat, Cow



EB08570 (0.1µg/ml) staining of Human Cerebellum lysate (35µg protein in RIPA buffer). Detected by chemiluminescence.



EB08570 (2.5µg/ml) staining of paraffin embedded Human Cerebellum. Steamed antigen retrieval with citrate buffer pH 6, AP-staining.



EB08570 (2.5µg/ml) staining of paraffin embedded Human Heart. Steamed antigen retrieval with citrate buffer pH 6, AP-staining.