



UK Office

Everest Biotech Ltd

Cherwell Innovation Centre
77 Heyford Park
Upper Heyford
Oxfordshire
OX25 5HD
UK

Enquiries:

info@everestbiotech.com

Sales:

sales@everestbiotech.com

Tech support:

support@everestbiotech.com

Tel: +44 (0)1869 238326

www.everestbiotech.com

**Research Use Only. Not for
diagnostic or therapeutic use.**

EB11654 - Goat Anti-Lamin B1 (isoform 1) Antibody

Size: 100µg specific antibody in 200µl



Target Protein

Principal Names: ADLD, lamin B1, lamin-B1, LMN, LMN2, LMNB, LMNB1, MGC111419, OTTHUMP00000159218

Official Symbol: LMNB1

Accession Number(s): NP_005564.1

Human GeneID(s): [4001](#)

Important Comments: This antibody is expected to recognize isoform 1 (NP_005564.1) only.

Immunogen

Peptide with sequence C-KESDLNGAQIKLRE, from the internal region of the protein sequence according to NP_005564.1.

Please note the [peptide](#) is available for sale.

Purification and Storage

Purified from goat serum by ammonium sulphate precipitation followed by antigen affinity chromatography using the immunizing peptide.

Supplied at 0.5 mg/ml in Tris saline, 0.02% sodium azide, pH7.3 with 0.5% bovine serum albumin.

Aliquot and store at -20°C. Minimize freezing and thawing.

Applications Tested

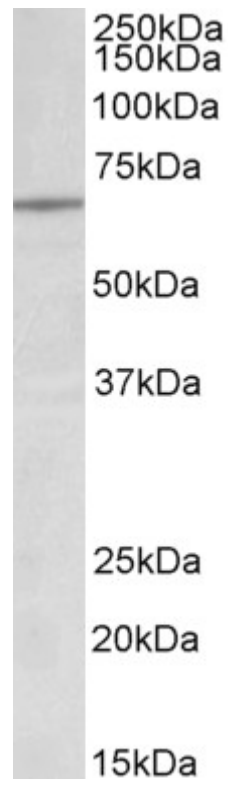
Peptide ELISA: antibody detection limit dilution 1:128000.

Western blot: Approx 65kDa band observed in lysates of cell line Jurkat (calculated MW of 66.4kDa according to NP_005564.1). Recommended concentration: 0.1-0.3µg/ml.

Species Reactivity

Tested: Human

Expected from sequence similarity: Human, Pig, Cow



EB11654 (0.2 μ g/ml) staining of Jurkat lysate (35 μ g protein in RIPA buffer). Primary incubation was 1 hour.
Detected by chemiluminescence.