

UK Office

Everest Biotech Ltd

Cherwell Innovation Centre
77 Heyford Park
Upper Heyford
Oxfordshire
OX25 5HD
UK

Enquiries:

info@everestbiotech.com

Sales:

sales@everestbiotech.com

Tech support:

support@everestbiotech.com

Tel: +44 (0)1869 238326

www.everestbiotech.com

**Research Use Only. Not for
diagnostic or therapeutic use.**

EB08824 - Goat Anti-LASS3 / CerS3 Antibody

Size: 100µg specific antibody in 200µl



Target Protein

Principal Names: LASS3, CerS3, LAG1 homolog, ceramide synthase 3, MGC27091, LAG1 longevity assurance homolog 3

Official Symbol: CERS3

Accession Number(s): NP_849164.2

Human GeneID(s): [204219](#)

Non-Human GeneID(s): 545975 (mouse), 499174 (rat)

Immunogen

Peptide with sequence C-RAERHLIPNGQHGH, from the C Terminus of the protein sequence according to NP_849164.2.

Please note the [peptide](#) is available for sale.

Purification and Storage

Purified from goat serum by ammonium sulphate precipitation followed by antigen affinity chromatography using the immunizing peptide.

Supplied at 0.5 mg/ml in Tris saline, 0.02% sodium azide, pH7.3 with 0.5% bovine serum albumin.

Aliquot and store at -20°C. Minimize freezing and thawing.

Applications Tested

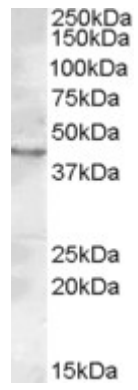
Peptide ELISA: antibody detection limit dilution 1:32000.

Western blot: Approx. 45 kDa band observed in Rat Testis lysates (calculated MW of 46.3 kDa according to Human NP_849164.2 and of 47.2 kDa according to Rat NP_001121033.1). Recommended concentration: 2-3µg/ml.

Species Reactivity

Tested: Rat

Expected from sequence similarity: Human, Mouse, Rat



EB08824 (0.2 μ g/ml) staining of Rat Testis lysate (35 μ g protein in RIPA buffer). Primary incubation was 1 hour.
Detected by chemiluminescence.