



UK Office

Everest Biotech Ltd

Cherwell Innovation Centre
77 Heyford Park
Upper Heyford
Oxfordshire
OX25 5HD
UK

Enquiries:

info@everestbiotech.com

Sales:

sales@everestbiotech.com

Tech support:

support@everestbiotech.com

Tel: +44 (0)1869 238326

Fax: +44 (0)1869 238327

US Office

Everest Biotech c/o Abcore

405 Maple Street, Suite A106
Ramona,
CA 92065
USA

Inquiries:

info@everestbiotech.com

Sales:

usasales@everestbiotech.com

Tech support:

support@everestbiotech.com

Tel: 888-320-4628 (toll-free)

Fax: 888-841-9041

www.everestbiotech.com

**Research Use Only. Not for
diagnostic or therapeutic use.**

EB06418 - Goat Anti-LAT1 Antibody

Size: 100µg specific antibody in 200µl



Target Protein

Principal Names: LAT1, LAT, linker for activation of T cells, pp36, 36 kDa
phospho-tyrosine adaptor protein, linker for activation of T-cells family member 1

Official Symbol: LAT

Accession Number(s): NP_055202.1; NP_001014987.1; NP_001014989.1;
NP_001014988.1

Human GeneID(s): [27040](#)

Important Comments: This antibody is expected to recognize isoform a (NP_055202.1),
isoform b (NP_001014987.1 and NP_001014989.1) and isoform c (NP_001014988.1).

Immunogen

Peptide with sequence C-GAPDYENLQELN, from the C Terminus of the protein
sequence according to NP_055202.1; NP_001014987.1; NP_001014989.1;
NP_001014988.1.

Please note the [peptide](#) is available for sale.

Purification and Storage

Purified from goat serum by ammonium sulphate precipitation followed by antigen affinity
chromatography using the immunizing peptide.

Supplied at 0.5 mg/ml in Tris saline, 0.02% sodium azide, pH7.3 with 0.5% bovine serum
albumin.

Aliquot and store at -20°C. Minimize freezing and thawing.

Applications Tested

Peptide ELISA: antibody detection limit dilution 1:2000.

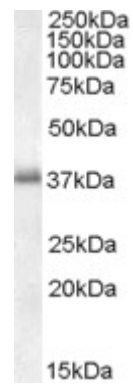
Western blot: Approx 37kDa band observed in Human Peripheral Blood

Mononucleocytes lysates (calculated MW of 27.9kDa according to NP_055202.1). This
molecular weight is routinely observed by other sources. Recommended concentration:
0.01-0.03µg/ml.

Species Reactivity

Tested: Human

Expected from sequence similarity: Human, Mouse, Rat



EB06418 (0.01 μ g/ml) staining of Peripheral Blood Mononucleocytes lysate (35 μ g protein in RIPA buffer). Primary incubation was 1 hour. Detected by chemiluminescence.