



## UK Office

### Everest Biotech Ltd

Cherwell Innovation Centre  
77 Heyford Park  
Upper Heyford  
Oxfordshire  
OX25 5HD  
UK

Enquiries:

[info@everestbiotech.com](mailto:info@everestbiotech.com)

Sales:

[sales@everestbiotech.com](mailto:sales@everestbiotech.com)

Tech support:

[support@everestbiotech.com](mailto:support@everestbiotech.com)

Tel: +44 (0)1869 238326

Fax: +44 (0)1869 238327

## US Office

### Everest Biotech c/o Abcore

405 Maple Street, Suite A106  
Ramona,  
CA 92065  
USA

Inquiries:

[info@everestbiotech.com](mailto:info@everestbiotech.com)

Sales:

[usasales@everestbiotech.com](mailto:usasales@everestbiotech.com)

Tech support:

[support@everestbiotech.com](mailto:support@everestbiotech.com)

Tel: 888-320-4628 (toll-free)

Fax: 888-841-9041

[www.everestbiotech.com](http://www.everestbiotech.com)

**Research Use Only. Not for  
diagnostic or therapeutic use.**

## EB11387 - Goat Anti-LCK (aa39-52) Antibody

Size: 100µg specific antibody in 200µl



### Target Protein

**Principal Names:** leukocyte C-terminal Src kinase, LSK, lymphocyte cell-specific protein-tyrosine kinase, lymphocyte-specific protein tyrosine kinase, OTTHUMP00000008640, OTTHUMP00000008740, OTTHUMP00000008741, p56(LSTRA) protein-tyrosine kinase, p56lck, pp58lck, proto-oncogene tyrosine-protein kinase LCK, t cell-specific protein-tyrosine kinase, T-lymphocyte specific protein tyrosine kinase p56lck, tyrosine-protein kinase Lck, YT16, LCK

**Official Symbol:** LCK

**Accession Number(s):** NP\_005347.3

**Human GeneID(s):** [3932](#)

**Non-Human GeneID(s):** 16818 (mouse), 313050 (rat)

**Important Comments:** This antibody is not expected to cross-react with other tyrosine protein kinases. Reported variants represent identical protein: NP\_005347.3, NP\_001036236.1

### Immunogen

Peptide with sequence C-RNGSEVRDPLVITYE, from the internal region (near N Terminus) of the protein sequence according to NP\_005347.3.

Please note the [peptide](#) is available for sale.

### Purification and Storage

Purified from goat serum by ammonium sulphate precipitation followed by antigen affinity chromatography using the immunizing peptide.

Supplied at 0.5 mg/ml in Tris saline, 0.02% sodium azide, pH7.3 with 0.5% bovine serum albumin.

Aliquot and store at -20°C. Minimize freezing and thawing.

### Applications Tested

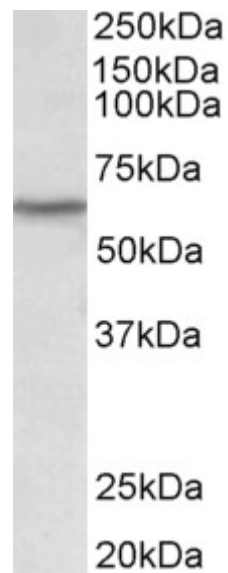
**Peptide ELISA:** antibody detection limit dilution 1:16000.

**Western blot:** Approx 60kDa band observed in Human and Rat Thymus lysates (calculated MW of 58.0kDa according to NP\_005347.3). Recommended concentration: 0.1-0.3µg/ml. Approx 60kDa band observed in Pig Bone Marrow and Spleen lysates (calculated MW of 58.2kDa according to NP\_001137185.1). Recommended concentration: 1-3µg/ml.

### Species Reactivity

**Tested:** Human, Rat, Pig

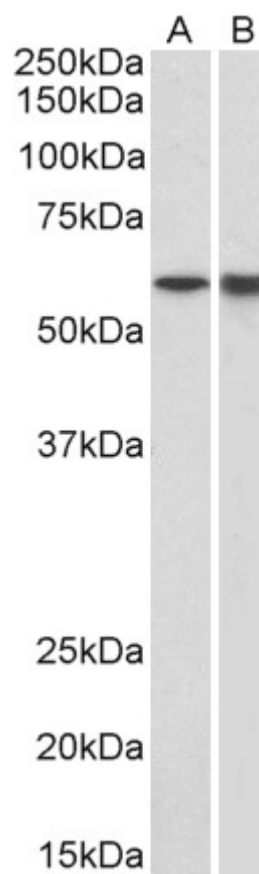
**Expected from sequence similarity:** Human, Mouse, Rat, Dog, Pig, Cow



EB11387 (0.1 $\mu$ g/ml) staining of Human Thymus lysate (35 $\mu$ g protein in RIPA buffer). Primary incubation was 1 hour. Detected by chemiluminescence.



EB11387 (0.3 $\mu$ g/ml) staining of Rat Thymus lysate (35 $\mu$ g protein in RIPA buffer). Primary incubation was 1 hour. Detected by chemiluminescence.



EB11387 (1 $\mu$ g/ml) staining of Pig Bone Marrow (A) and Spleen (B) lysates (35 $\mu$ g protein in RIPA buffer). Primary incubation was 1 hour. Detected by chemiluminescence.