



UK Office

Everest Biotech Ltd

Cherwell Innovation Centre
77 Heyford Park
Upper Heyford
Oxfordshire
OX25 5HD
UK

Enquiries:

info@everestbiotech.com

Sales:

sales@everestbiotech.com

Tech support:

support@everestbiotech.com

Tel: +44 (0)1869 238326

Fax: +44 (0)1869 238327

US Office

Everest Biotech c/o Abcore

405 Maple Street, Suite A106
Ramona,
CA 92065
USA

Inquiries:

info@everestbiotech.com

Sales:

usasales@everestbiotech.com

Tech support:

support@everestbiotech.com

Tel: 888-320-4628 (toll-free)

Fax: 888-841-9041

www.everestbiotech.com

**Research Use Only. Not for
diagnostic or therapeutic use.**

EB12578 - Goat Anti-LCP1 / plastin-2 (aa277-291) Antibody

Size: 100µg specific antibody in 200µl



Target Protein

Principal Names: LCP1, CP64, DKFZp781A23186, FLJ25423, FLJ26114, FLJ39956, L-PLASTIN, LC64P, LPL, PLS2, lymphocyte cytosolic protein 1 (L-plastin), L-plastin, L-plastin (Lymphocyte cytosolic protein 1) (LCP-1) (LC64P), Lymphocyte cytosolic protein-1 (plasmin), OTTHUMP00000018362, bA139H14.1 (lymphocyte cytosolic protein 1 (L-plastin)), plastin 2

Official Symbol: LCP1

Accession Number(s): NP_002289.2

Human GeneID(s): [3936](#)

Immunogen

Peptide with sequence HLENAGCNKIGNFST, from the internal region of the protein sequence according to NP_002289.2.

Please note the [peptide](#) is available for sale.

Purification and Storage

Purified from goat serum by ammonium sulphate precipitation followed by antigen affinity chromatography using the immunizing peptide.

Supplied at 0.5 mg/ml in Tris saline, 0.02% sodium azide, pH7.3 with 0.5% bovine serum albumin.

Aliquot and store at -20°C. Minimize freezing and thawing.

Applications Tested

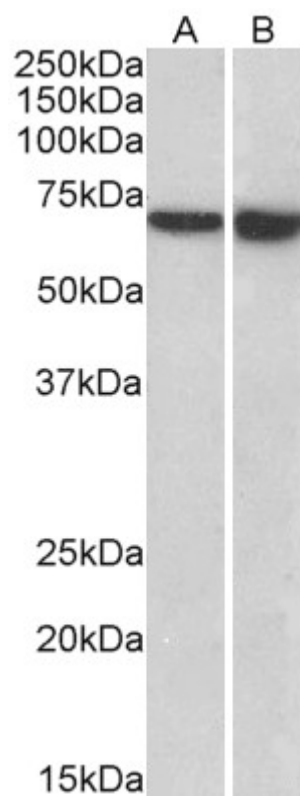
Peptide ELISA: antibody detection limit dilution 1:16000.

Western blot: Approx 70kDa band observed in lysates of cell lines Daudi and U937 (calculated MW of 70.3kDa according to NP_002289.2). Recommended concentration: 0.5-3µg/ml.

Species Reactivity

Tested: Human

Expected from sequence similarity: Human



EB12578 (0.5 μ g/ml) staining of Daudi (A) and U937 (B) lysates (35 μ g protein in RIPA buffer). Primary incubation was 1 hour. Detected by chemiluminescence.