

## UK Office

### Everest Biotech Ltd

Cherwell Innovation Centre  
77 Heyford Park  
Upper Heyford  
Oxfordshire  
OX25 5HD  
UK

Enquiries:

[info@everestbiotech.com](mailto:info@everestbiotech.com)

Sales:

[sales@everestbiotech.com](mailto:sales@everestbiotech.com)

Tech support:

[support@everestbiotech.com](mailto:support@everestbiotech.com)

Tel: +44 (0)1869 238326

[www.everestbiotech.com](http://www.everestbiotech.com)

**Research Use Only. Not for  
diagnostic or therapeutic use.**

## EB12393 - Goat Anti-LDHA Antibody

Size: 100µg specific antibody in 200µl



### Target Protein

**Principal Names:** LDHA, lactate dehydrogenase A, GSD11, LDH1, LDHM, L-lactate dehydrogenase A chain, LDH muscle subunit, LDH-A, LDH-M, cell proliferation-inducing gene 19 protein, lactate dehydrogenase M, proliferation-inducing gene 19, renal carcinoma antigen NY-REN-59

**Official Symbol:** LDHA

**Accession Number(s):** NP\_005557.1; NP\_001128711.1; NP\_001158886.1

**Human GeneID(s):** [3939](#)

**Important Comments:** This antibody is expected to recognize isoform 1, 2 and 3 (NP\_005557.1; NP\_001128711.1; NP\_001158886.1).

### Immunogen

Peptide with sequence C-SDLVKVTLTSE, from the C Terminus of the protein sequence according to NP\_005557.1; NP\_001128711.1; NP\_001158886.1.

Please note the [peptide](#) is available for sale.

### Purification and Storage

Purified from goat serum by ammonium sulphate precipitation followed by antigen affinity chromatography using the immunizing peptide.

Supplied at 0.5 mg/ml in Tris saline, 0.02% sodium azide, pH7.3 with 0.5% bovine serum albumin.

Aliquot and store at -20°C. Minimize freezing and thawing.

### Applications Tested

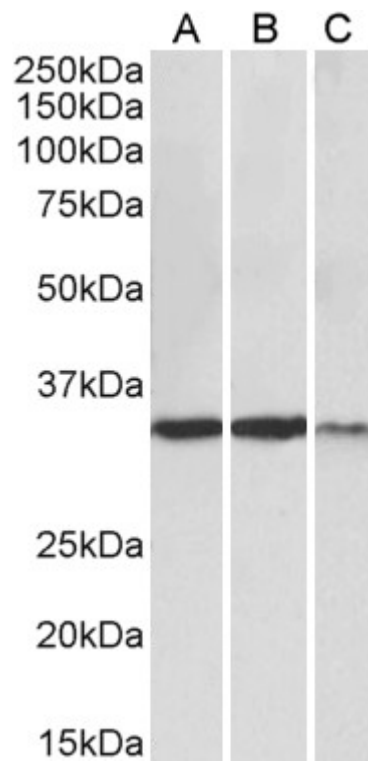
**Peptide ELISA:** antibody detection limit dilution 1:64000.

**Western blot:** Approx 35kDa band observed in Human Heart, Skeletal Muscle and Kidney lysates (calculated MW of 36.7kDa according to NP\_005557.1). Recommended concentration: 0.3-1µg/ml.

### Species Reactivity

**Tested:** Human

**Expected from sequence similarity:** Human



EB12393 (0.3 $\mu$ g/ml) staining of Heart (A), Skeletal Muscle (B) and Kidney (C) lysates (35 $\mu$ g protein in RIPA buffer). Primary incubation was 1 hour. Detected by chemiluminescence.