



UK Office

Everest Biotech Ltd

Cherwell Innovation Centre
77 Heyford Park
Upper Heyford
Oxfordshire
OX25 5HD
UK

Enquiries:

info@everestbiotech.com

Sales:

sales@everestbiotech.com

Tech support:

support@everestbiotech.com

Tel: +44 (0)1869 238326

Fax: +44 (0)1869 238327

US Office

Everest Biotech c/o Abcore

405 Maple Street, Suite A106
Ramona,
CA 92065
USA

Inquiries:

info@everestbiotech.com

Sales:

usasales@everestbiotech.com

Tech support:

support@everestbiotech.com

Tel: 888-320-4628 (toll-free)

Fax: 888-841-9041

www.everestbiotech.com

**Research Use Only. Not for
diagnostic or therapeutic use.**

EB12393 - Goat Anti-LDHA Antibody

Size: 100µg specific antibody in 200µl



Target Protein

Principal Names: LDHA, lactate dehydrogenase A, GSD11, LDH1, LDHM, L-lactate dehydrogenase A chain, LDH muscle subunit, LDH-A, LDH-M, cell proliferation-inducing gene 19 protein, lactate dehydrogenase M, proliferation-inducing gene 19, renal carcinoma antigen NY-REN-59

Official Symbol: LDHA

Accession Number(s): NP_005557.1; NP_001128711.1; NP_001158886.1

Human GeneID(s): [3939](#)

Important Comments: This antibody is expected to recognize isoform 1, 2 and 3 (NP_005557.1; NP_001128711.1; NP_001158886.1).

Immunogen

Peptide with sequence C-SDLVKVTLTSE, from the C Terminus of the protein sequence according to NP_005557.1; NP_001128711.1; NP_001158886.1.

Please note the [peptide](#) is available for sale.

Purification and Storage

Purified from goat serum by ammonium sulphate precipitation followed by antigen affinity chromatography using the immunizing peptide.

Supplied at 0.5 mg/ml in Tris saline, 0.02% sodium azide, pH7.3 with 0.5% bovine serum albumin.

Aliquot and store at -20°C. Minimize freezing and thawing.

Applications Tested

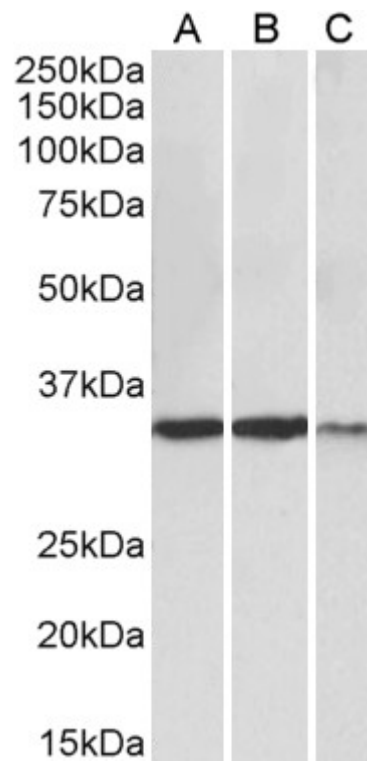
Peptide ELISA: antibody detection limit dilution 1:64000.

Western blot: Approx 35kDa band observed in Human Heart, Skeletal Muscle and Kidney lysates (calculated MW of 36.7kDa according to NP_005557.1). Recommended concentration: 0.3-1µg/ml.

Species Reactivity

Tested: Human

Expected from sequence similarity: Human



EB12393 (0.3 μ g/ml) staining of Heart (A), Skeletal Muscle (B) and Kidney (C) lysates (35 μ g protein in RIPA buffer). Primary incubation was 1 hour. Detected by chemiluminescence.