

## UK Office

### Everest Biotech Ltd

Cherwell Innovation Centre  
77 Heyford Park  
Upper Heyford  
Oxfordshire  
OX25 5HD  
UK

Enquiries:

[info@everestbiotech.com](mailto:info@everestbiotech.com)

Sales:

[sales@everestbiotech.com](mailto:sales@everestbiotech.com)

Tech support:

[support@everestbiotech.com](mailto:support@everestbiotech.com)

Tel: +44 (0)1869 238326

[www.everestbiotech.com](http://www.everestbiotech.com)

**Research Use Only. Not for  
diagnostic or therapeutic use.**

## EB12394 - Goat Anti-LDHB (aa15-25) Antibody

Size: 100µg specific antibody in 200µl



### Target Protein

**Principal Names:** LDHB, lactate dehydrogenase B, LDH-B, LDH-H, LDHBD, TRG-5, L-lactate dehydrogenase B chain, LDH heart subunit, lactate dehydrogenase H chain, renal carcinoma antigen NY-REN-46

**Official Symbol:** LDHB

**Accession Number(s):** NP\_002291.1

**Human GeneID(s):** [3945](#)

**Important Comments:** Reported variants represent identical protein: NP\_002291.1, NP\_001167568.1.

### Immunogen

Peptide with sequence C-EEATVPNNKIT, from the internal region (near N terminus) of the protein sequence according to NP\_002291.1.

Please note the [peptide](#) is available for sale.

### Purification and Storage

Purified from goat serum by ammonium sulphate precipitation followed by antigen affinity chromatography using the immunizing peptide.

Supplied at 0.5 mg/ml in Tris saline, 0.02% sodium azide, pH7.3 with 0.5% bovine serum albumin.

Aliquot and store at -20°C. Minimize freezing and thawing.

### Applications Tested

**Peptide ELISA:** antibody detection limit dilution 1:4000.

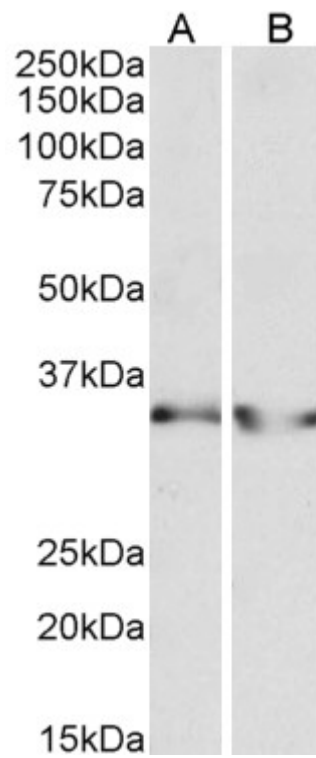
**Western blot:** Approx 35kDa band observed in Human Heart and Kidney lysates (calculated MW of 36.6kDa according to NP\_002291.1). Recommended concentration: 0.3-1µg/ml.

**IHC:** Paraffin embedded Human Kidney. Recommended concentration: 5µg/ml.

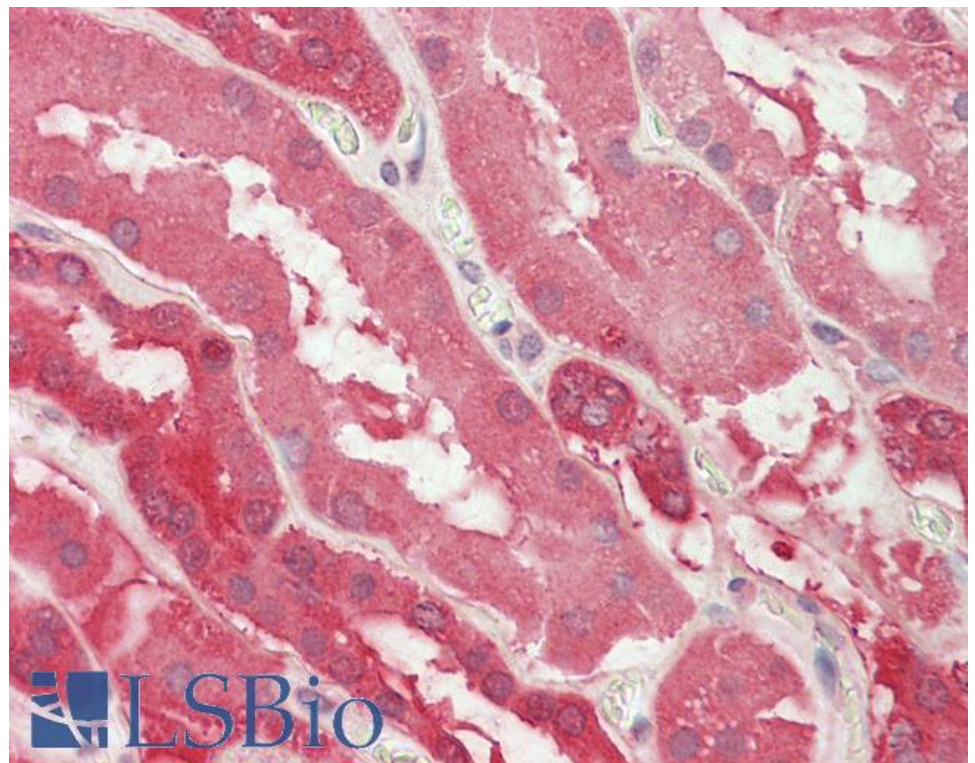
### Species Reactivity

**Tested:** Human

**Expected from sequence similarity:** Human



EB12394 (0.3 $\mu$ g/ml) staining of Human Heart (A) and Human Kidney (B) lysates (35 $\mu$ g protein in RIPA buffer). Primary incubation was 1 hour. Detected by chemiluminescence.



EB12394 (5 $\mu$ g/ml) staining of paraffin embedded Human Kidney. Steamed antigen retrieval with citrate buffer pH 6, AP-staining.