

## UK Office

### Everest Biotech Ltd

Cherwell Innovation Centre  
77 Heyford Park  
Upper Heyford  
Oxfordshire  
OX25 5HD  
UK

Enquiries:

[info@everestbiotech.com](mailto:info@everestbiotech.com)

Sales:

[sales@everestbiotech.com](mailto:sales@everestbiotech.com)

Tech support:

[support@everestbiotech.com](mailto:support@everestbiotech.com)

Tel: +44 (0)1869 238326

[www.everestbiotech.com](http://www.everestbiotech.com)

**Research Use Only. Not for  
diagnostic or therapeutic use.**

## EB12395 - Goat Anti-LDHB Antibody

Size: 100µg specific antibody in 200µl



### Target Protein

**Principal Names:** LDHB, lactate dehydrogenase B, LDH-B, LDH-H, LDHBD, TRG-5, L-lactate dehydrogenase B chain, LDH heart subunit, lactate dehydrogenase H chain, renal carcinoma antigen NY-REN-46

**Official Symbol:** LDHB

**Accession Number(s):** NP\_002291.1

**Human GeneID(s):** [3945](#)

**Non-Human GeneID(s):** 16832 (mouse), 24534 (rat)

**Important Comments:** Reported variants represent identical protein: NP\_002291.1, NP\_001167568.1.

### Immunogen

Peptide with sequence C-NARGLTSVINQKLIK, from the internal region (near C terminus) of the protein sequence according to NP\_002291.1.

Please note the [peptide](#) is available for sale.

### Purification and Storage

Purified from goat serum by ammonium sulphate precipitation followed by antigen affinity chromatography using the immunizing peptide.

Supplied at 0.5 mg/ml in Tris saline, 0.02% sodium azide, pH7.3 with 0.5% bovine serum albumin.

Aliquot and store at -20°C. Minimize freezing and thawing.

### Applications Tested

**Peptide ELISA:** antibody detection limit dilution 1:16000.

**Western blot:** Approx 35kDa band observed in Human, Mouse, Rat and Pig Heart lysates (calculated MW of 36.6kDa according to NP\_002291.1). Recommended concentration: 0.03-0.1µg/ml.

**Additional validation:** This antibody has been successfully used in the following paper: Sikorski et al. (2018) PMID: 30377371.

### Species Reactivity

**Tested:** Human, Mouse, Rat, Pig

**Expected from sequence similarity:** Human, Mouse, Rat, Dog, Pig, Cow

### Specific Reference

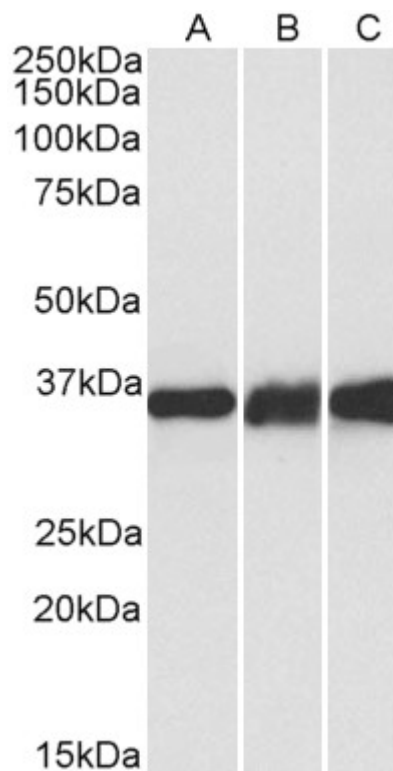
**This antibody has been successfully used in the following paper:**

Krzysztof Sikorski, Adi Mehta, Marit Inngjerdigen, Flourina Thakor, Simon Kling, Tomas Kalina, Tuula A. Nyman, Maria Ekman Stensland, Wei Zhou, Gustavo A. De Souza, Lars Holden, Jan Stuchly, Markus Templin and Fridtjof Lund-Johansen

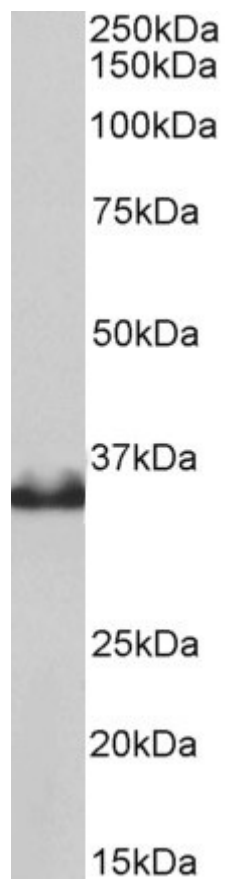
A high-throughput pipeline for validation of antibodies

Nat Methods. 2018 Nov;15(11):909-912

PMID: 30377371



EB12395 (0.1µg/ml) staining of Human (A), Mouse (B) and Rat (C) Heart lysates (35µg protein in RIPA buffer). Primary incubation was 1 hour. Detected by chemiluminescence.



EB12395 (0.1µg/ml) staining of Pig Heart lysates (35µg protein in RIPA buffer). Primary incubation was 1 hour. Detected by chemiluminescence.