

## UK Office

### Everest Biotech Ltd

Cherwell Innovation Centre  
77 Heyford Park  
Upper Heyford  
Oxfordshire  
OX25 5HD  
UK

Enquiries:

[info@everestbiotech.com](mailto:info@everestbiotech.com)

Sales:

[sales@everestbiotech.com](mailto:sales@everestbiotech.com)

Tech support:

[support@everestbiotech.com](mailto:support@everestbiotech.com)

Tel: +44 (0)1869 238326

[www.everestbiotech.com](http://www.everestbiotech.com)

**Research Use Only. Not for  
diagnostic or therapeutic use.**

## EB07977 - Goat Anti-LDHC (aa 217 - 231) Antibody

Size: 100µg specific antibody in 200µl



### Target Protein

**Principal Names:** LDHC, MGC111073, lactate dehydrogenase C, LDH3, LDHX

**Official Symbol:** LDHC

**Accession Number(s):** NP\_002292.1; NP\_059144.1

**Human GeneID(s):** [3948](#)

**Non-Human GeneID(s):** 16833 (mouse)

**Important Comments:** Both variants represent identical product (NP\_002292.1 and NP\_059144.1).

### Immunogen

Peptide with sequence C-KLGTDSKKEHWKNIH, from the Internal region of the protein sequence according to NP\_002292.1; NP\_059144.1.

Please note the [peptide](#) is available for sale.

### Purification and Storage

Purified from goat serum by ammonium sulphate precipitation followed by antigen affinity chromatography using the immunizing peptide.

Supplied at 0.5 mg/ml in Tris saline, 0.02% sodium azide, pH7.3 with 0.5% bovine serum albumin.

Aliquot and store at -20°C. Minimize freezing and thawing.

### Applications Tested

**Peptide ELISA:** antibody detection limit dilution 1:16000.

**Western blot:** Approx 30-35kDa band observed in Mouse Testis lysates (calculated MW of 36.6kDa according to human NP\_002292.1 and 35.9kDa according to mouse NP\_038608.1). Recommended concentration: 0.03-0.1µg/ml. This antibody has been successfully used in WB on Mouse, PMID: 36464740.

**IHC:** In paraffin embedded Mouse Testis shows strong signal in seminiferous tubules of Mouse Testis. Recommended concentration, 1-2µg/ml. This antibody has been successfully used in IHC on Mouse, PMID: 36464740.

### Species Reactivity

**Tested:** Mouse

**Expected from sequence similarity:** Human, Mouse

### Specific Reference

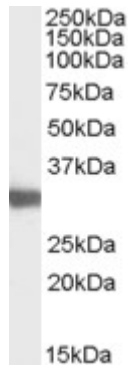
**This antibody has been successfully used in WB and IHC on Mouse:**

Rie Iida-Norita, Haruhiko Miyata, Yuki Kaneda, Chihiro Emori, Taichi Noda, Tatsuya Nakagawa, Martin M Matzuk, Masahito Ikawa

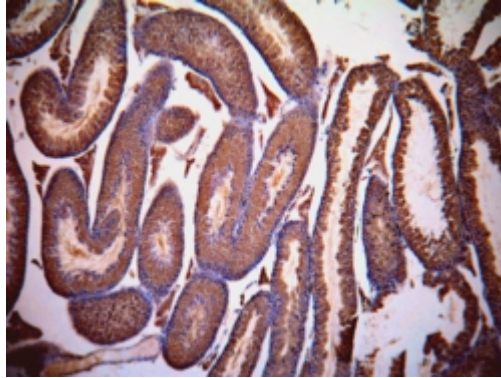
Generation of humanized LDHC knock-in mice as a tool to assess human LDHC-targeting contraceptive drugs.

Andrology. 2023 Jul;11(5):840-848.

PMID: 36464740



EB07977 (0.03 $\mu$ g/ml) staining of Mouse Testis lysate (35 $\mu$ g protein in RIPA buffer). Primary incubation was 1 hour. Detected by chemiluminescence.



EB07977 (1 $\mu$ g/ml) staining of paraffin embedded Mouse Testis. Data kindly provided by Dr. Erwin Goldberg, Northwestern University, Evanston, IL USA.