



UK Office

Everest Biotech Ltd

Cherwell Innovation Centre
77 Heyford Park
Upper Heyford
Oxfordshire
OX25 5HD
UK

Enquiries:

info@everestbiotech.com

Sales:

sales@everestbiotech.com

Tech support:

support@everestbiotech.com

Tel: +44 (0)1869 238326

Fax: +44 (0)1869 238327

US Office

Everest Biotech c/o Abcore

405 Maple Street, Suite A106
Ramona,
CA 92065
USA

Inquiries:

info@everestbiotech.com

Sales:

usasales@everestbiotech.com

Tech support:

support@everestbiotech.com

Tel: 888-320-4628 (toll-free)

Fax: 888-841-9041

www.everestbiotech.com

**Research Use Only. Not for
diagnostic or therapeutic use.**

EB07196 - Goat Anti-LEF1 Antibody

Size: 100µg specific antibody in 200µl



Target Protein

Principal Names: LEF1, lymphoid enhancer-binding factor 1, HGNC:6551, DKFZp586H0919, TCF1ALPHA, lymphoid enhancer binding factor-1

Official Symbol: LEF1

Accession Number(s): NP_057353.1; NP_001124185.1; NP_001124186.1; NP_001159591.1

Human GeneID(s): [51176](#)

Non-Human GeneID(s): 16842 (mouse), 161452 (rat)

Immunogen

Peptide with sequence C-QHEQRKEQEPKRPH, from the internal region of the protein sequence according to NP_057353.1; NP_001124185.1; NP_001124186.1; NP_001159591.1.

Please note the [peptide](#) is available for sale.

Purification and Storage

Purified from goat serum by ammonium sulphate precipitation followed by antigen affinity chromatography using the immunizing peptide.

Supplied at 0.5 mg/ml in Tris saline, 0.02% sodium azide, pH7.3 with 0.5% bovine serum albumin.

Aliquot and store at -20°C. Minimize freezing and thawing.

Applications Tested

Peptide ELISA: antibody detection limit dilution 1:32000.

Western blot: Approx 50--55kDa band observed in nuclear lysates of cell line K562 (calculated MW of 44.2kDa according to NP_057353.1)/ This molecular weight is routinely observed by other sources and was successfully blocked by incubation with the immunising peptide . Recommended concentration: 1-3µg/ml. . Primary incubation 1 hour at room temperature.

Immunofluorescence: Strong expression of the protein seen in the nuclei of Jurkat and U2OS cells. Recommended concentration: 10µg/ml.

Flow Cytometry: Flow cytometric analysis of Jurkat cells. Recommended concentration: 10ug/ml.

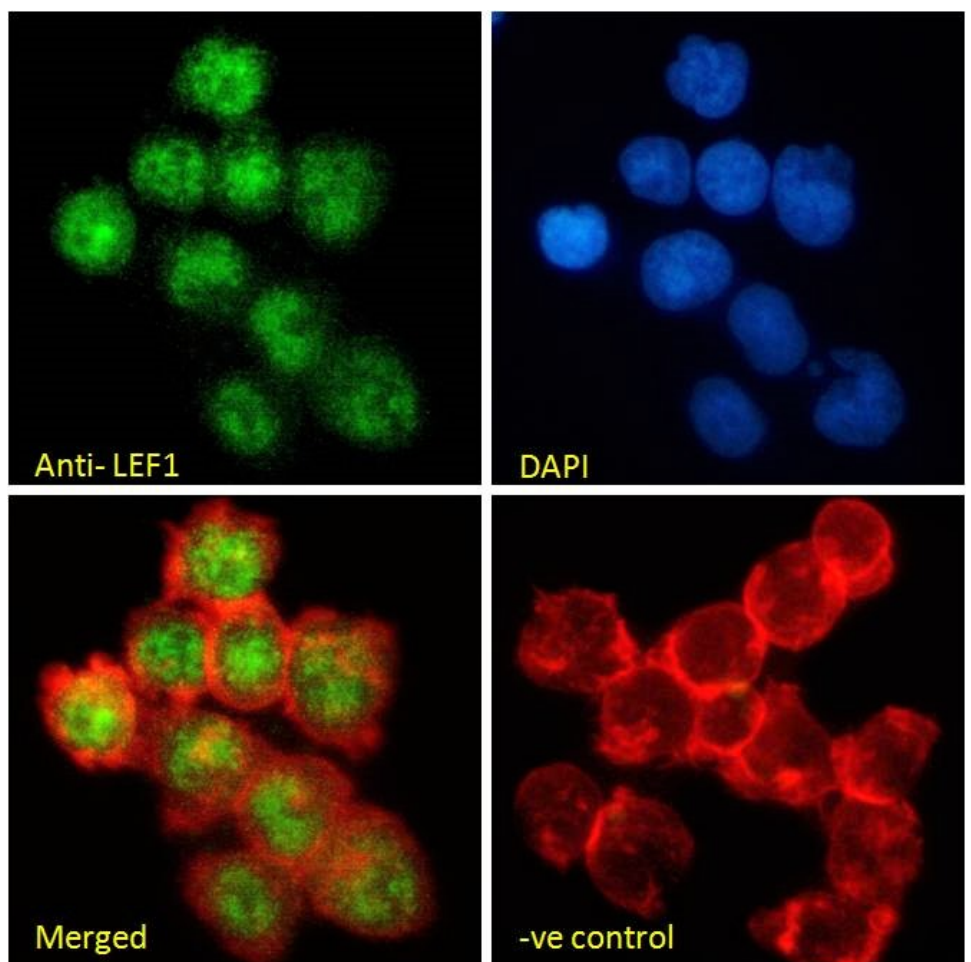
Species Reactivity

Tested: Human

Expected from sequence similarity: Human, Mouse, Rat, Dog, Cow

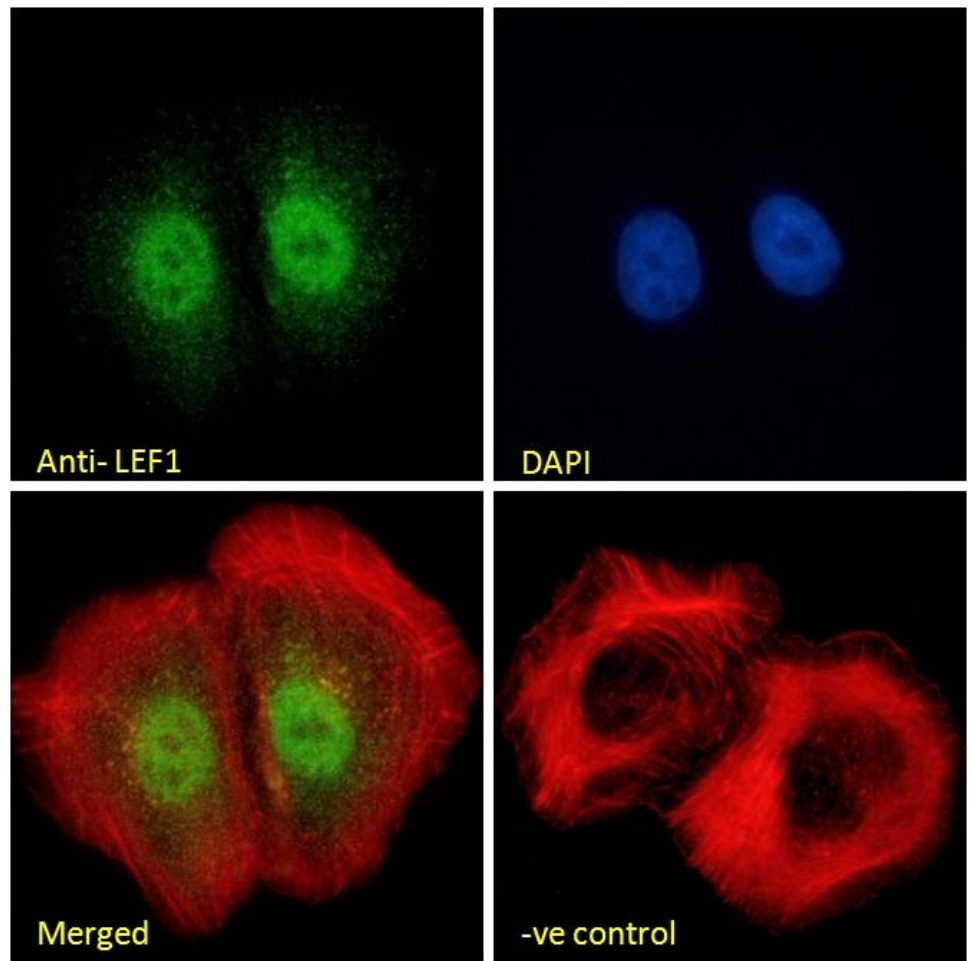


EB07196 (2µg/ml) staining of K562 nuclear cell lysate (A) + peptide (B). (35µg protein in RIPA buffer) Detected by chemiluminescence.



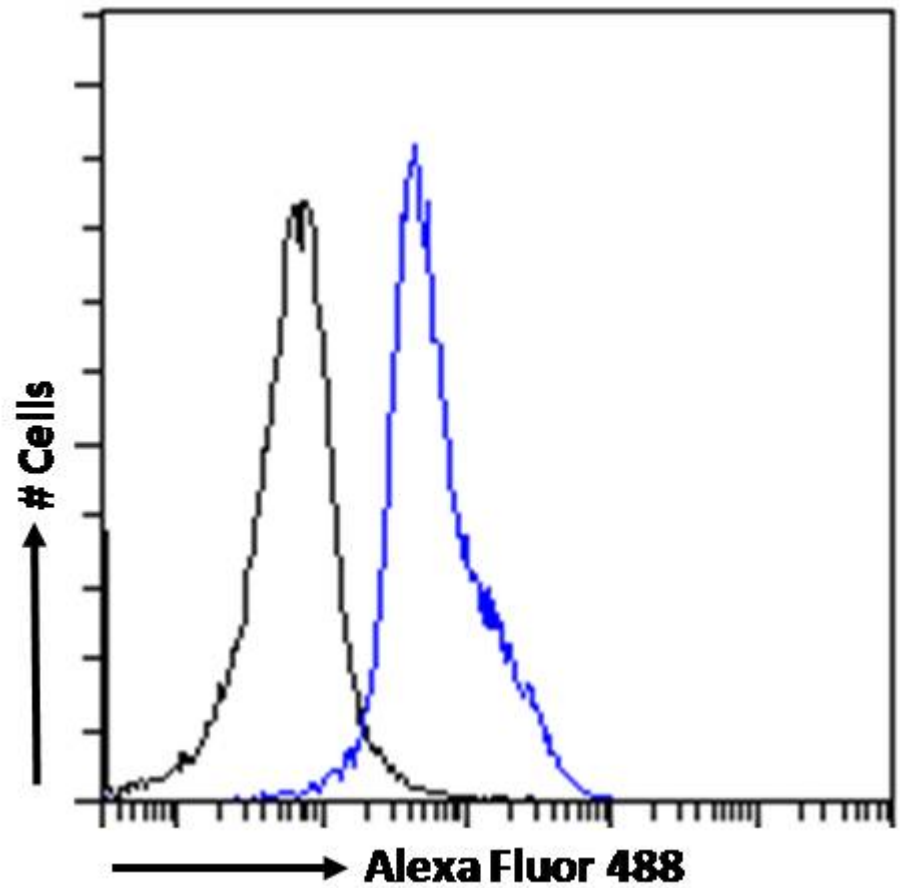
EB07196 Immunofluorescence analysis of paraformaldehyde fixed Jurkat cells, permeabilized with 0.15% Triton.

Primary incubation 1hr (10ug/ml) followed by Alexa Fluor 488 secondary antibody (2ug/ml), showing nuclear staining. Actin filaments were stained with phalloidin (red) and the nuclear stain is DAPI (blue). Negative control: Unimmunized goat IgG (10ug/ml) followed by Alexa Fluor 488 secondary antibody (2ug/ml).



EB07196 Immunofluorescence analysis of paraformaldehyde fixed U2OS cells, permeabilized with 0.15% Triton.

Primary incubation 1hr (10ug/ml) followed by Alexa Fluor 488 secondary antibody (2ug/ml), showing nuclear staining. Actin filaments were stained with phalloidin (red) and the nuclear stain is DAPI (blue). Negative control: Unimmunized goat IgG (10ug/ml) followed by Alexa Fluor 488 secondary antibody (2ug/ml).



EB07196 Flow cytometric analysis of paraformaldehyde fixed Jurkat cells (blue line), permeabilized with 0.5% Triton. Primary incubation 1hr (10ug/ml) followed by Alexa Fluor 488 secondary antibody (1ug/ml). IgG control: Unimmunized goat IgG (black line) followed by Alexa Fluor 488 secondary antibody.